

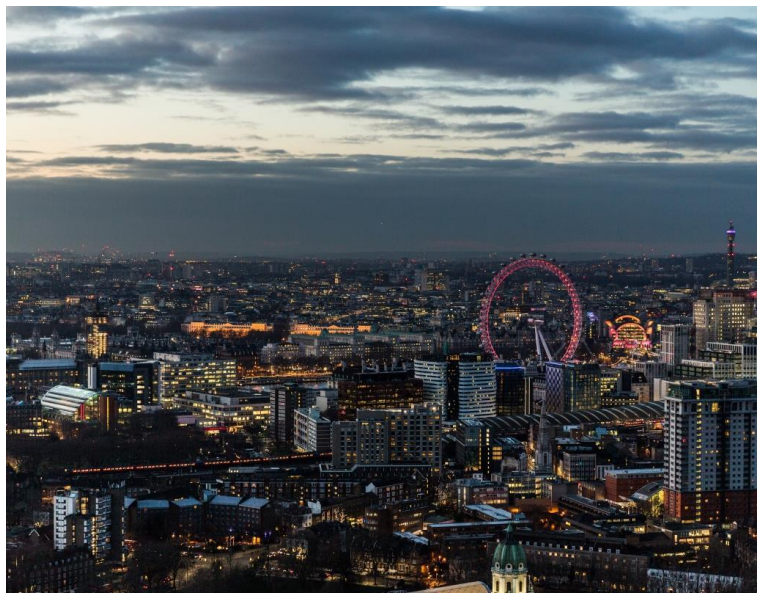
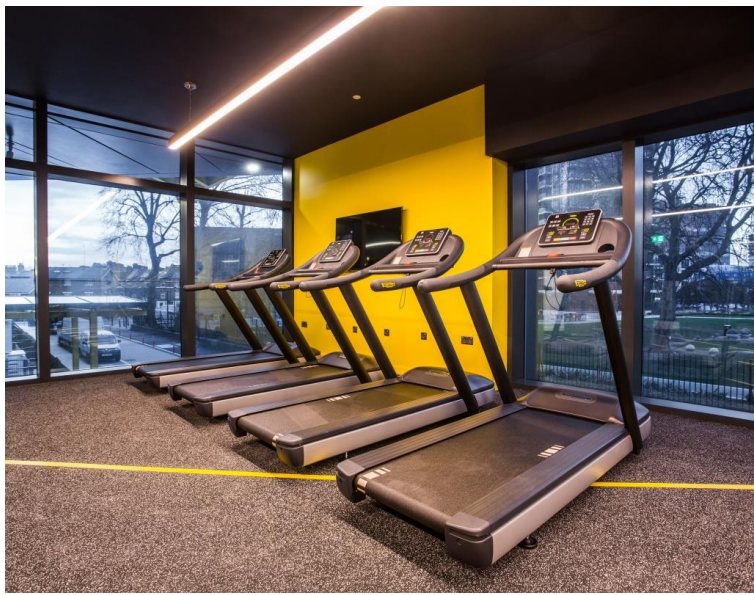


Churchyard Row, London SE11

Price £3,250 per month - Furnished







Description

UNCLE is in one of the tallest high-rise buildings in London. This spacious one-bedroom apartment is furnished to an exceptional standard with furniture from Made.com. The apartment has an open plan design and is finished to a high specification throughout, benefitting from a stylish kitchen with integrated Siemens appliances, spacious living and dining area leading to a large private balcony, contemporary bathroom, bedroom designed with built in wardrobes and wood floor throughout.

Residents have access to a range of amenities, including a 24 hour residents' gym and a 45th floor sky lounge with panoramic views and with access to high speed fibre broadband up to 1GB. UNCLE has a 24/7 on site team to whom are dedicated to bringing high-quality homes and renting as it should be. UNCLE believes you shouldn't have to own a home to be treated like a home owner.

UNCLE is well situated for the City and central London and just 2 minutes' walk from Elephant & Castle station, providing access to the Northern line, Bakerloo line and Thameslink.

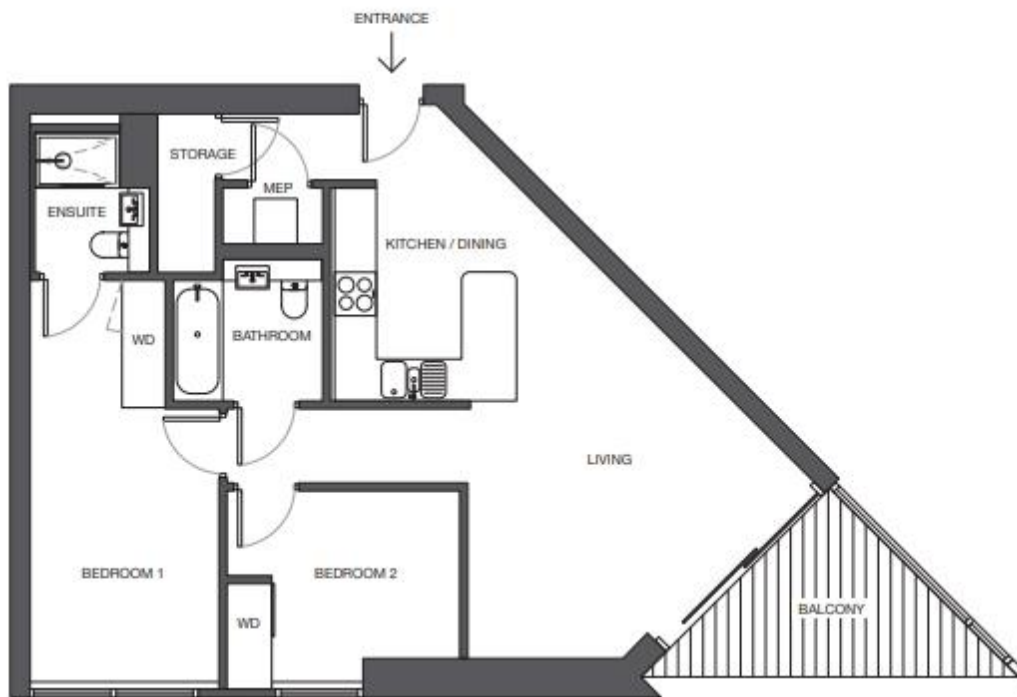
Rent is payable on a monthly basis and you may be required to pay more than a month's rent in advance, depending on your ci

- 24/7 on-site UNCLE team
- 45th floor sky lounge with exceptional views
- Residents lounge, work space, bar & kitchen areas
- Residents gym
- High Speed Fibre Broadband up to 1GB in communal areas
- Secure bike storage available
- 0.2 Elephant & Castle station
- Parking available at additional cost
- EPC: B
- Council tax: Band E

Floorplan

71 sq ft | 7 sq m

UNCLE ELEPHANT & CASTLE STANDARD 2 BED



AVERAGE SIZE: 70m²

MEP - Meter cupboard
WD - Wardrobe

*Floorplan is for illustrative purposes only and is not to scale.
Dimensions of actual unit may vary slightly.

UNCLE

City
25 Walbrook The Walbrook
Building,
London EC4N 8AF
+4420 7337 4000

Urban living, your way.

jll.co.uk/residential

© 2019 Jones Lang LaSalle IP, Inc. All rights reserved. All information contained herein is from sources deemed reliable; however, no representation or warranty is made to the accuracy thereof.

