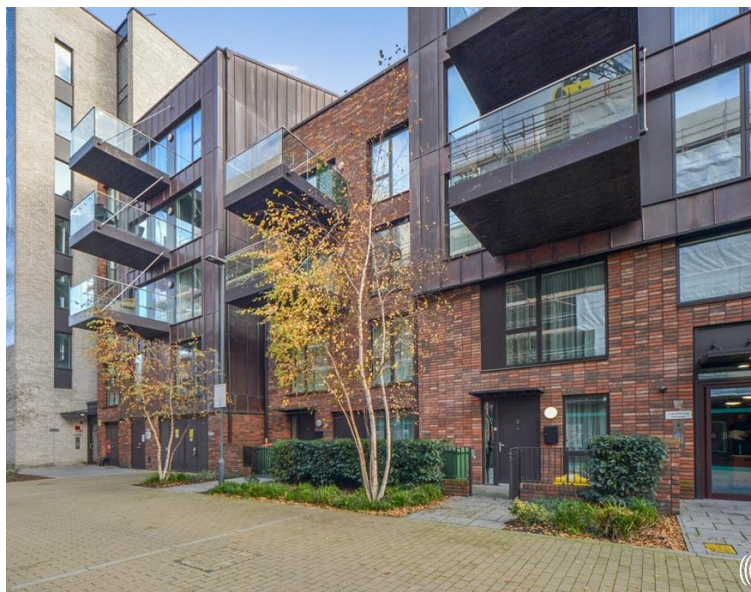
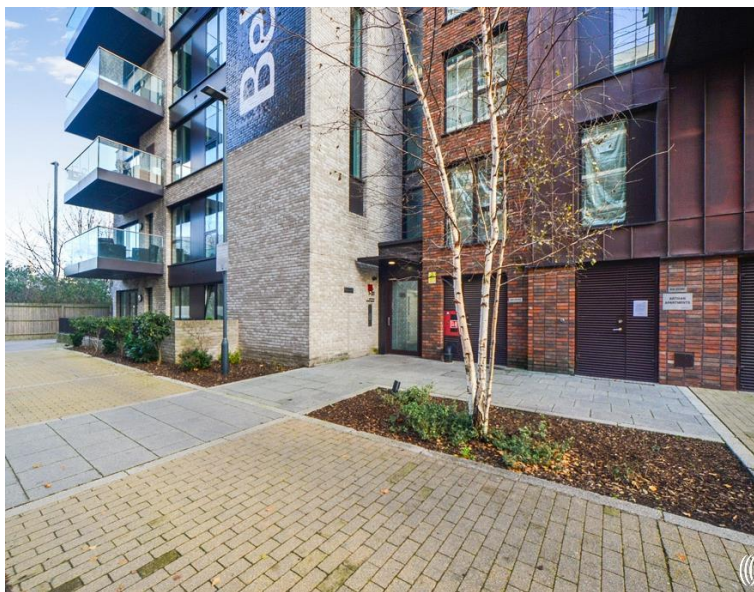


Montford Place, London E15

Asking price £375,000 Leasehold







Description

This exceptional one double bedroom apartment is located on the third floor within the Legacy Wharf development, where residents enjoy facilities such as gymnasium, concierge service, communal gardens and roof terrace.

This modern and well proportioned apartment comprises entrance hall with larger than average storage cupboard, tiled bathroom suite, large double bedroom with built-in storage, ultra modern and fully integrated kitchen and spacious living area leading to a private balcony, large enough for a table and chairs. Residents at Artisan Apartments within the Legacy Wharf development enjoy exclusive access to a range of amenities. These include a residents-only gym for those seeking an active lifestyle, secure bike storage facilities, a delightful communal garden perfect for relaxation, and a roof terrace providing picturesque views. Additionally, a daytime concierge service is available to address any needs or queries.

One of the biggest highlights of Legacy Wharf is its convenient location, being a mere 0.3 mile walk to Pudding Mill Lane DLR Station. You are also a short walk to both Stratford and Stratford International stations which has connections from TFL, Crossrail and National Rail including: St. Pancras International & Kings Cross and Stratford International DLR.

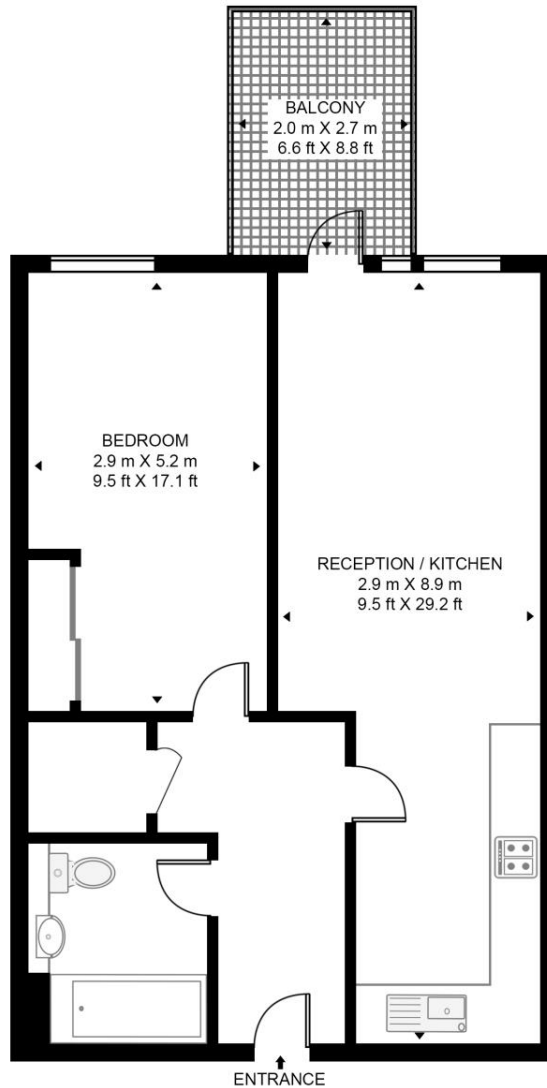
- One bedroom apartment
- Large Balcony
- Third floor with lift
- Residential Gym
- Concierge
- Balcony
- 0.3 miles from Pudding Mill Lane DLR
- Approx 565 sq ft (52.5 sq m)
- EPC: B

Floorplan

565 sq ft | 53 sq m

ARTISAN APARTMENTS

APPROXIMATE GROSS INTERNAL FLOOR AREA 565 SQ.FT (52.5 SQ.M)



THIRD FLOOR



This floor plan has been defined by the RICS Code of Measurement. This floor plan and all others are for approximate representative purposes only and upon usage is agreed to as such by the client.
WWW: hdvirtualart.com | TEL: 0203.974.1567 | EMAIL: info@hdvirtualart.com

Stratford
5 Station Street,
London E15 1DA
+4420 3147 1500
Lettingsstratford@eu.jll.com

Urban living, your way.

jll.co.uk/residential

© 2019 Jones Lang LaSalle IP, Inc. All rights reserved. All information contained herein is from sources deemed reliable; however, no representation or warranty is made to the accuracy thereof.

