

Avantgarde Place, London E1

Price £785 per week - Furnished







Description

A modern 2 bedroom apartment in the sought after Avantgarde Tower, located in the heart of Shoreditch.

This luxury 2 bedroom apartment is situated on the 9th floor and offers 2 double bedrooms with fitted wardrobes, two contemporary Roca bathrooms with en-suite to master bedroom, reception leading to balcony with stunning South Eastern views of the City skyline and towards Canary Wharf, fully fitted kitchen with Siemens appliances and wood flooring.

This luxury development has a high specification to include comfort cooling, resident's lounge, on site leisure facilities and 24 hour concierge. Based in the stylish hub of Shoreditch, the development is located in Zone 1, with local transport links such as Shoreditch High Street, Old Street, Hoxton and Aldgate.

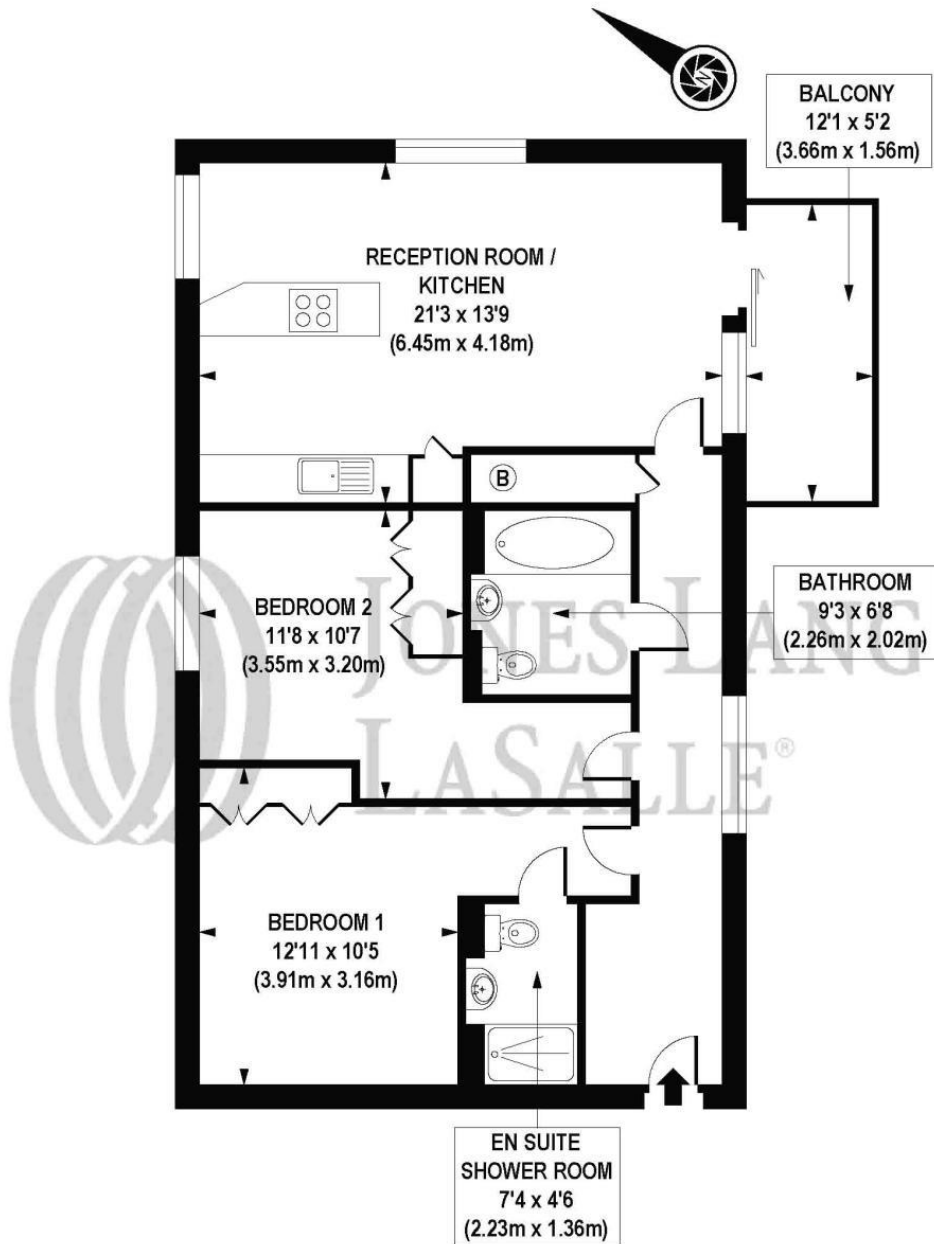
We understand that cooling / heating is delivered via a communal system for which separate charges apply.

As well as paying the rent, you may also be required to make some additional permitted payments. If your tenancy does not qualify as an AST, additional fees may apply. Please visit jll.co.uk/fees for details of fees which may be payable when ren

- 2 Bedrooms
- 2 Bathrooms
- Approx. 789 sq ft (73.31 sq m)
- Fully furnished
- Balcony
- 24 hour concierge
- Close to Shoreditch High Street overground station
- EPC: B
- Council Tax Band: D

Floorplan

789 sq ft | 73 sq m



ELEVENTH FLOOR

APPROX. GROSS INTERNAL FLOOR AREA 789 sq. ft / 73.31 sq. m

Floorplan is for illustrative purposes only and is not to scale. Every attempt has been made to ensure the accuracy of the floorplan shown, however all measurements, fixtures, fittings and data shown are an approximate interpretation for illustrative purposes only. Liability for errors, omissions or mis-statement through negligence or otherwise is hereby excluded.

CPICREATIVE
Property Marketing

City
25 Walbrook The Walbrook
Building,
London EC4N 8AF
+4420 7337 4000

Urban living, your way.

jll.co.uk/residential

© 2019 Jones Lang LaSalle IP, Inc. All rights reserved. All information contained herein is from sources deemed reliable; however, no representation or warranty is made to the accuracy thereof.

