



## Hanover Square, London W1S

Price £2,746 per week - Unfurnished







# Description

A spectacular two bedroom apartment on the 7th floor of the iconic new development The Residences at Mandarin Oriental, Mayfair.

Residents enjoy privileged access to the full suite of hotel services and amenities, including an opulent spa with sauna and steam rooms, 25m pool and state of the art gym. Residents can also use the hotel's bar, fine dining restaurant, Akira Back Restaurant, and roof terrace, while hotel services extend beyond the hotel rooms, with valet parking, in-residence dining and housekeeping available to all apartments. A dedicated residential concierge is on hand 24 hours a day to handle every request down to the smallest details, with residents also benefitting from access to Mandarin Oriental's exclusive Residences Elite Program, which includes VIP benefits at any Mandarin Oriental hotel, anywhere in the world.

The Mandarin Oriental Mayfair is located in Hanover Square, a short walk from New Bond Street and Regent Street. The garden square is well-served by public transportation, with Oxford Circus Underground Station (0.2 miles) and Bond Street Underground Station (0.2 miles) within a short walking distance, providing easy access to the rest of London.

Rent is payable on a monthly basis and you may be required to pay more than a month's rent in advance, depending on your circumstances. You will be required to pay a 1 week holding deposit following a successful offer. Utility bills, council tax, telephone line and broadband are not included in the rent. As well as paying the rent, you may also be required to make some additional permitted payments. If your tenancy does not qualify as an AST, additional fees may apply. Please visit [jll.co.uk/fees](http://jll.co.uk/fees) for details of fees which may be payable when renting a property.

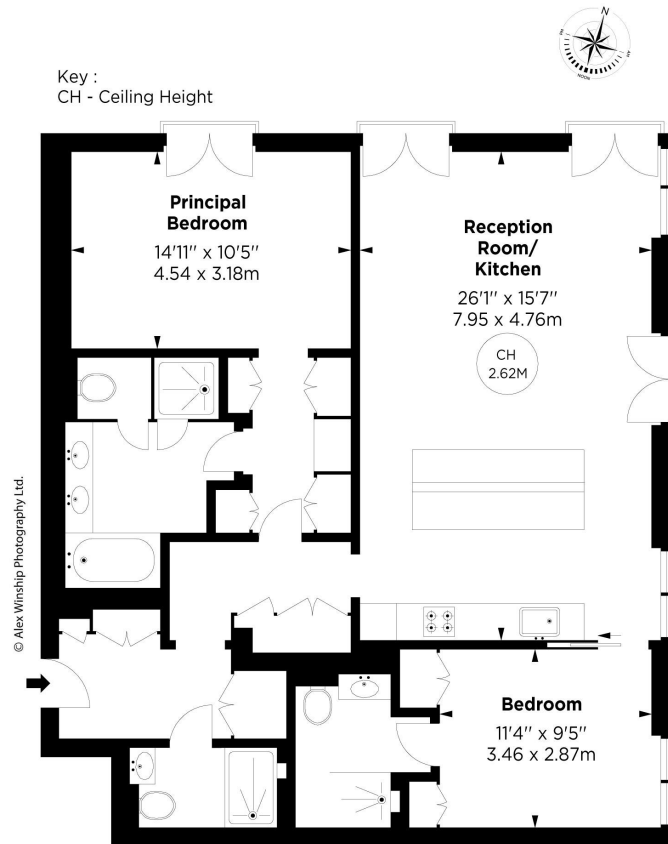
- Brand New Two Bedroom Apartment
- Luxury Development
- 5-Star Hotel Service
- 24 Hour Concierge
- 25m Heated Pool
- Gym
- Opulent Spa
- Sauna & Steam Room
- Heart of Mayfair
- Council tax: Band G



## Mandarin Oriental Mayfair, W1

APPROX. GROSS INTERNAL AREA \*  
1126 Sq Ft - 104.61 Sq M

This floorplan is for GUIDANCE ONLY and NOT FOR VALUATION purposes.



SEVENTH FLOOR



Mayfair and Marylebone  
St George Street,  
London W1S 2FQ  
+44 207 399 5550  
mayfair@jll.com

*Urban living, your way.*

[jll.co.uk/residential](http://jll.co.uk/residential)

© 2019 Jones Lang LaSalle IP, Inc. All rights reserved. All information contained herein is from sources deemed reliable; however, no representation or warranty is made to the accuracy thereof.

