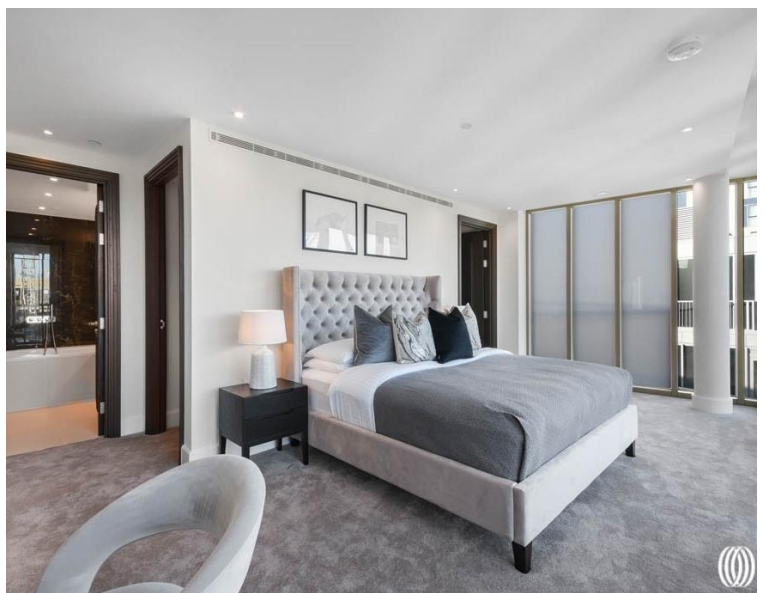
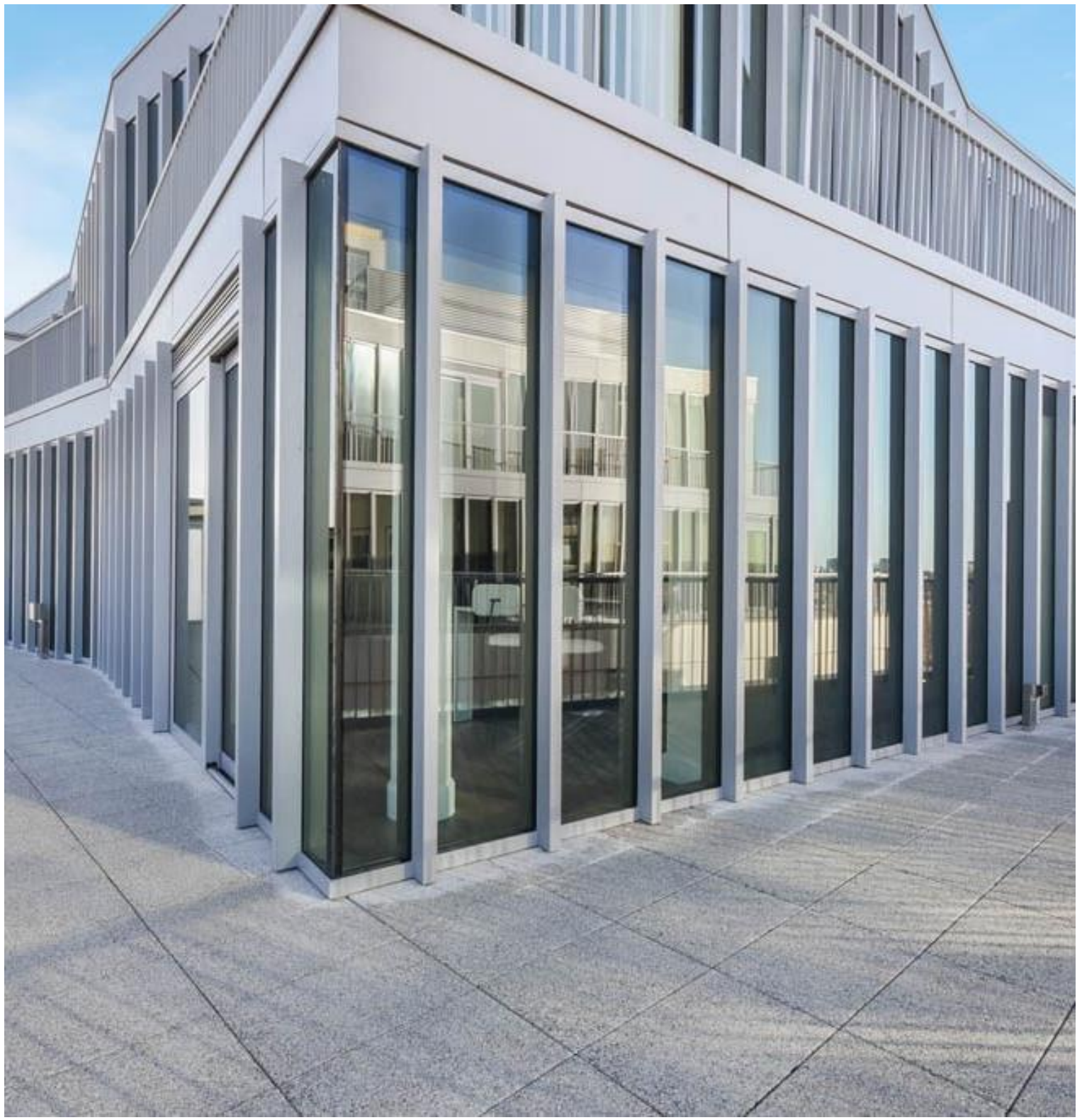


## Warwick Lane, London W14

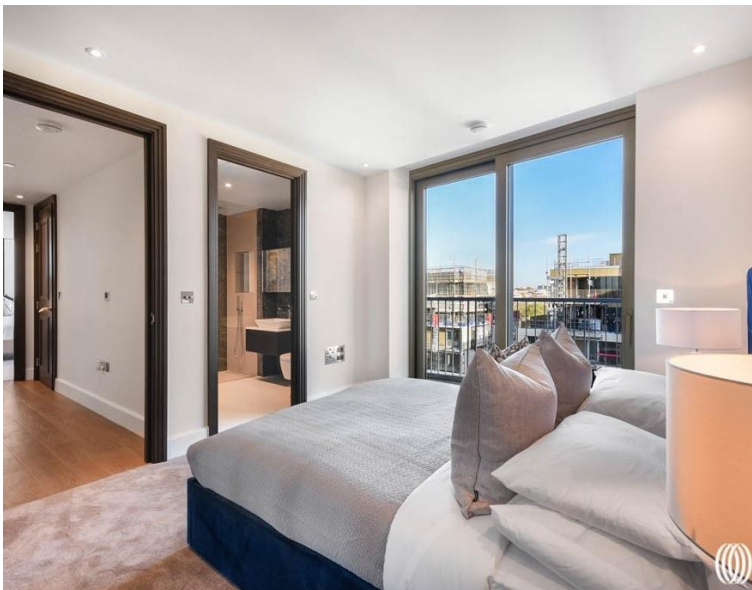
Price £9,850 per month - Furnished











## Description

A brand-new luxury two-bedroom duplex penthouse apartment to let with balcony in a secure development in Kensington. This property is set on the ninth and tenth floor of the newest building in Royal Warwick Square, the latest phase of 375 Kensington High Street. The property comprises a large en-suite master bedroom with two walk in wardrobes, second spacious double bedroom with en-suite bathroom, guest WC, large bright open plan kitchen and living room leading to the private balcony. Residents benefit from secure living with 24-hour concierge and also get the added benefit of luxury facilities which will be opening soon, these include a gym, swimming pool and spa. The apartment is offered on a furnished basis and is available for immediate occupancy. Royal Warwick Square is located very close to Kensington High Street with easy access into Central London and also a direct route to Heathrow airport.

Rent is payable on a monthly basis and you may be required to pay more than a month's rent in advance, depending on your circumstances. You will be required to pay a 1 week holding deposit following a successful offer. Utility bills, council tax, telephone line and broadband are not included in the rent. As well as paying the rent, you may also be required to make some additional permitted payments. If your tenancy does not q

- 2 Bedrooms
- 2 Bathrooms
- Guest WC
- Private balcony
- 24 Hour concierge
- Resident facilities
- Approx 1791 sq ft (166 sq m)
- Furnished
- EPC: B
- Council tax: Band H

# Floorplan

1,786 sq ft | 166 sq m



Kensington  
387 Kensington High Street,  
London W14 8QA  
+4420 7087 5696  
[lettingskensington@eu.jll.com](mailto:lettingskensington@eu.jll.com)

*Urban living, your way.*

[jll.co.uk/residential](http://jll.co.uk/residential)

© 2019 Jones Lang LaSalle IP, Inc. All rights reserved. All information contained herein is from sources deemed reliable; however, no representation or warranty is made to the accuracy thereof.

