



## Weymouth Street, London W1G

Price £925 per week - Furnished, Unfurnished





# Description

A lovely two bedroom, second floor (no lift) apartment, located conveniently on Marylebone High Street offering a lovely bright and spacious living space. This property comprises; a very good sized reception area, fitted kitchen, a large master bedroom, a second smaller double bedroom and a family bathroom.

Having your property professionally managed by The Howard de Walden Estate not only offers exceptional levels of service and high quality, professional property management. Marylebone Village is one of central London's most distinctive and characterful shopping destinations, home to a high proportion of small, independent businesses. Residents of HDWE also benefit from access to an array of discounts within Marylebone Village, resident social opportunities and local events which make Marylebone Village a unique and vibrant place to call home.

Rent is payable on a monthly basis and you may be required to pay more than a month's rent in advance, depending on your circumstances. You will be required to pay a 1 week holding deposit following a successful offer. Utility bills, council tax, telephone line and broadband are not included in the rent. As well as paying the rent, you may also be required to make some additional permitted payments. If your tenancy does not qualify as an AST, additional fees may apply. Please visit [jll.co.uk/fees](http://jll.co.uk/fees) for details of fees which may be payable when renting a property.

- Two double bedrooms
- One bathroom
- One reception
- Professional property management
- Eligibility for local discounts in Marylebone Village
- Second floor
- Approx: 857 sq ft (79 sq m)
- EPC: C
- Council tax: Band G

- Deposit amount:£4,625 (estimate) and an initial holding deposit of 1 week's rent is payable to rese

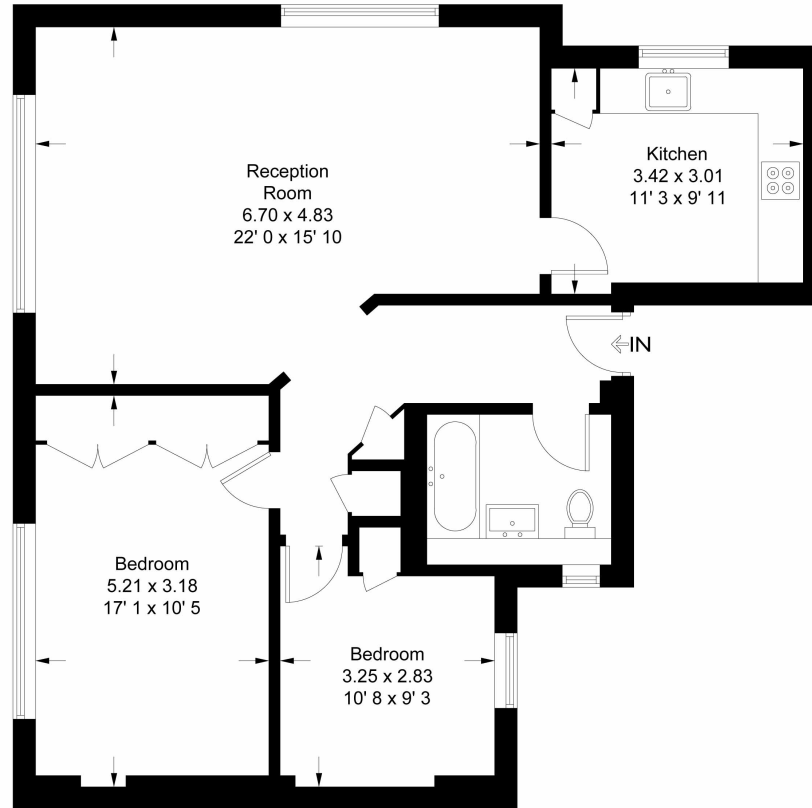


# Floorplan

857 sq ft | 80 sq m

## Weymouth Street

Approximate Gross Internal Area = 857 sq ft / 79.6 sq m



**Second Floor**

This plan is not to scale and must be used as layout guidance only. All measurements and areas are approximate and should not be relied upon to provide accurate information. This plan must not be relied upon when making property valuations, design considerations or any other such relevant decisions. We accept no responsibility or liability (whether in contract, tort or otherwise) in relation to any loss whatsoever arising from or in connection with any use of this plan or the adequacy, accuracy or completeness of it or any information within it.

**Mayfair and Marylebone**

St George Street,  
London W1S 2FQ  
+44 207 399 5550  
mayfair@jll.com

*Urban living, your way.*

[jll.co.uk/residential](http://jll.co.uk/residential)

© 2019 Jones Lang LaSalle IP, Inc. All rights reserved. All information contained herein is from sources deemed reliable; however, no representation or warranty is made to the accuracy thereof.

