

Avantgarde Place, London E1

Price £580 per week - Furnished







Description

A stunning 1 bedroom apartment in the sought after Avantgarde.

This 13th floor 1 bedroom apartment offers approximately 509 sq ft of living space and comprises reception and dining area, balcony with stunning South Eastern views of the City Skyline and Canary Wharf, double bedroom with fitted wardrobes, fitted kitchen with Siemens appliances, bathroom, wood veneer flooring and excellent storage.

This luxury development has a high specification to include comfort cooling, resident's lounge, on site leisure facilities and 24 hour concierge. Based in the stylish hub of Shoreditch, the development is located in Zone 1, with local transport links such as Shoreditch High Street, Old Street, Hoxton and Aldgate. Fully furnished.

We understand that cooling / heating is delivered via a communal system for which separate charges apply.

Rent is payable on a monthly basis and you may be required to pay more than a month's rent in advance, depending on your circumstances. You will be required to pay a 1 week holding deposit following a successful offer. Utility bills, council tax, tele

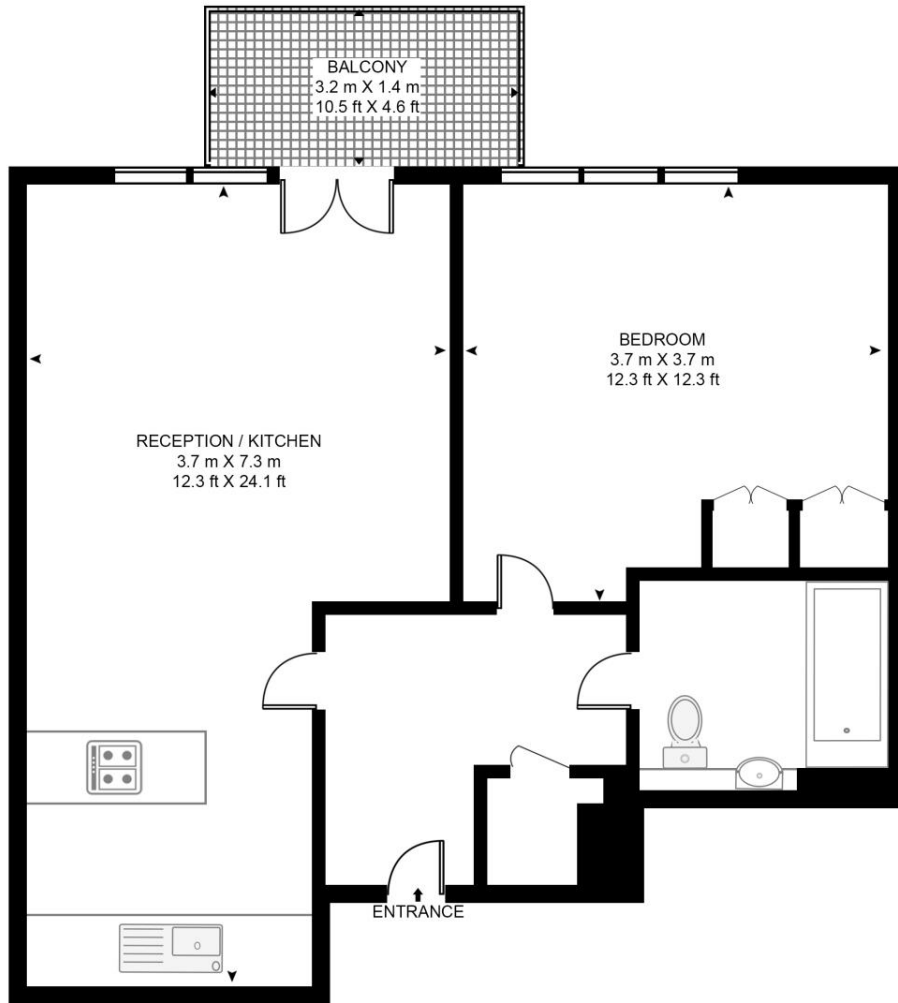
- 1 Bedroom
- 1 Bathroom
- 13th Floor
- Balcony
- Wood flooring
- 24 hour concierge
- 0.1 mile from Shoreditch Station
- Approx. 517 sq ft (48 sq ft)
- Furnished
- EPC: B

Floorplan

517 sq ft | 48 sq m

AVANTGARDE TOWER, AVANTGARDE PLACE

APPROXIMATE GROSS INTERNAL FLOOR AREA 517 SQ.FT (48 SQ.M)



THIRTEENTH FLOOR



This floor plan has been defined by the RICS Code of Measurement. This floor plan and all others are for approximate representative purposes only and upon usage is agreed to as such by the client.
WWW: hdvirtualart.com | TEL: 0203.974.1567 | EMAIL: info@hdvirtualart.com

City
25 Walbrook The Walbrook
Building,
London EC4N 8AF
+4420 7337 4000

Urban living, your way.

jll.co.uk/residential

© 2019 Jones Lang LaSalle IP, Inc. All rights reserved. All information contained herein is from sources deemed reliable; however, no representation or warranty is made to the accuracy thereof.

