



New Drum Street, London E1

Price £640 per week - Furnished







Description

A luxury 1 bedroom apartment in the popular Aldgate Place, on the doorstep of The City.

Situated on the 14th floor, this stunning 1 bedroom apartment is offered fully furnished and offers approximately 591 sq ft of living space. The apartment comprises 1 double bedroom with large fitted wardrobes, reception area with access onto a large winter garden, stunning South facing views towards Tower Bridge, contemporary bathroom with tiled finish, fully fitted kitchen with Siemens appliances and wood effect Amtico flooring.

Aldgate Place is next to Aldgate East station and a short walk (approximately 0.3 miles) from the City of London. The developments benefits from 24 hour concierge and on-site gymnasium.

We understand that cooling / heating is delivered via a communal system for which separate charges apply.

Rent is payable on a monthly basis and you may be required to pay more than a month's rent in advance, depending on your circumstances. You will be required to pay a 1 week holding deposit following a successful offer. Utility bills, council tax, tele

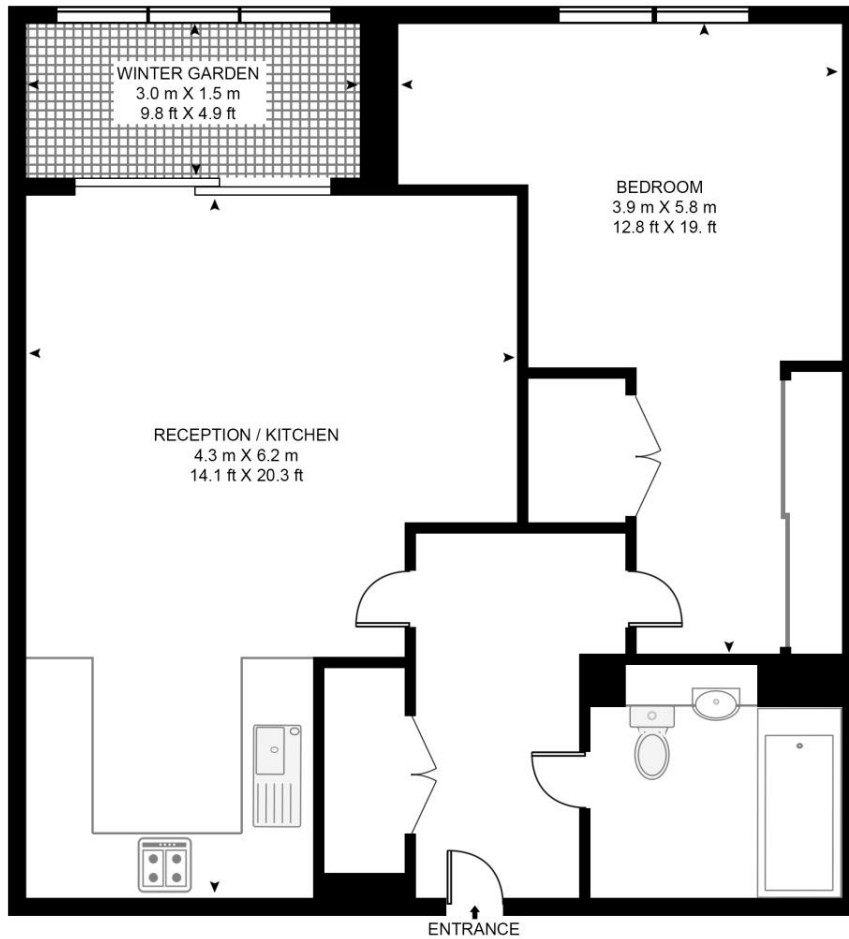
- 1 Bedroom
- 1 Bathroom
- 14th floor
- Large Winter Garden
- 24 hour concierge
- On-site gymnasium
- 0.3 miles from Aldgate Station
- Approx. 605 sq ft (56.2 sq m)
- Furnished
- EPC: B

Floorplan

605 sq ft | 56 sq m

WIVERTON TOWER

APPROXIMATE GROSS INTERNAL FLOOR AREA 605 SQ.FT (56.2 SQ.M)



FOURTEENTH FLOOR



This floor plan has been defined by the RICS Code of Measurement. This floor plan and all others are for approximate representative purposes only and upon usage is agreed to as such by the client.
WWW: hdvirtualart.com | TEL: 0203.974.1567 | EMAIL: info@hdvirtualart.com

City
25 Walbrook The Walbrook
Building,
London EC4N 8AF
+4420 7337 4000

Urban living, your way.

jll.co.uk/residential

© 2019 Jones Lang LaSalle IP, Inc. All rights reserved. All information contained herein is from sources deemed reliable; however, no representation or warranty is made to the accuracy thereof.

