

ENNISMORE  
GARDENS  
KNIGHTSBRIDGE SW7



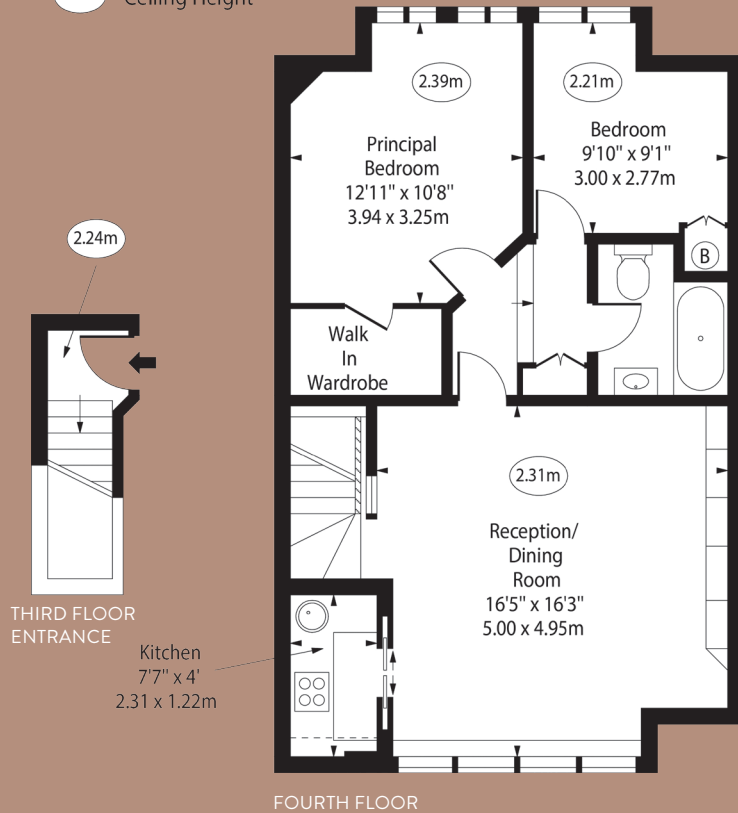


## GROSS INTERNAL AREA (APPROX.)

63.64 sq m (685 sq ft)



○ - Ceiling Height



## FACILITIES

Communal gardens  
Permit Parking

## TERMS

Price - £825,000  
Lease length - 148 years (expires 10/08/2173)  
Service Charge - £2,300 Per annum  
Ground Rent - Peppercorn  
Local Authority - City of Westminster  
Council tax - G  
EPC - G



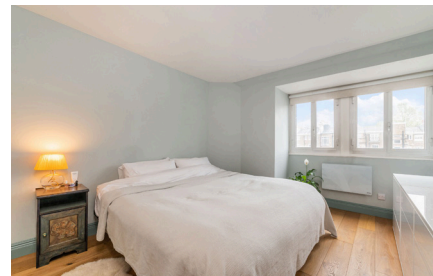
## A TWO BEDROOM TOP FLOOR APARTMENT LOCATED IN THE HEART OF KNIGHTSBRIDGE MOMENTS AWAY FROM HYDE PARK.

The property has a bright west facing reception room, a separate kitchen, a bathroom, wooden floors, access to charming communal gardens and has the added benefits of being sold with no onward chain, on a long lease and the possibility to use some of the loft space as a further room or an abundance of storage.

Ennismore Gardens is located to the south of the 350 acres of open space in Hyde Park. The A4 (M4) offers swift access towards the West, Heathrow Airport and the M25.

The world famous restaurants and boutiques of Knightsbridge, Belgravia and Chelsea are within walking distance along with the renowned Royal Albert Hall, V&A, Natural History Museum, Science Museum and Harrods.

ENNISMORE  
GARDENS  
KNIGHTSBRIDGE SW7



These particulars are for general information only and do not constitute any part of an offer or contract. All statements contained therein are made without responsibility on the part of the vendors or lessors and are not to be relied upon as statement or representation of fact. Intending purchasers or lessees must satisfy themselves, by inspection, or otherwise, as to the correctness of each of the statements or dimensions contained in these particulars.

JLL Chelsea & Knightsbridge  
2 Cale Street  
London, SW3 3QU

020 7306 1610

