



VIRTUALLY STAGED IMAGE



VIRTUALLY STAGED IMAGE

Michael Road, London SW6

Price £950 per week - Unfurnished





VIRTUALLY STAGED IMAGE



Description

This beautiful two-bedroom apartment is one of the biggest two bedroom apartments of this newly launched King's Road Park development. The flat includes two spacious bedrooms, with one en-suite bathroom and one family sized bathroom.

It further comprises of a stunning open plan kitchen and living room with a spacious balcony overlooking the beautiful communal gardens. The development is set within six acres of beautiful landscaping including a public park, square and residents' garden and one of best residents facilities around.

Kings Road Park is within easy reach of Fulham Broadway Underground station (15 minutes to Victoria on the District Line), and Imperial Wharf Overground station, taking you one stop to Clapham Junction south of the river.

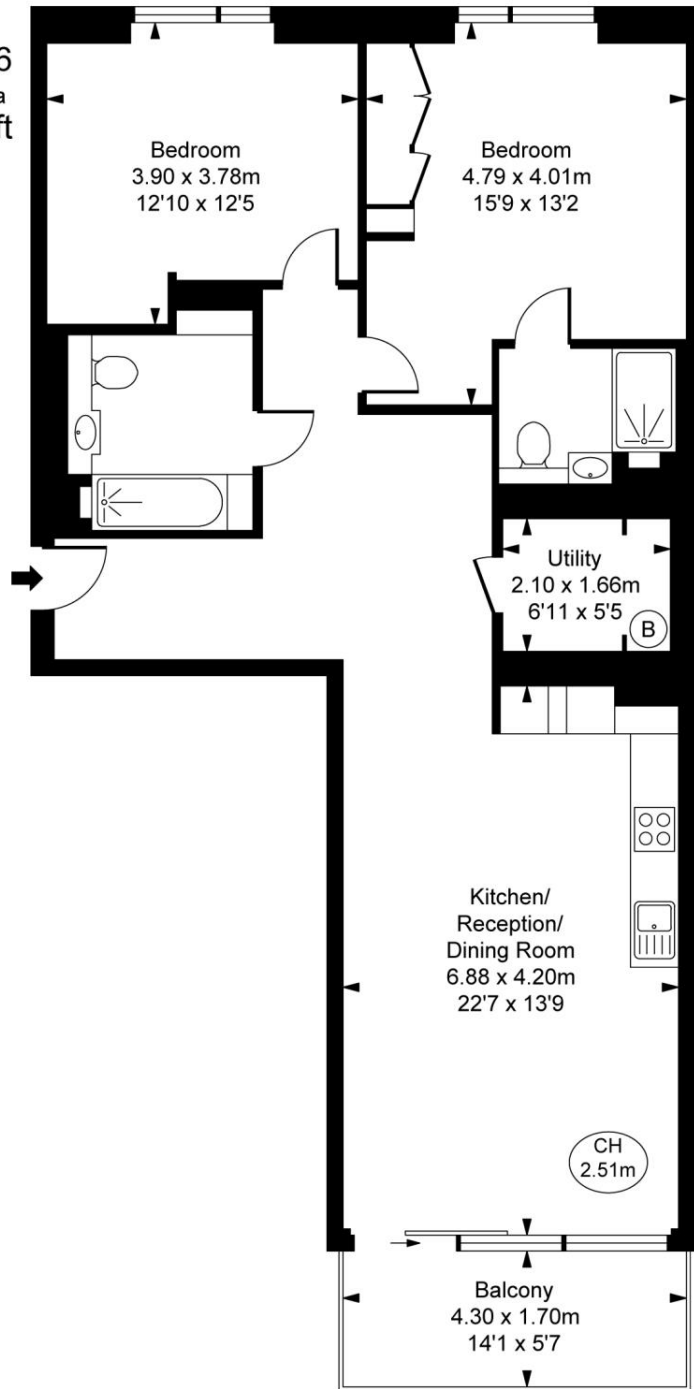
Rent is payable on a monthly basis and you may be required to pay more than a month's rent in advance, depending on your circumstances. You will be required to pay a 1 week holding deposit following a successful offer. Utility bills, council tax, telephone line and broadband are not included in the rent. As well as paying the rent, you may also be required to make some additional permitted payments. If your tenancy does not qualify as an AST, additional fees may apply. Please visit jll.co.

- Two bedrooms
- One reception
- Shower room
- En suite bathroom
- Terrace
- Lift
- Approx. 993 sq ft (92.26 sq m)
- One underground parking space included
- Holding deposit: £950
- Deposit: £4,750

Floorplan

993 sq ft | 92 sq m

Hampton House,
Sands End Lane, SW6
Approximate Gross Internal Area
92.26 sq m / 993 sq ft
(CH = Ceiling Heights)



This plan is not to scale. It is for guidance and not for valuation purposes.
All measurements and areas are approximate only, and have been prepared in accordance with the current edition of the RICS Code of Measuring Practice.
© Fulham Performance

Chelsea
2 Cale Street,
London SW3 3QU
+4420 7399 5010
saleschelsea@jll.com

Urban living, your way.

jll.co.uk/residential

© 2019 Jones Lang LaSalle IP, Inc. All rights reserved. All information contained herein is from sources deemed reliable; however, no representation or warranty is made to the accuracy thereof.

