



Columbia Gardens, London SW6

Asking price £680,000 Leasehold







Description

Beautifully presented apartment in the renowned Lillie Square. Located on the fourth floor (with lift), this property offers a private balcony and a spacious open-plan kitchen/living area. The sleek, modern kitchen is fitted with high-end integrated appliances. The apartment also includes a large bedroom, a separate wardrobe area, and a contemporary bathroom.

Lillie Square elevates the living experience with its array of premium amenities, including a top-tier concierge service, an exclusive residents' club complete with a swimming pool and sauna, cinema and round-the-clock security, ensuring a lifestyle of comfort and convenience.

Years remaining on lease: 991, Service charge: TBC, Ground rent: TBC, Council tax band E

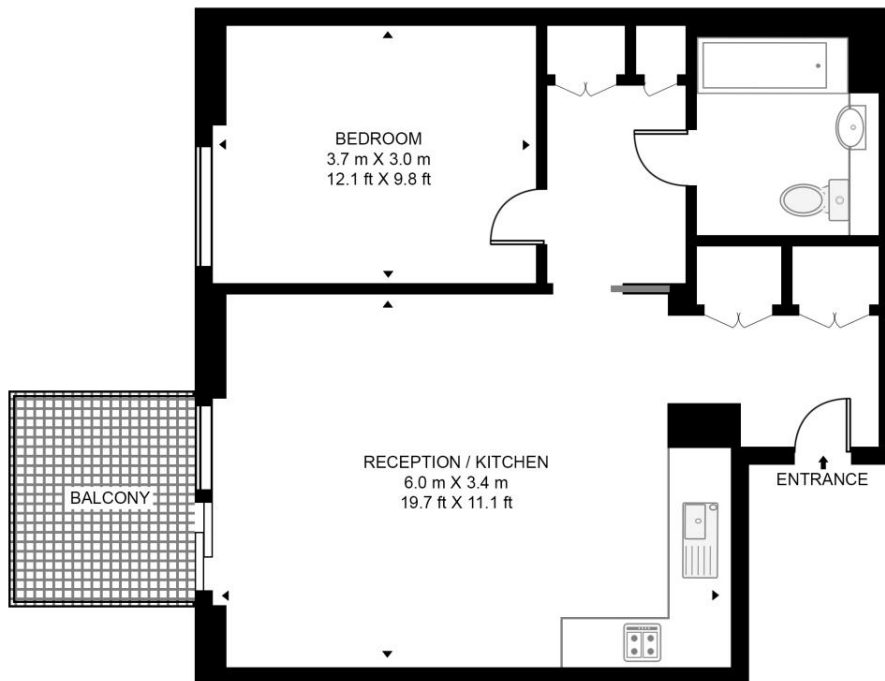
- One bedroom apartment
- One bathroom
- Fourth floor with lift access
- Private Balcony
- Concierge
- Residents' pool & sauna
- Approx. 563 sq. ft (52.3 sq.m)
- EPC Rating B

Floorplan

563 sq ft | 52 sq m

LILLIE SQUARE, 1 COLUMBIA GARDENS

APPROXIMATE GROSS INTERNAL FLOOR AREA 563 SQ.FT (52.3 SQ.M)



FOURTH FLOOR



This floor plan has been defined by the RICS Code of Measurement. This floor plan and all others are for approximate representative purposes only and upon usage is agreed to as such by the client.
WWW: hdvirtualart.com | TEL: 0203.974.1567 | EMAIL: info@hdvirtualart.com

Kensington
387 Kensington High Street,
London W14 8QA
+4420 7087 5696
lettingskensington@eu.jll.com

Urban living, your way.

jll.co.uk/residential

© 2019 Jones Lang LaSalle IP, Inc. All rights reserved. All information contained herein is from sources deemed reliable; however, no representation or warranty is made to the accuracy thereof.

