



## 3 Brill Street, London NW1

Price £4,500 per month - Furnished









# Description

The apartment is finished to a high standard and comprises an open plan living space, with a stylish and fully integrated kitchen, living area with floor to ceiling windows, a spacious principal bedroom with fitted wardrobes and a modern en-suite bathroom, a second double bedroom and a family bathroom suite with bath and overhead rainfall shower. Each apartment has a private balcony, and the apartment is offered furnished.

Grand Central Apartments, a new residential tower just a short walk to Kings Cross with secure entry, concierge service, lift access and bicycle storage.

Rent is payable on a monthly basis, and you may be required to pay more than a month's rent in advance, depending on your circumstances. You will be required to pay a 1 week holding deposit following a successful offer. Utility bills, council tax, telephone line and broadband are not included in the rent. As well as paying the rent, you may also be required to make some additional permitted payments. If your tenancy does not qualify as an AST, additional fees may apply. Please visit [jll.co.uk/fees](http://jll.co.uk/fees) for details of fees which may be payable when renting a property.

- Brand New
- 3rd Floor
- Private Balcony
- Concierge Service
- Open-Plan Living
- Wooden Flooring
- Furnished
- Floor to Ceiling Windows
- Close to Kings Cross / St. Pancras Stations
- Council tax: Band F



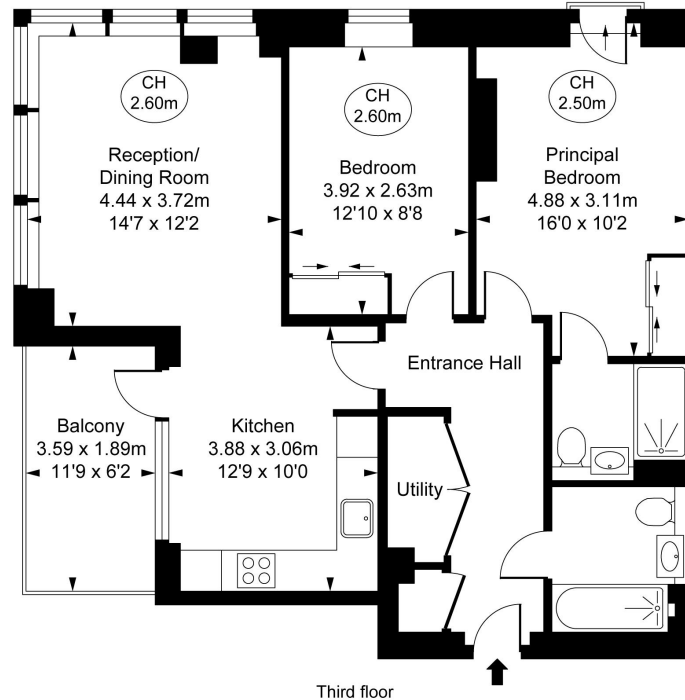
# Floorplan

783 sq ft | 73 sq m

## Grand Central Apartments, NW1

Approximate Gross Internal Area  
72.71 sq m / 783 sq ft

( CH = Ceiling Heights )



This plan is not to scale. It is for guidance and not for valuation purposes.  
All measurements and areas are approximate only, and have been prepared in accordance with the current edition of the RICS Code of Measuring Practice.  
© Fulham Performance

Mayfair and Marylebone  
St George Street,  
London W1S 2FQ  
+44 207 399 5550  
mayfair@jll.com

*Urban living, your way.*

[jll.co.uk/residential](http://jll.co.uk/residential)

© 2019 Jones Lang LaSalle IP, Inc. All rights reserved. All information contained herein is from sources deemed reliable; however, no representation or warranty is made to the accuracy thereof.

