

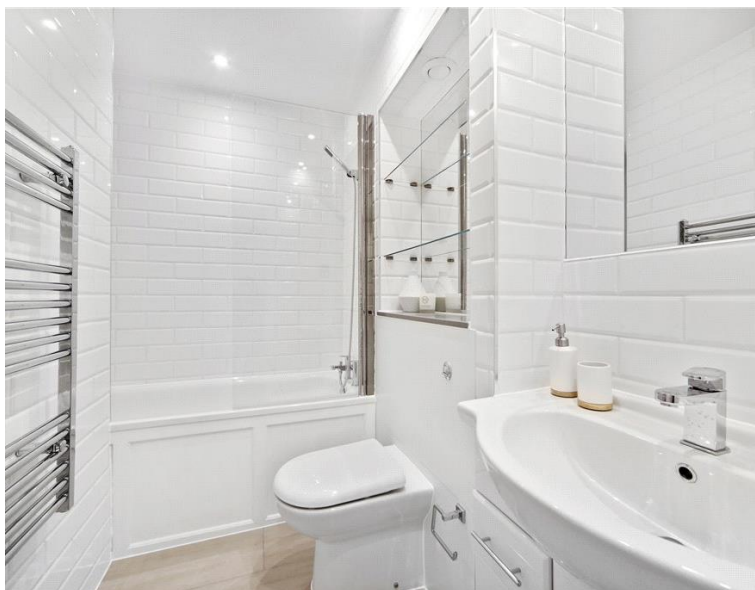


Elvaston Place, London SW7

Price £895 per week - Furnished







Description

A newly refurbished second floor flat (with lift) in this period building in Elvaston Place. The property consists of master bedroom with en suite shower room, second double bedroom, one bathroom, reception room and a fully fitted kitchen. The flat is light and bright and it is available on a furnished basis. Elvaston Place is ideally located for Gloucester Road and South Kensington, with their many shops & restaurants and it is within easy walking distance of Gloucester Road station.

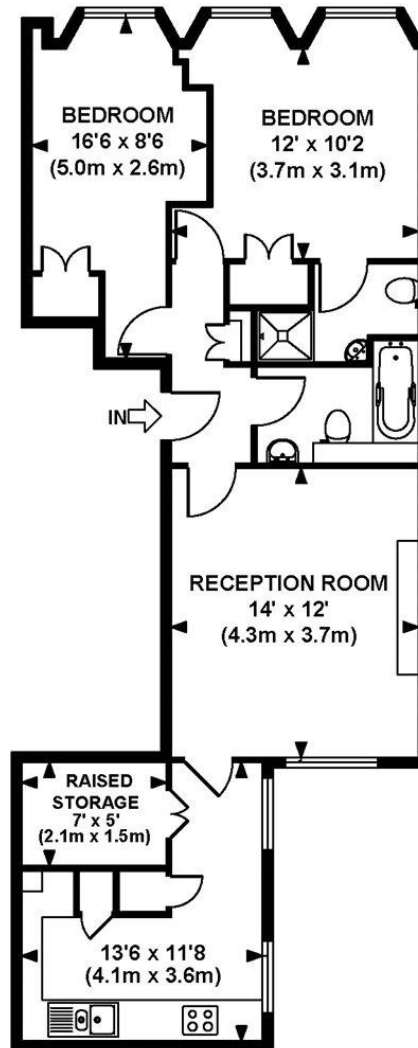
Rent is payable on a monthly basis and you may be required to pay more than a month's rent in advance, depending on your circumstances. You will be required to pay a 1 week holding deposit following a successful offer. Utility bills, council tax, telephone line and broadband are not included in the rent. As well as paying the rent, you may also be required to make some additional permitted payments. If your tenancy does not qualify as an AST, additional fees may apply. Please visit jll.co.uk/fees for details of fees which may be payable when renting a property.

- Furnished flat
- 2 Double bedrooms
- 1 Bathroom
- 1 Shower room (en suite)
- Reception room
- Fully fitted kitchen
- Second floor
- Lift
- EPC: D
- Council Tax: Band F

Floorplan

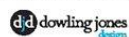
645 sq ft | 60 sq m

Approx. gross internal area
645 Sq Ft. / 60 Sq M.



SECOND FLOOR

Every attempt has been made to ensure the accuracy of this floorplan however, measurements are approximate and for illustration purposes only. Not to scale.
Photography, floorplan and brochure design by Dowling Jones Design www.dowlingjonesdesign.com 020 7386 1014 / 07793 974 209



Chelsea
2 Cale Street,
London SW3 3QU
+4420 7399 5010
saleschelsea@jll.com

Urban living, your way.

jll.co.uk/residential

© 2019 Jones Lang LaSalle IP, Inc. All rights reserved. All information contained herein is from sources deemed reliable; however, no representation or warranty is made to the accuracy thereof.

