



Kings Road, London SW3

Price £4,000 per month - Furnished







Description

A stunning flat in this recently refurbished building ideally located for the many amenities of King's Road and within easy walking distance of Sloane Square underground station.

The flat comprises a reception room with American oak wooden floors, master bedroom with en suite bathroom, second double bedroom with en suite shower room, guest cloakroom and a fully fitted, open plan kitchen. The flat is furnished in a contemporary style and there is also use of the communal gardens for the residents of this wonderful building. Further benefits include air conditioning and underfloor heating to the bathrooms.

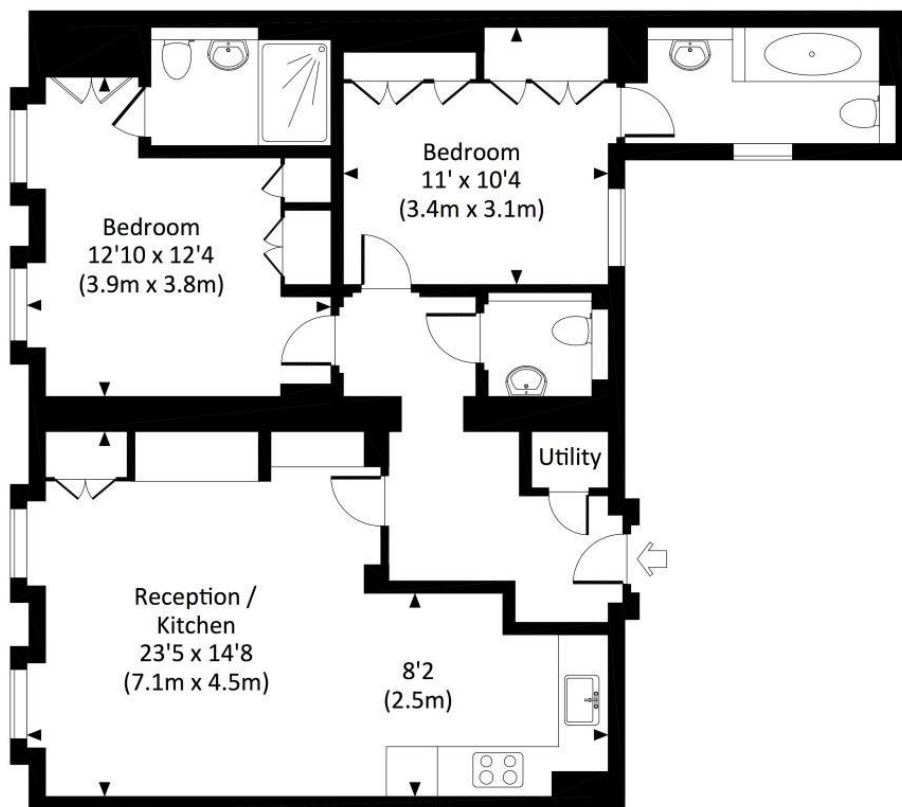
Rent is payable on a monthly basis and you may be required to pay more than a month's rent in advance, depending on your circumstances. You will be required to pay a 1 week holding deposit following a successful offer. Utility bills, council tax, telephone line and broadband are not included in the rent. As well as paying the rent, you may also be required to make some additional permitted payments. If your tenancy does not qualify as an AST, additional fees may apply. Please visit jll.co.uk/fees for details of fees which may be payable when renting a property.

- 2 Double bedrooms
- 1 Bathroom (en suite)
- 1 Shower room (en suite)
- Guest cloakroom
- Reception room
- Open plan kitchen
- First floor
- Shared garden & terrace
- Approx. 767 sq ft (71 sq m)
- Furnished

Floorplan

767 sq ft | 71 sq m

Approx. gross internal area
767 Sq.Ft. / 71.3 Sq.M.



FIRST FLOOR

 All measurements are approximate and for illustration purposes only as defined by the RICS Code of Measuring Practice © 2014 Dowling Jones Design www.dowlingjones.com 020 7610 9933

Chelsea
2 Cale Street,
London SW3 3QU
+4420 7399 5010
saleschelsea@jll.com

Urban living, your way.

jll.co.uk/residential

© 2019 Jones Lang LaSalle IP, Inc. All rights reserved. All information contained herein is from sources deemed reliable; however, no representation or warranty is made to the accuracy thereof.

