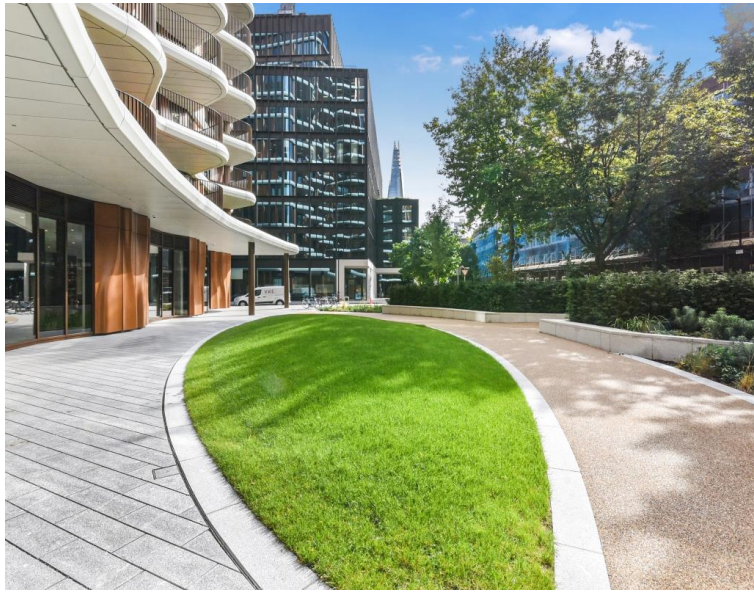
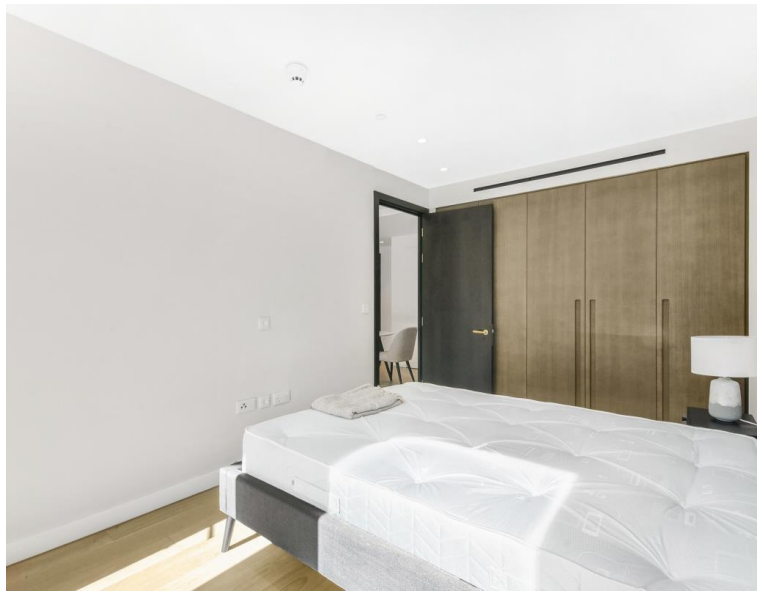


Triptych Bankside, London SE1

Price £785 per week - Furnished







Description

A truly stunning 1 bedroom apartment in this luxury development, Triptych Bankside moments from Southbank. The development benefits from the bespoke service of the 24 hour concierge, landscaped gardens, cinema and games rooms as well as a private lounge and workspace area

Offered fully furnished, this luxury 1 bedroom apartment is situated on the 1st floor and comprises 552 Sq ft of space. With a large double bedroom with fully fitted wardrobes, spacious living area with floor to ceiling glazing maximising natural light, fully fitted open plan kitchen to include Miele appliances, contemporary bathroom, wood flooring and excellent storage space. The property has a high specification throughout featuring comfort cooling, underfloor heating and smart home technology.

The development benefits from top of the range amenities which include exclusive resident's lounge and 24-hour concierge. Triptych Bankside is in the heart of Southbank and on the doorstep of Southwark Station (0.5 miles) and moments from the iconic Tate Modern. The City of London is within easy reach as is London's famous West End.

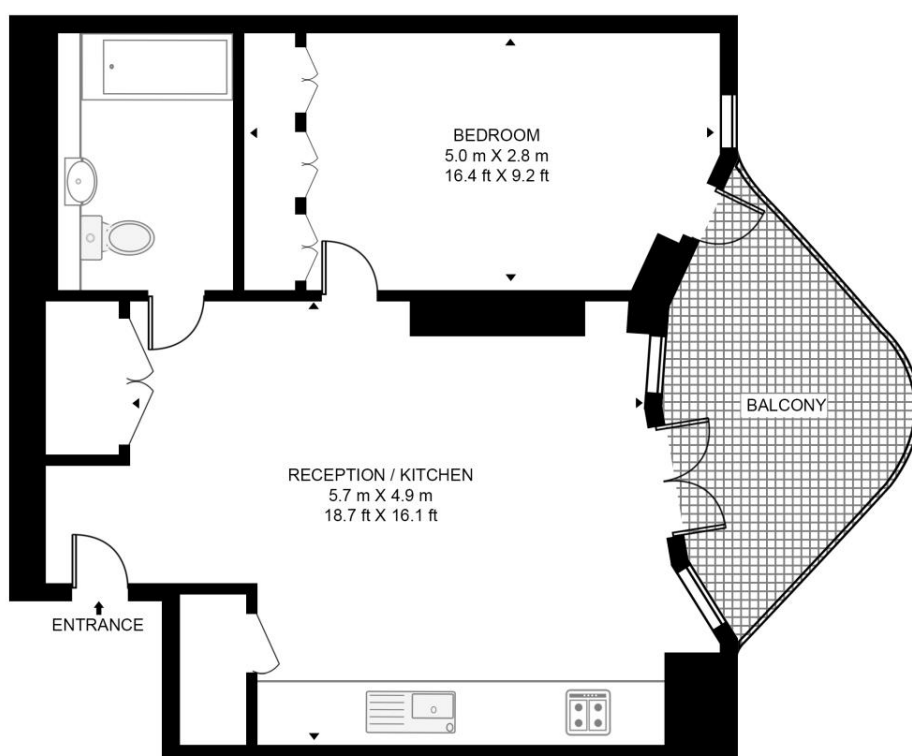
Rent is payable on a monthly basis and you may be required to

- 1 bedroom
- 1 bathroom
- 1st floor
- Large fitted wardrobes
- Comfort cooling & underfloor heating
- 24-hour concierge
- Private residents garden, cinema, lounge and workspace
- 0.7 miles from London bridge station
- Approx 551 sq ft.
- Fully furnished

Floorplan

551 sq ft | 51 sq m

EASTERN BUILDING, TRIPTYCH BANKSIDE
APPROXIMATE GROSS INTERNAL FLOOR AREA 551 SQ.FT (51.2 SQ.M)



FIRST FLOOR



This floor plan has been defined by the RICS Code of Measurement. This floor plan and all others are for approximate representative purposes only and upon usage is agreed to as such by the client.

WWW: hdvirtualart.com | TEL: 0203.974.1567 | EMAIL: info@hdvirtualart.com

City
25 Walbrook The Walbrook
Building,
London EC4N 8AF
+4420 7337 4000

Urban living, your way.

jll.co.uk/residential

© 2019 Jones Lang LaSalle IP, Inc. All rights reserved. All information contained herein is from sources deemed reliable; however, no representation or warranty is made to the accuracy thereof.

