



## Bromyard Avenue, London W3

Guide price £320,000 Leasehold







# Description

A stylish second floor Manhattan style 1 bedroom apartment (with lift) in this gated development with 24 hour concierge in West London. The property consists of one double bedroom, one bathroom, reception room and a fully fitted, open plan kitchen. Napier House is conveniently located close to Westfield Shopping Centre and the open spaces of Acton Park.

Leasehold 977 years (exp. 31/12/3002)

Ground Rent: TBC  
Service Charge: TBC  
Council Tax Band: C  
EPC Rating: B

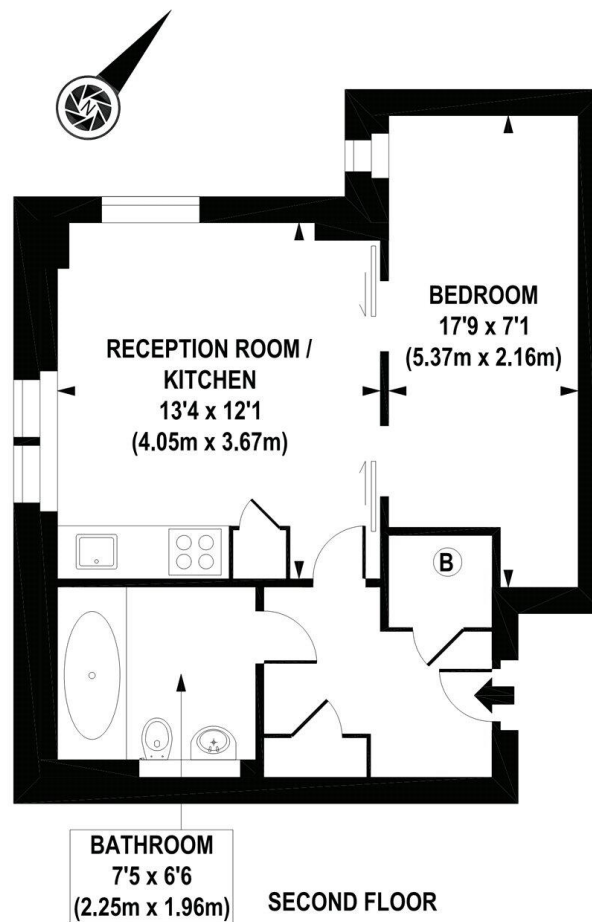
- 1 Bedroom
- 1 Bathroom
- Open-plan Kitchen/Reception
- Double aspect
- 2nd Floor

Lift  
24hr Concierge  
Acton Park within half a mile  
Acton Central Station - Mildway within a mile  
Approx. 409 sq ft / 38.02 sq m



# Floorplan

409 sq ft | 38 sq m



APPROX. GROSS INTERNAL FLOOR AREA 409 sq. ft / 38.02 sq. m

COMPLIANT WITH RICS CODE OF MEASURING PRACTICE Floorplan is for illustrative purposes only and is not to scale. Every attempt has been made to ensure the accuracy of the floorplan shown, however all measurements, fixtures, fittings and data shown are an approximate interpretation for illustrative purposes only. Liability for errors, omissions or mis-statement through negligence or otherwise is hereby excluded.



Kew Bridge  
12 Capital Interchange Way,  
London TW8 0SP  
020 3147 1880  
[lettingskewbridge@jll.com](mailto:lettingskewbridge@jll.com)

*Urban living, your way.*

[jll.co.uk/residential](http://jll.co.uk/residential)

© 2019 Jones Lang LaSalle IP, Inc. All rights reserved. All information contained herein is from sources deemed reliable; however, no representation or warranty is made to the accuracy thereof.

