



Worship Street, London EC2A

£1,300,000 Leasehold







Description

Set on the 15th floor, this bright apartment extends to 876 sq ft of well proportioned living & entertaining space, with wonderful roof-top views over The City of London skyline.

The apartment comprises of an dual aspect open plan style reception room with beautiful floor to ceiling windows, fully fitted kitchen area, and a generous private balcony. A large principal bedroom suite includes an en-suite bathroom, whilst a second double bedroom featuring dual sinks and excellent storage are offered off a welcoming hallway with flowing natural light.

Principal Tower boasts an idyllic location, a short walk to Liverpool Street Station (0.3 miles) as well as Shoreditch High Street Station (0.3 miles). The development benefits from excellent amenities which include a pool with Jacuzzi, spa, gymnasium, residents' lounge/bar, private cinema room and 24 hour concierge.

Leasehold 974 years (exp. 30/05/3000)

Ground Rent: Approx. £650 pa

Service Charge: Approx. £10,381 pa

Council Tax Band: F

EPC Rating: B

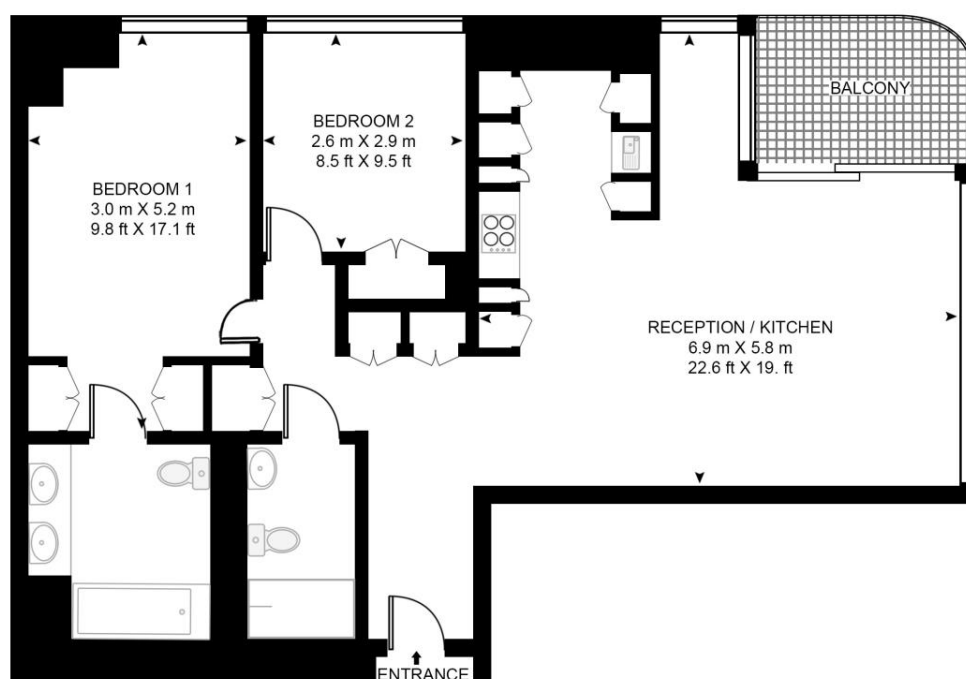
- 2 Double bedrooms
- 2 Bathrooms
- Dual aspect open-plan reception with high ceilings
- Private balcony with 15th floor views
- Liverpool Street Station (0.3 miles)
- Shoreditch High Street Station (0.3 miles)
- 24 Hour concierge, residents pool&spa and gym
- Approx. 876 sq ft / 81.4 sq m

Floorplan

876 sq ft | 81 sq m

PRINCIPAL TOWER, PRINCIPAL PLACE

APPROXIMATE GROSS INTERNAL FLOOR AREA 876 SQ.FT (81.4 SQ.M)



FIFTEENTH FLOOR



This floor plan has been defined by the RICS Code of Measurement. This floor plan and all others are for approximate representative purposes only and upon usage is agreed to as such by the client.

WWW: hdvirtualart.com | TEL: 0203.974.1567 | EMAIL: info@hdvirtualart.com

City
25 Walbrook The Walbrook
Building,
London EC4N 8AF
+4420 7337 4000

Urban living, your way.

jll.co.uk/residential

© 2019 Jones Lang LaSalle IP, Inc. All rights reserved. All information contained herein is from sources deemed reliable; however, no representation or warranty is made to the accuracy thereof.

