



Thalia Close, London SE10

Guide price £1,000,000 Freehold







Description

A beautifully presented four bedroom modern end of terrace house which features a integral garage, further parking and located in a quiet close just off Feathers Place moments from Maze Hill mainline station.

Nestled in the distinguished maritime quarter of Greenwich, this attractive four-bedroom freehold house occupies a coveted position on Thalia Close, where period charm meets contemporary family living. The property showcases the character and warmth typical of Greenwich's residential streets, offering a welcoming atmosphere within one of London's most historically significant neighbourhoods.

The house presents beautifully proportioned accommodation across its thoughtfully designed layout, with four well-appointed bedrooms and two bathrooms providing comfortable family living. Natural light flows throughout the interior spaces, creating bright and airy rooms that enhance the property's inherent charm and character. The practical yet elegant design ensures excellent functionality for modern family life.

The private rear garden features an expansive paved patio area, perfect for outdoor entertaining and al fresco dining throughout the seasons. This low-maintenance outdoor space provides a peaceful retreat from city life, offering the ideal setting for summer gatherings or quiet morning coffee. The property benefits from the added convenience of a garage and additional parking facilities, a rare and valuable asset in this sought-after central location.

Greenwich village exudes a unique blend of maritime heritage and contemporary sophistication, where cobbled streets lead to world-class museums, artisan markets, and riverside walks along the Thames. The area's rich naval history creates an atmosphere of timeless elegance, while the bustling weekend markets, independent boutiques, and acclaimed restaurants ensure vibrant modern living. Residents enjoy the best of both worlds with Greenwich Park's 180 acres of green space providing a magnificent backdrop for outdoor pursuits and recreation.

Transport connectivity proves exceptional with Cutty Sark DLR and Greenwich National Rail stations providing swift access to Canary Wharf, London Bridge, and Central London destinations. The area benefits from multiple transport options including river services along the Thames, creating seamless

Thalia Close is a beautiful gated private road just off Feathers Place, its own community in the heart of Greenwich. This is widely regarded as one of the very best locations in Greenwich and is on the cusp of east and west with the town centre is just a short walk away.

- End of Terrace
- Arranged over three floors
- Garage & off street parking
- Gated private road
- Private rear patio garden
- Approx. 1,390 sq ft (129.1 sq m)
- Moments from Royal Greenwich Park
- 5 Mins walk to Cutty Sark DLR
- Freehold
- Family-friendly layout

Floorplan

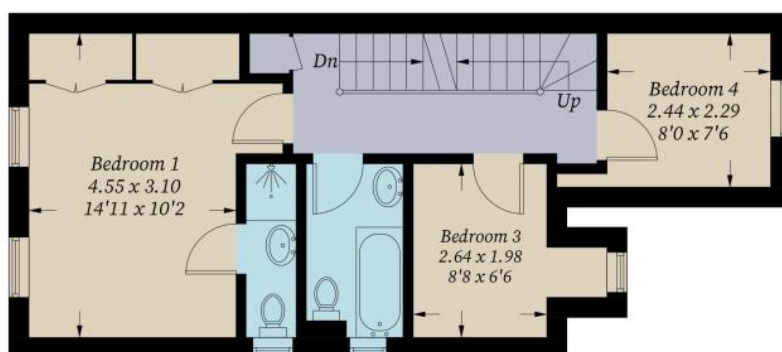
1,390 sq ft | 129 sq m

Thalia close, SE10

Approximate Gross Internal Area = 129.1 sq m / 1390 sq ft
(Including Garage)



Second Floor



First Floor



Ground Floor

Illustration for identification purposes only, measurements are approximate,
not to scale. Fourlabs.co © (ID1176691)

Greenwich
22 College Approach,
London SE10 9HY
02088589986
lettingsgreenwich@eu.jll.com

Urban living, your way.

jll.co.uk/residential

© 2019 Jones Lang LaSalle IP, Inc. All rights reserved. All information contained herein is from sources deemed reliable; however, no representation or warranty is made to the accuracy thereof.

