



# Great Eastern Road, London E15

£460,000 Leasehold









## Description

New to the market is an opportunity to purchase this very well-maintained 14th floor 1 double bedroom apartment in one Stratford's most popular and secure developments, Stratosphere Tower, E15.

Situated on the 14th floor and comprising of approximately 569 square feet, the property boasts entrance hall with large storage cupboard, a modern and fully fitted open-plan kitchen with integrated SMEG appliances, large living room with amazing views, one double bedroom with built in storage and ultra-modern and fully fitted family bathroom.

Residents of Stratosphere Tower benefit from a range of exclusive amenities, including a 24-hour concierge service, a well-equipped 36th residents' gym, a stylish sky lounge, and a roof terrace perfect for soaking in 360-degree views of the city.

The location is second to none, with Stratford Westfield shopping centre right on your doorstep. You'll be just 0.1 miles from one of London's best-connected transport hubs, offering access to the Central, Jubilee, DLR, Overground, Elizabeth Line, and TFL rail lines. The famous Olympic Park and East Village are within walking distance, where you'll find a vibrant array of independent bars, restaurants, and cafes.

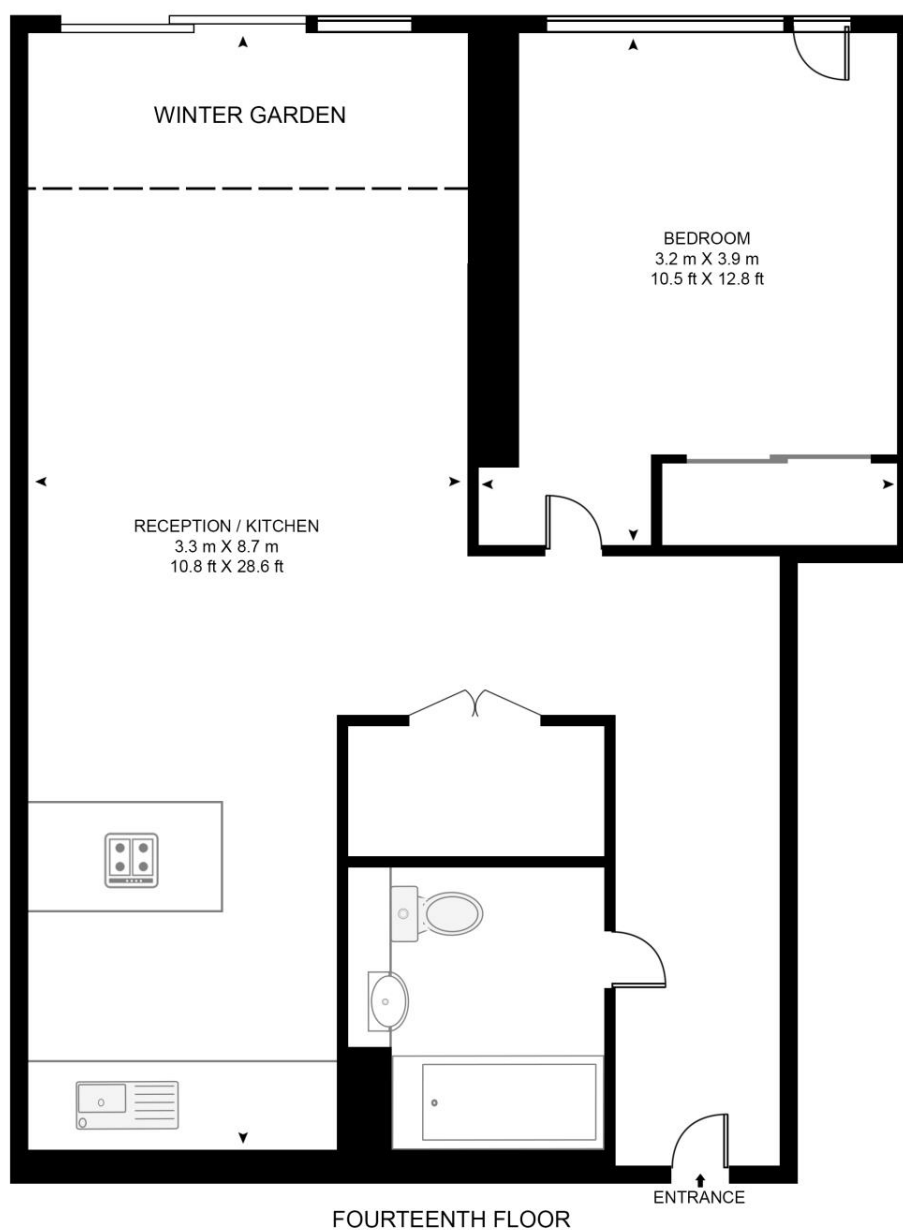
- One bedroom apartment
- Sought-after development
- Ultra-modern finish throughout
- 14th floor with lift access
- 24 Hour Concierge Service
- Residential gym & Wi-Fi lounge
- 36th floor roof terrace
- 0.1 mile from Stratford Station
- Approx. 569 sq. ft (52.9 sq. m)
- EPC: B

# Floorplan

569 sq ft | 53 sq m

## STRATOSPHERE TOWER

APPROXIMATE GROSS INTERNAL FLOOR AREA 569 SQ.FT (52.9 SQ.M)



This floor plan has been defined by the RICS Code of Measurement. This floor plan and all others are for approximate representative purposes only and upon usage is agreed to as such by the client.

WWW: [hdvirtualart.com](http://hdvirtualart.com) | TEL: 0203.974.1567 | EMAIL: [info@hdvirtualart.com](mailto:info@hdvirtualart.com)

Stratford  
5 Station Street,  
London E15 1DA  
+4420 3147 1500  
[Lettingsstratford@eu.jll.com](mailto:Lettingsstratford@eu.jll.com)

*Urban living, your way.*

[jll.co.uk/residential](http://jll.co.uk/residential)

© 2019 Jones Lang LaSalle IP, Inc. All rights reserved. All information contained herein is from sources deemed reliable; however, no representation or warranty is made to the accuracy thereof.

