

## Sun Street, London EC2A

Price £845 per week - Furnished









# Description

A stunning 1 bedroom apartment in the sought after and iconic One Crown Place, EC2, situated in the City of London.

This luxury 1 bedroom apartment in situated on the 16th floor benefitting 616sq ft of space including a reception room with winter garden, fully fitted kitchen, double bedroom with large fitted wardrobes and oak herringbone flooring.

The development has a high specification with comfort cooling and benefits from fantastic on site amenities which include 24 hour concierge residents' lounge, screening room, work hub, gym, private dining room, treatment room and communal terrace. One Crown boasts a fantastic location, a stone's throw from Liverpool Street Station (approximately 0.3 miles) and Moorgate Station (approximately 0.3 miles).

Rent is payable on a monthly basis and you may be required to pay more than a month's rent in advance, depending on your circumstances. You will be required to pay a 1 week holding deposit following a successful offer. Utility bills, council tax, telephone line and broadband are not included in the rent. As well as paying the rent, you may also be required to make some additional permitted payments. If your tenancy does not qualify as an AST, additional fees may apply. Please visit [jll.co](http://jll.co).

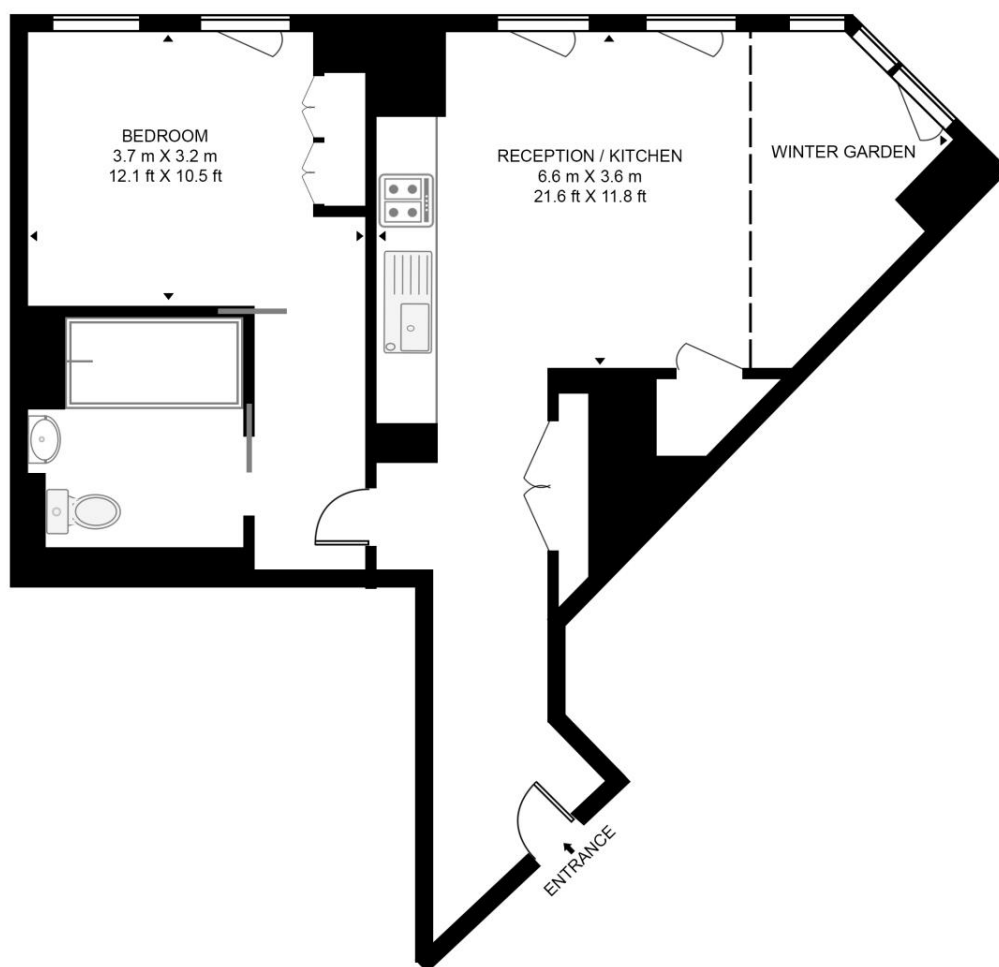
- 1 Bedroom
- 1 Bathroom
- 16th Floor
- Winter Garden
- 24 hour concierge
- On-site leisure facilities including gym, resident's lounge and screening room
- 0.3 miles from Liverpool Street Station
- Approx. 616 sq ft (57.2 sq m)
- Furnished
- EPC: B

# Floorplan

616 sq ft | 57 sq m

## ONE CROWN PLACE, SUN STREET

APPROXIMATE GROSS INTERNAL FLOOR AREA 616 SQ.FT (57.2 SQ.M)



SIXTEENTH FLOOR



This floor plan has been defined by the RICS Code of Measurement. This floor plan and all others are for approximate representative purposes only and upon usage is agreed to as such by the client.  
WWW: [hdvirtualart.com](http://hdvirtualart.com) | TEL: 0203.974.1567 | EMAIL: [info@hdvirtualart.com](mailto:info@hdvirtualart.com)

City  
25 Walbrook The Walbrook  
Building,  
London EC4N 8AF  
+4420 7337 4000

*Urban living, your way.*

[jll.co.uk/residential](http://jll.co.uk/residential)

© 2019 Jones Lang LaSalle IP, Inc. All rights reserved. All information contained herein is from sources deemed reliable; however, no representation or warranty is made to the accuracy thereof.

