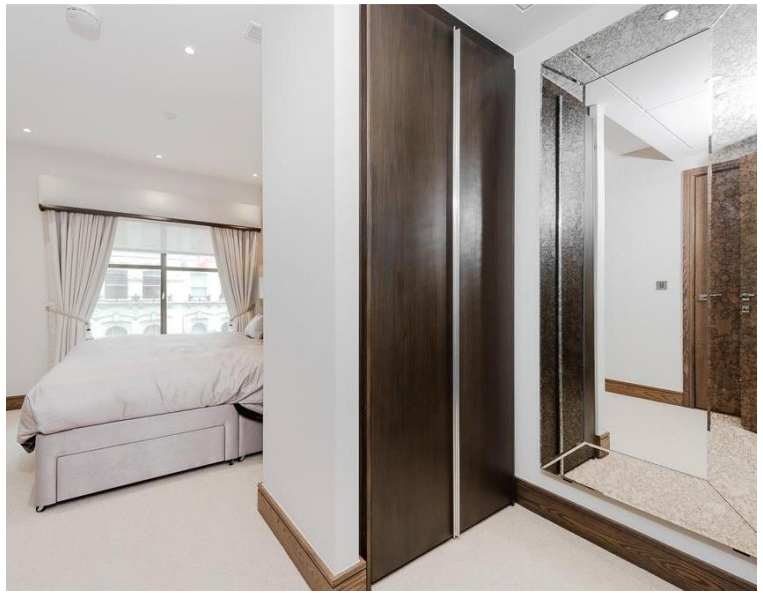
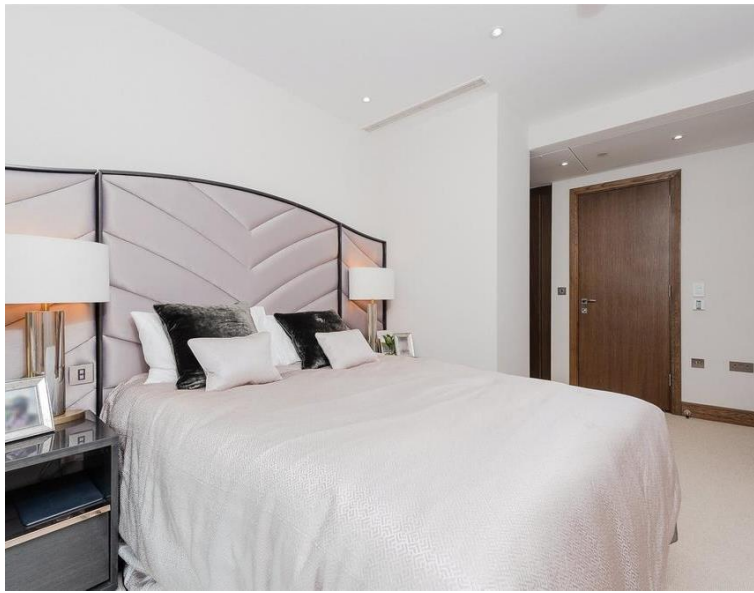




Hanway Street, London W1T
£1,500,000 Leasehold







Description

This elegant apartment features a flowing layout with a welcoming reception room opening into a semi-open plan kitchen and dining area. The principal bedroom has floor to ceiling windows, complete with an en suite shower room and ample storage. The second double bedroom is also complete with ample storage, and the apartment is offered with wooden flooring throughout, comfort cooling and underfloor heating.

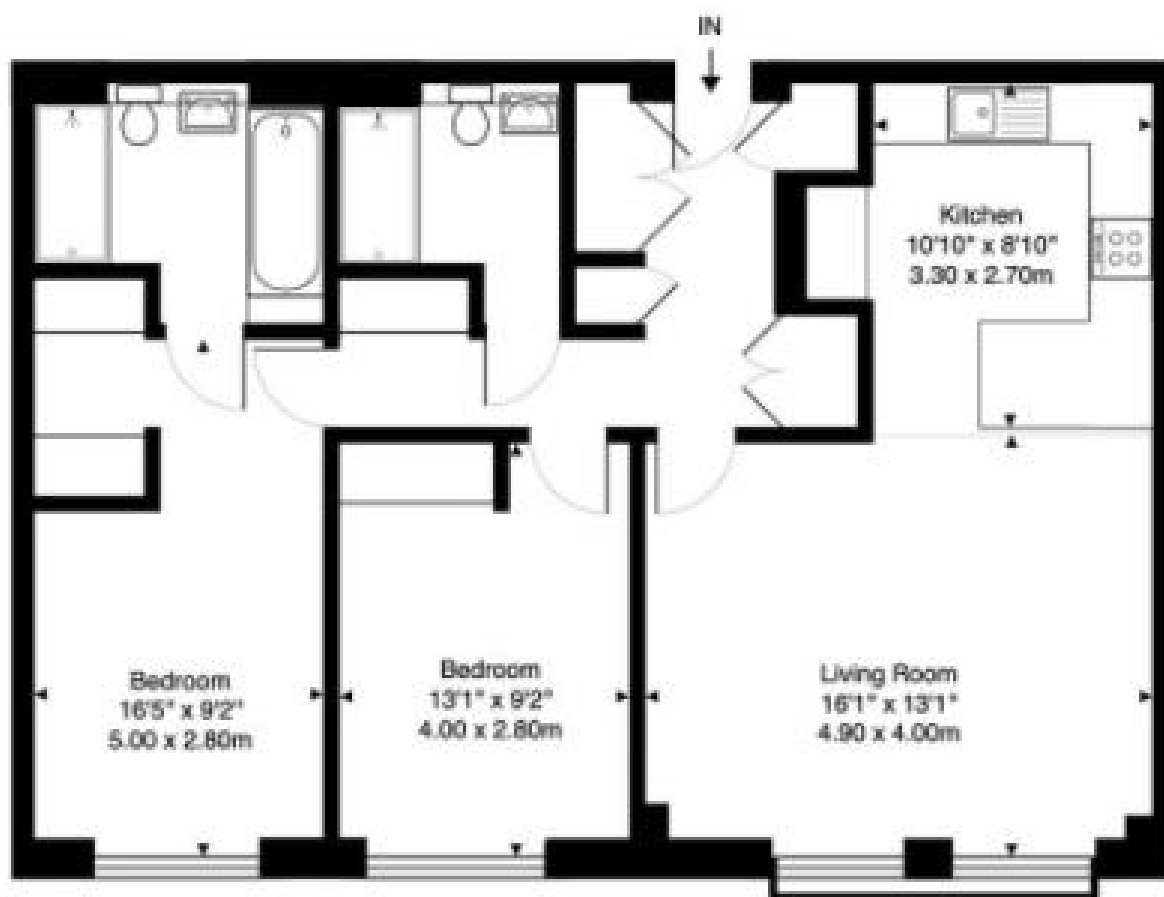
The building also benefits from a concierge and is just a short walk to excellent transport links of Tottenham Court Road Underground Station and Elizabeth Line. Neighbouring areas of Soho, Covent Garden, Marylebone and Mayfair are also a short walk and offer an excellent selection of shopping, cafes, restaurants and bars.

Leasehold 990 years (exp. 17/06/3016)
Ground Rent: Approx. £500 pa
Service Charge: Approx. £8,500 pa
Council Tax Band: C
EPC Rating: G

- 2 Bedrooms
- 2 Bathrooms
- South-facing aspect from all principal rooms
- Comfort cooling and underfloor heating
- 4th floor
- Lift
- Excellent transport links close by
- Ideally located in the heart of Fitzrovia and close to Soho
- Approx. 844 sq ft / 78.5 sq m

Floorplan

844 sq ft | 78 sq m



4th Floor

Total Internal Area 844 ft² ... 78.5 m²

Mayfair and Marylebone
St George Street,
London W1S 2FQ
+44 207 399 5550
mayfair@jll.com

Urban living, your way.

jll.co.uk/residential

© 2019 Jones Lang LaSalle IP, Inc. All rights reserved. All information contained herein is from sources deemed reliable; however, no representation or warranty is made to the accuracy thereof.

