



High Street, London E15

£450,000 Leasehold







Description

This modern two bedroom/two bathroom penthouse apartment offering panoramic views is located within the popular and secure development, City West Tower E15.

Ultra modern throughout, this spacious penthouse comprises integrated a high spec fully integrated kitchen, fully tiled luxury bathrooms with mirrored cabinets, two double bedrooms with built in storage and a spacious reception room with floor to ceiling windows offering fantastic far reaching views.

Residents of City West Tower enjoy exclusive access to a range of premium amenities. The 34th-floor garden terrace provides over 880 sq. ft of dramatically landscaped communal space, perfect for relaxation and socializing. Additional facilities include a private lounge, 24-hour concierge service, and a fully equipped resident's gymnasium, ensuring a luxurious and convenient lifestyle.

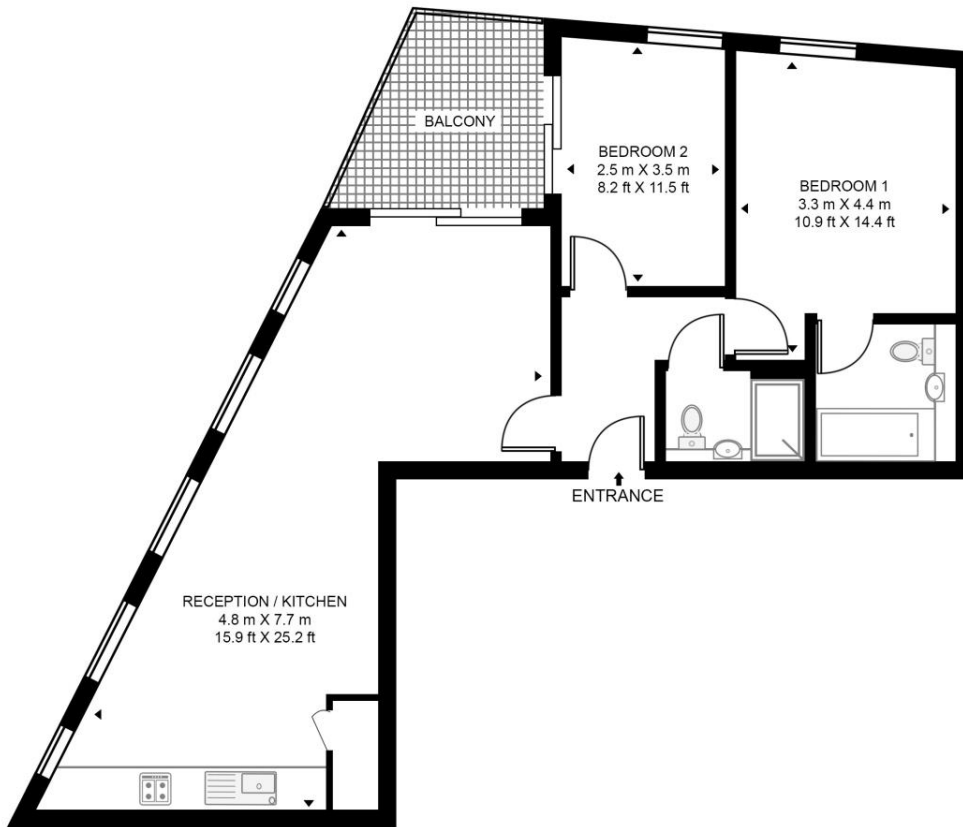
Walking distance to the Olympic park, City West Tower is also just a short walk from Pudding Mill Lane DLR station and Bow DLR, easy access to Westfield shopping centre and Stratford underground station for access to multiple tube lines and over ground options.

- Two bedroom
- Two bathroom
- Modern finish
- 15th floor Penthouse
- 0.4 mile to Bow Church and Pudding Mill Lane DLR
- Walking distance to Stratford station, Westfield and the Olympic Park
- 24hr Concierge
- Roof terrace
- Residents gym
- Approx. 764 sq ft (71 sq m.)

Floorplan

764 sq ft | 71 sq m

CITY WEST TOWER, HIGH STREET
APPROXIMATE GROSS INTERNAL FLOOR AREA 764 SQ.FT (71 SQ.M)



FIFTEENTH FLOOR



This floor plan has been defined by the RICS Code of Measurement. This floor plan and all others are for approximate representative purposes only and upon usage is agreed to as such by the client.
WWW: hdvirtualart.com | TEL: 0203.974.1567 | EMAIL: info@hdvirtualart.com

Stratford
5 Station Street,
London E15 1DA
+4420 3147 1500
Lettingsstratford@eu.jll.com

Urban living, your way.

jll.co.uk/residential

© 2019 Jones Lang LaSalle IP, Inc. All rights reserved. All information contained herein is from sources deemed reliable; however, no representation or warranty is made to the accuracy thereof.

