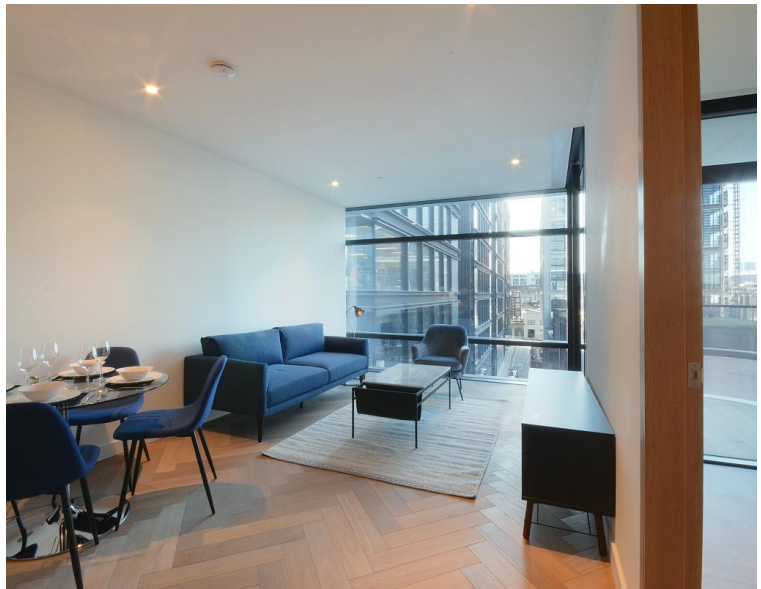


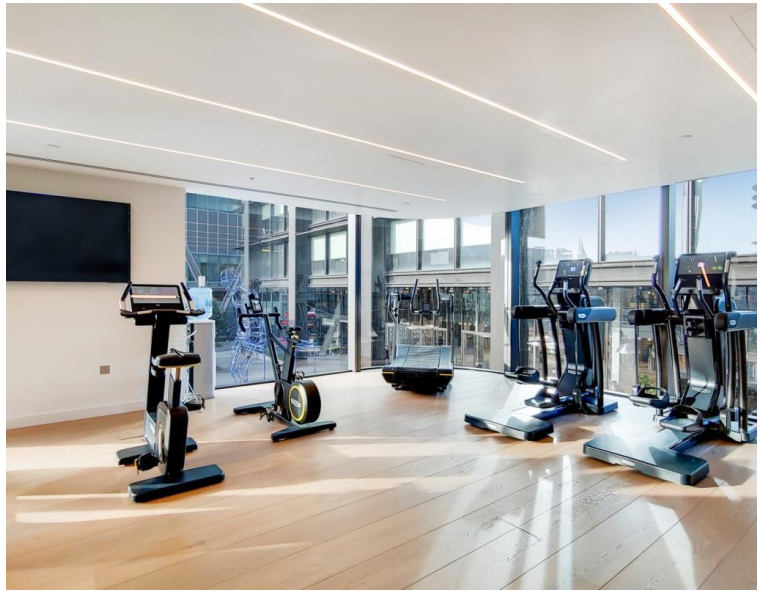
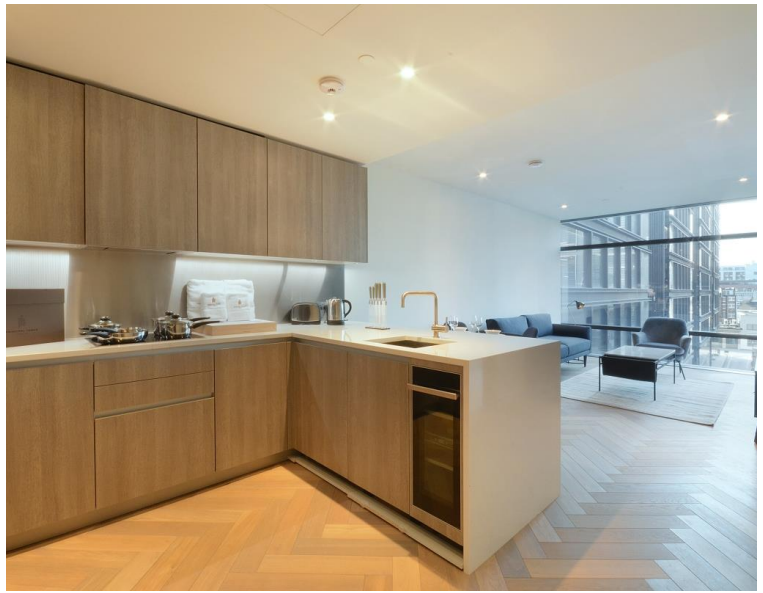
## Principal Place, London EC2A

Price £795 per week - Furnished









## Description

Situated from the 4th floor, this luxury 1 bedroom apartment comprises of a spacious open plan reception with fully fitted u-shaped kitchen, private balcony, large double bedroom with fitted wardrobes, luxury Porcelain en suite shower room with under floor heating, comfort cooling and heating and oak herringbone flooring.

Principal Tower boasts an idyllic location, a short walk to Liverpool Street Station (0.3 miles) as well as Shoreditch High Street Station (0.3 miles). The development benefits from excellent amenities which include a pool with Jacuzzi, spa, gymnasium, residents' lounge/bar, private cinema room and 24 hour concierge.

We understand that cooling / heating is delivered via a communal system for which separate charges apply.

Rent is payable on a monthly basis and you may be required to pay more than a month's rent in advance, depending on your circumstances. You will be required to pay a 1 week holding deposit following a successful offer. Utility bills, council tax, telephone line and broadband are not included in the rent. As well as paying the rent, you may also be required to make some additional permitted payments. If your tenancy does not q

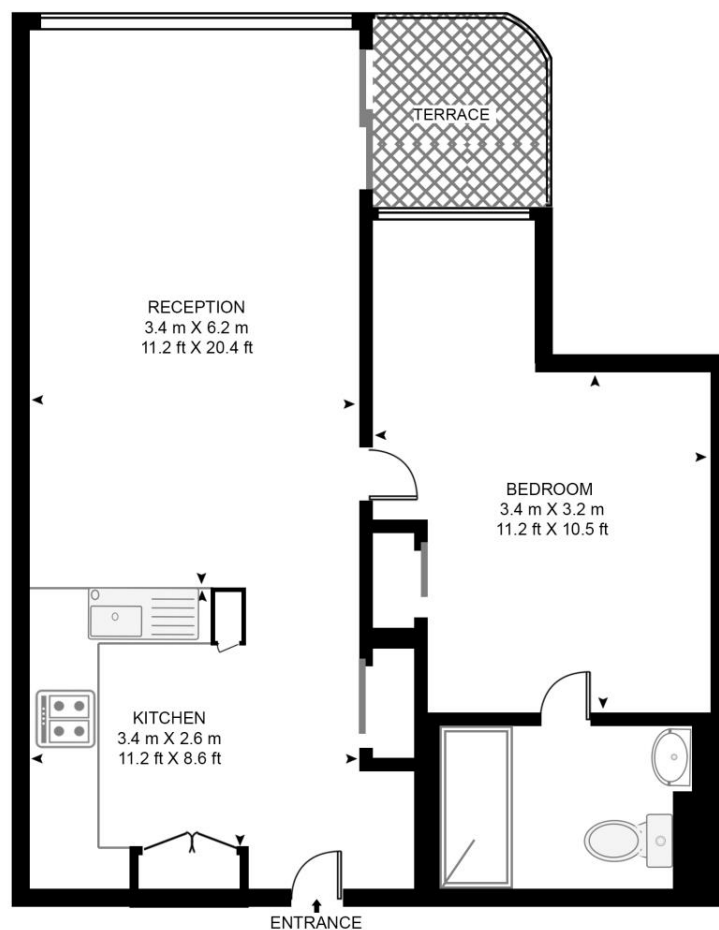
- West facing apartment
- Large private balcony
- 4th floor
- Open plan reception
- Large bedroom
- Residents pool & spa
- Residents gym
- 24 hour concierge
- 0.3 miles from Liverpool Street Station
- Approx 535 sq ft (49.7 sq m)

# Floorplan

535 sq ft | 50 sq m

## PRINCIPAL TOWER, EC2A

APPROXIMATE GROSS INTERNAL FLOOR AREA 535 SQ.FT (49.7 SQ.M)



## FOURTH FLOOR

**HDVA**

This floor plan has been defined by the RICS Code of Measurement. This floor plan and all others are for approximate representative purposes only and upon usage is agreed to as such by the client.

WWW: [hdvirtualart.com](http://hdvirtualart.com) | TEL: 0203.974.1567 | EMAIL: [info@hdvirtualart.com](mailto:info@hdvirtualart.com)

City  
25 Walbrook The Walbrook  
Building,  
London EC4N 8AF  
+4420 7337 4000

*Urban living, your way.*

[jll.co.uk/residential](http://jll.co.uk/residential)

© 2019 Jones Lang LaSalle IP, Inc. All rights reserved. All information contained herein is from sources deemed reliable; however, no representation or warranty is made to the accuracy thereof.

