

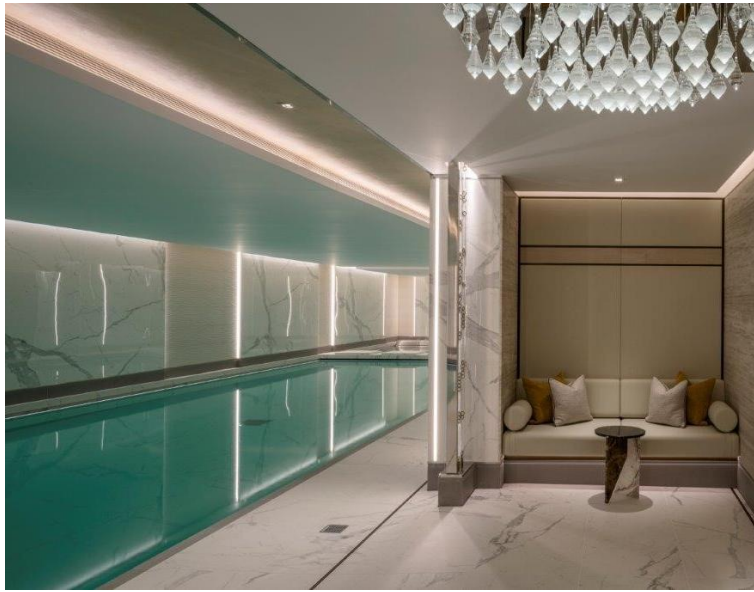
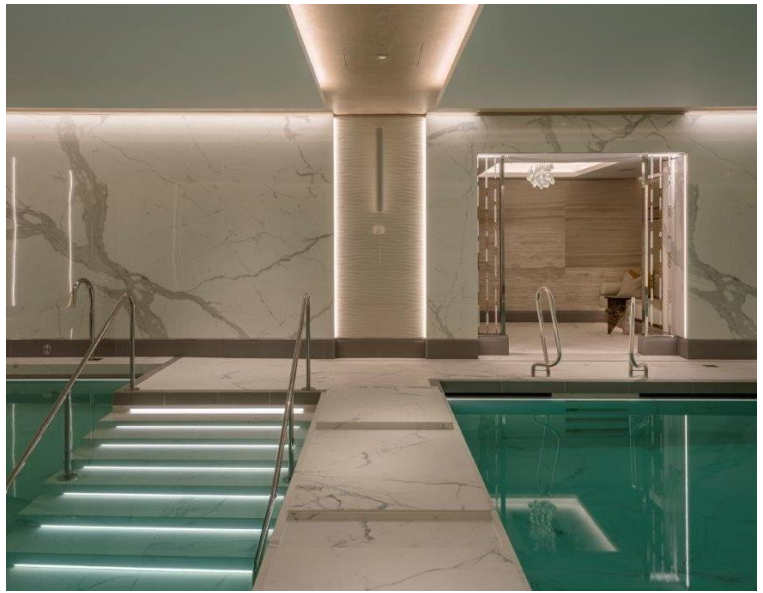


# Casson Square, London SE1

Price £1,250 per week - Furnished







## Description

A 22nd floor 2 bedroom apartment in the sought after 8 Casson Square, a luxury development moments from Waterloo Station, SE1.

This double aspect 2 bedroom apartment is situated on the 22nd floor and boasts stunning South / Eastern views towards The Shard. The apartment comprises 2 double bedrooms with large fitted wardrobes to each, living area with a fully fitted open plan kitchen to include Miele and Siemens appliances, balcony with stunning views, wood flooring and excellent storage space. The property has a high specification throughout featuring comfort cooling, underfloor heating and smart home technology.

The development benefits from top of the range amenities which include an on-site gym, swimming pool with spa, exclusive resident's lounge and 24-hour concierge. 8 Casson Square is in the heart of Southbank and on the doorstep of Waterloo Station (0.2 miles) and moments from the iconic London Eye. The City of London is within easy reach as is London's famous West End.

We understand that cooling / heating is delivered via a communal system for which separate charges apply.

- 2 Bedrooms
- 2 Bathrooms
- 22nd floor
- Balcony with views towards The Shard
- Underfloor heating
- 24 hour concierge
- On-site leisure facilities including spa, cinema and gym
- 0.2 miles from Waterloo Station
- Approx. 972 sq ft (90 sq m)
- Leasehold

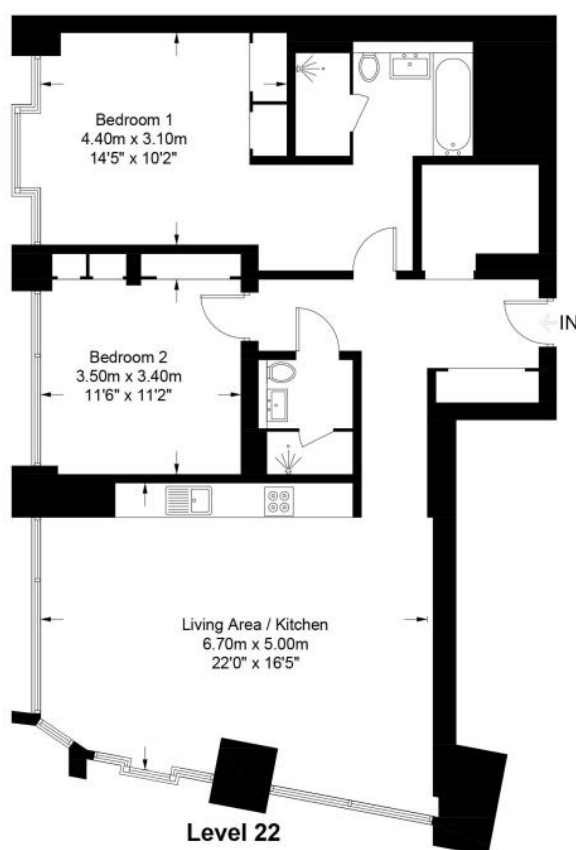
# Floorplan

972 sq ft | 90 sq m



## Casson Square, SE1

Approximate Gross Internal Area = 972 sq ft / 90 sq m



This plan is for layout guidance only. Not drawn to scale unless stated. Windows and door openings are approximate. Whilst every care is taken in the preparation of this plan, please check all dimensions, shapes and compass bearings before making any decisions reliant upon them. (ID796892)

City  
25 Walbrook The Walbrook  
Building,  
London EC4N 8AF  
+4420 7337 4000

*Urban living, your way.*

[jll.co.uk/residential](http://jll.co.uk/residential)

© 2019 Jones Lang LaSalle IP, Inc. All rights reserved. All information contained herein is from sources deemed reliable; however, no representation or warranty is made to the accuracy thereof.

