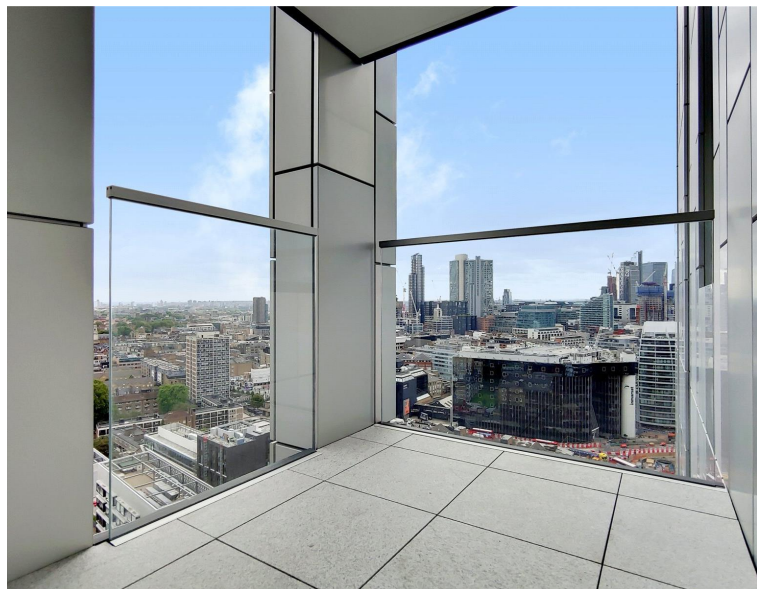
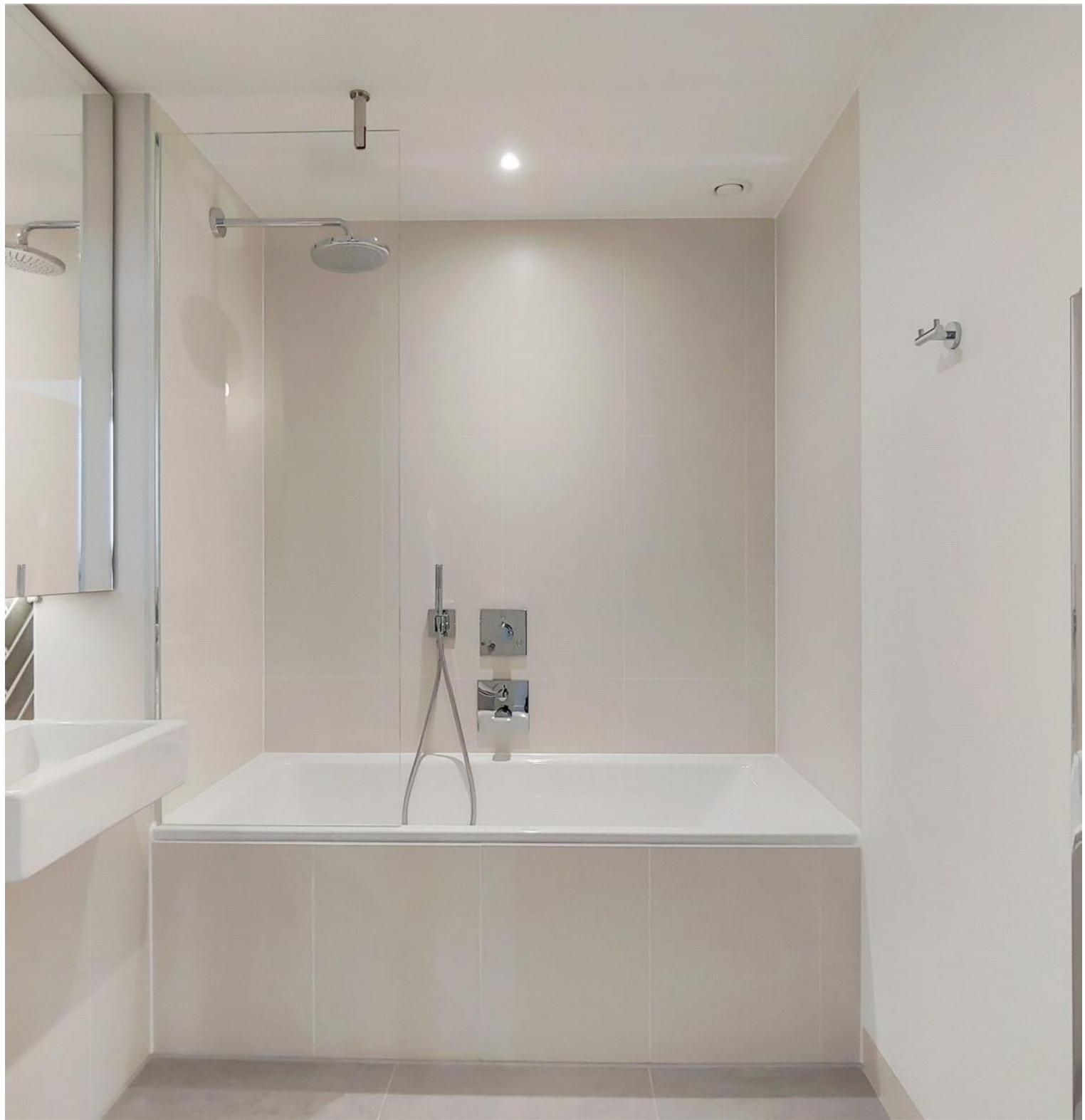


City Road, London EC1V

Price £765 per week - Furnished







Description

Situated on the 19th floor, this stunning 1 bedroom apartment, 533 sqft, comprises a large open-plan reception with fully fitted kitchen, stunning views towards Canary Wharf and Stratford, bedroom with large fitted wardrobe, luxury bathroom with Porcelain finish, balcony and solid wood flooring.

Resident's benefit from fantastic on-site amenities which include pool, spa, gymnasium, private cinema room, resident's only business lounge and 24 hour concierge. Each apartment also benefits from comfort cooling / heating. The Atlas Building is next to Old Street station (0.1 mile) and a short walk to the City, Hoxton, Shoreditch and Angel.

Rent is payable on a monthly basis and you may be required to pay more than a month's rent in advance, depending on your circumstances. You will be required to pay a 1 week holding deposit following a successful offer. Utility bills, council tax, telephone line and broadband are not included in the rent. As well as paying the rent, you may also be required to make some additional permitted payments. If your tenancy does not qualify as an AST, additional fees may apply. Please visit jll.co.uk/fees for details of fees which may be payable when renting a property.

- One bedroom apartment
- 19th floor
- 533 sq ft (49.5 sq m)
- Dual aspect
- Far reaching roof top views
- Good-sized balcony
- Luxury building
- 24hr Concierge
- Residents facilities inc pool, gym & private cinema
- Ideally located

Floorplan

533 sq ft | 50 sq m

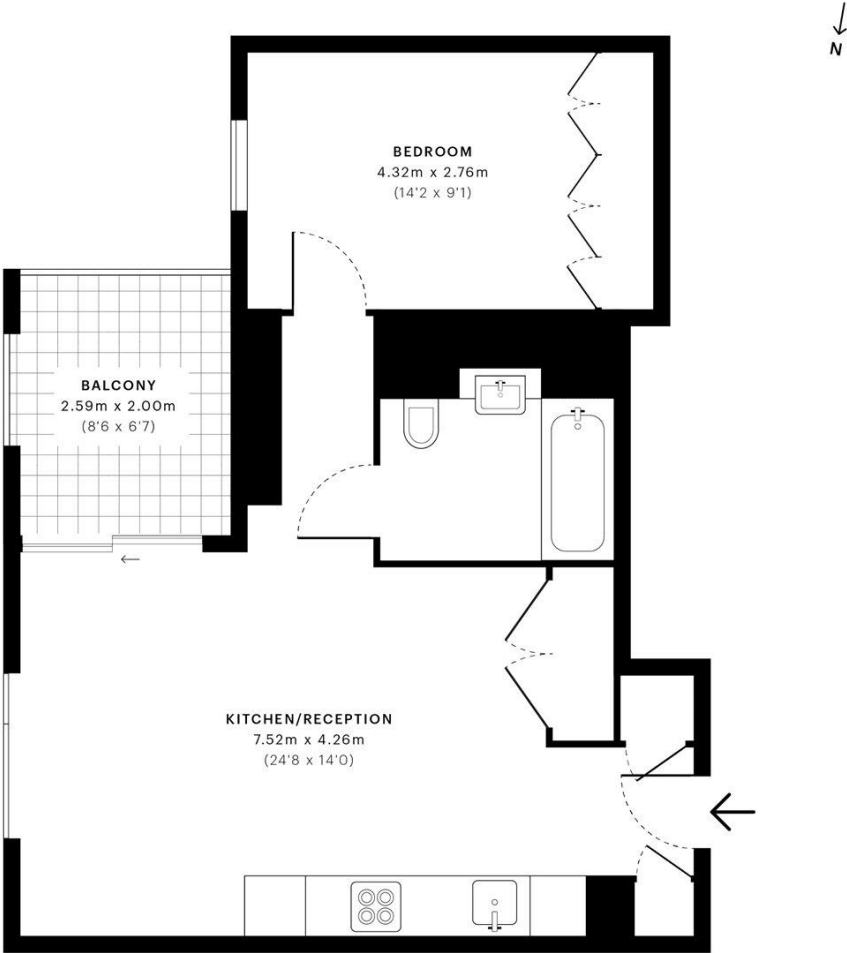


City Road, EC1V

CAPTURE DATE
31/07/2019

LASER SCAN POINTS
24,057,278

GROSS INTERNAL AREA
49.5 Sqm / 533.2 Sqft



— Nineteenth Floor



GROSS INTERNAL AREA
The footprint of the property
49.5 Sqm / 533.2 Sqft



NET AREA (INTERNAL)
Excludes walls and external features
47.1 Sqm / 506.8 Sqft



EXTERNAL STRUCTURAL FEATURES
Balconies, terraces, verandas etc.
5.2 Sqm / 55.5 Sqft



RESTRICTED HEAD HEIGHT
Limited use area under 1.5m
0.0 Sqm / 0.0 Sqft



Spec floor plans are produced in accordance with the Royal Institution of Chartered Surveyors' Property Measurement Standards. Plots and gardens are illustrative only and are excluded from all area calculations. Due to rounding, numbers may not add up precisely.



IPMS 3B RESIDENTIAL
54.8 Sqm / 590.0 Sqft

IPMS 3C RESIDENTIAL
52.4 Sqm / 563.6 Sqft

SPEC ID
5d35c6fb5a0efe0a1c2c6a50

City
25 Walbrook The Walbrook
Building,
London EC4N 8AF
+4420 7337 4000

Urban living, your way.

jll.co.uk/residential

© 2019 Jones Lang LaSalle IP, Inc. All rights reserved. All information contained herein is from sources deemed reliable; however, no representation or warranty is made to the accuracy thereof.

