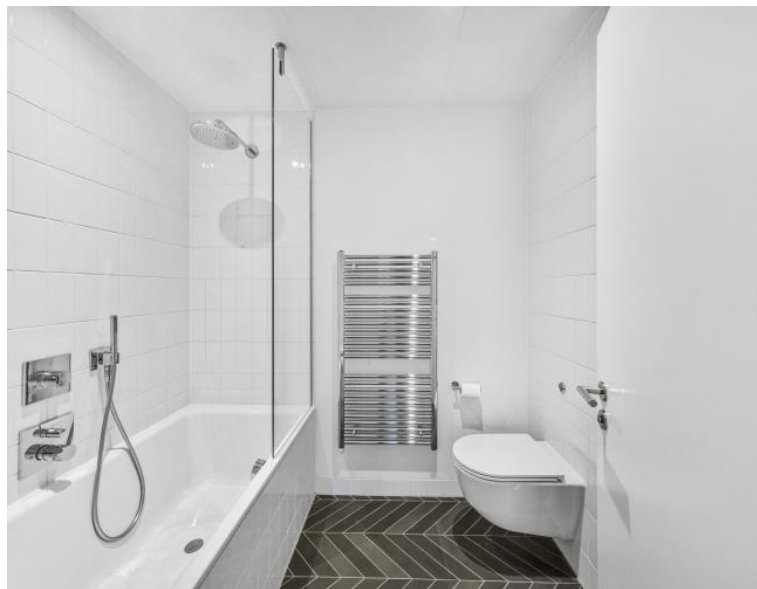
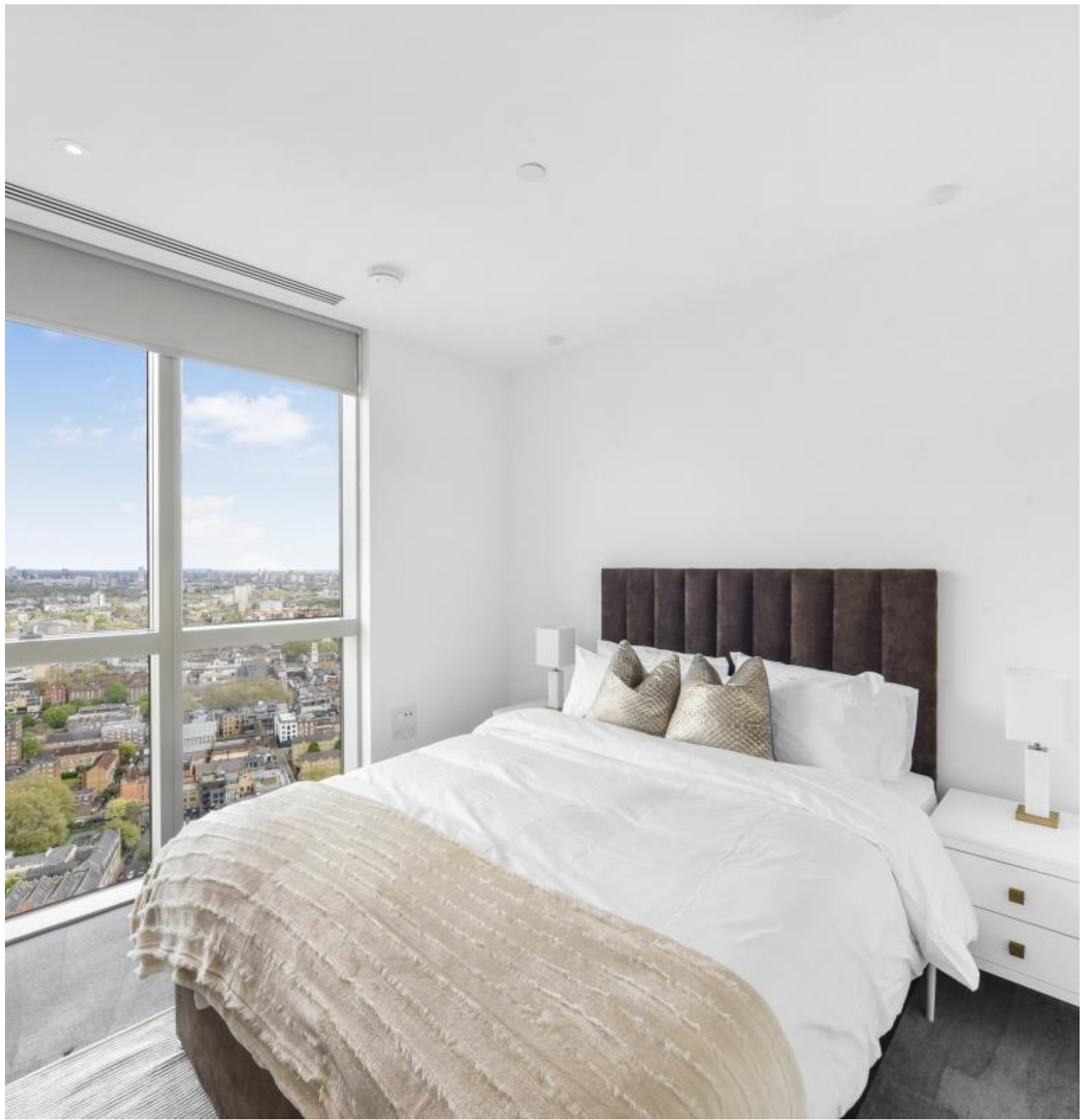




City Road, London EC1V

Price £1,100 per week - Furnished







Description

A luxury apartment within Old Street's most popular development, the Atlas Building.

Situated on the 33rd floor, the spacious 2 bedroom apartment boasts approximately 961 sq.ft of living space and is furnished to an exceptional standard.

This stunning apartment comprises a spacious open plan living and dining area, fully fitted kitchen with island, large balcony, stunning views of the City skyline, London Eye and West London, master bedroom with en suite and fitted wardrobes, second double bedroom with fitted wardrobes, luxury bathrooms and excellent storage space.

The Atlas Building is next to Old Street station (0.1 mile) and ideally situated for the City, Hoxton, Shoreditch and Angel. The development offers top of the range amenities which includes pool, spa, gymnasium, private cinema room, resident's only business lounge and 24 hour concierge.

We understand that cooling / heating is delivered via a communal system for which separate charges apply.

Rent is payable on a monthly basis and you may be required to pay more than a month's rent in advance, depending on your circumstances. You will be required to pay a 1 week holding deposit following a successful offer. Utility bills, council tax, telephone line and broadband are not included in the rent. As well as paying the rent, you may also be required to make some additional permitted payments. If your tenancy does not qualify as an AST, additional fees may apply. Please visit jll.co.uk/fees for details of fees which may be payable when renting a property.

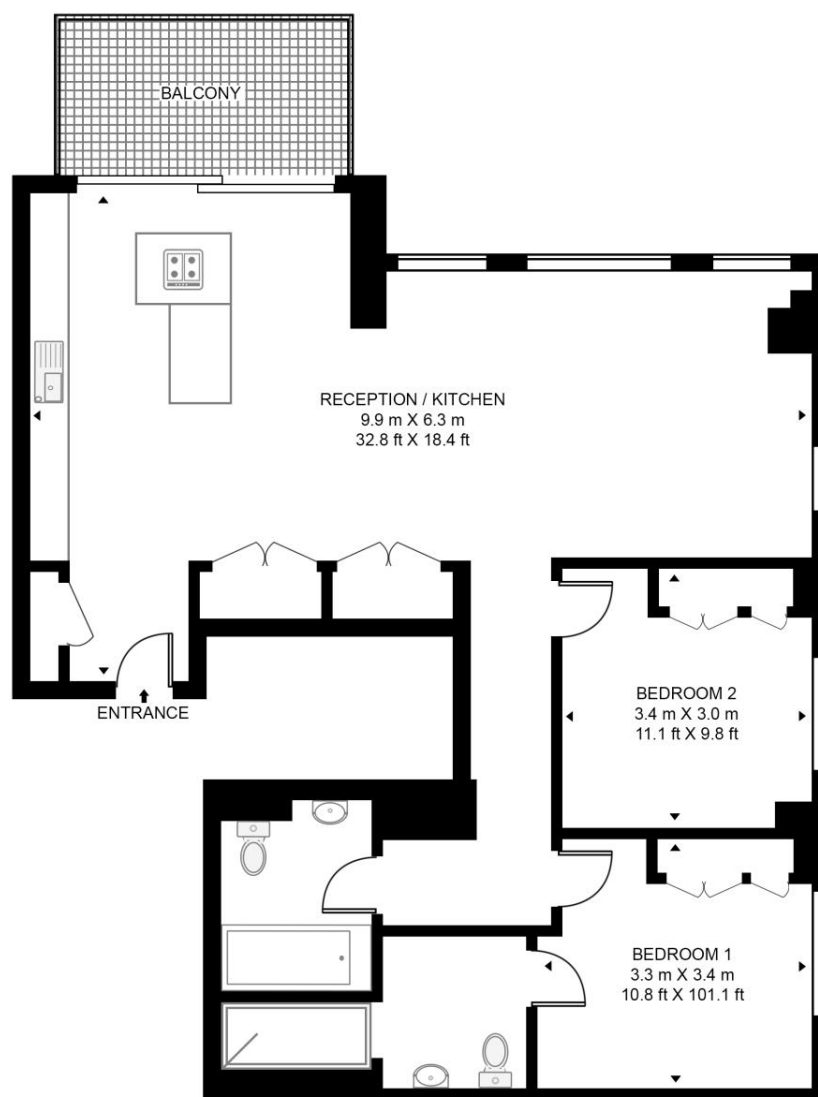
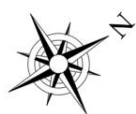
- 2 Bedrooms
- 2 Bathrooms
- 33rd floor
- Private balcony
- On-site leisure facilities including pool, spa and cinema
- 24 hour concierge
- 0.1 miles from Old Street Station
- Approx. 961 sq ft (89.3 sq m)
- EPC: B
- Council tax: Band F

Floorplan

961 sq ft | 89 sq m

THE ATLAS BUILDING, 145 CITY ROAD

APPROXIMATE GROSS INTERNAL FLOOR AREA 961 SQ.FT (89.3 SQ.M)



THIRTY THIRD FLOOR



This floor plan has been defined by the RICS Code of Measurement. This floor plan and all others are for approximate representative purposes only and upon usage is agreed to as such by the client.

WWW: hdvirtualart.com | TEL: 0203.974.1567 | EMAIL: info@hdvirtualart.com

City
25 Walbrook The Walbrook
Building,
London EC4N 8AF
+4420 7337 4000

Urban living, your way.

jll.co.uk/residential

© 2019 Jones Lang LaSalle IP, Inc. All rights reserved. All information contained herein is from sources deemed reliable; however, no representation or warranty is made to the accuracy thereof.

