

New Burlington Place, London W1S

£2,500,000 Leasehold







Description

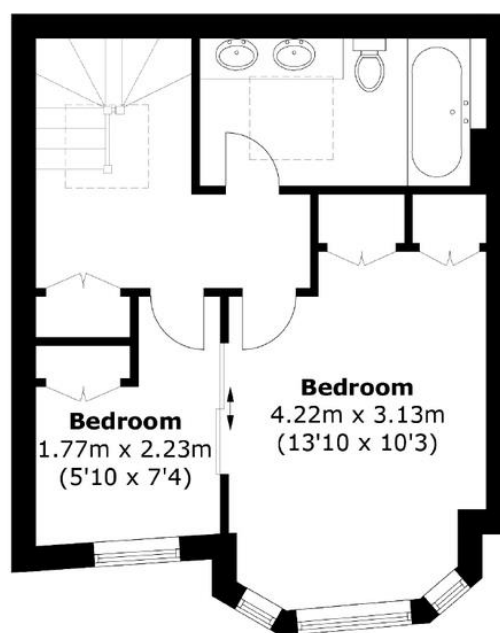
Accessed via a discreet side street off Savile Row, the ground floor showcases an open-plan reception room with a luxuriously appointed kitchen. This level also features a guest cloakroom, ample storage cupboards, and bespoke wall-mounted fitted units.

Ascending to the first floor, one discovers a magnificent principal bedroom suite, complete with extensive wardrobe, storage, and dressing areas, as well as access to a spacious en-suite shower room. An additional storage cupboard is conveniently located off the hallway on this level. The top floor presents versatile living options, offering either two additional bedrooms or a generously sized second bedroom and a dedicated study. This floor maintains the property's commitment to storage solutions, with substantial wardrobe space and a family bathroom accessible from the hallway. This bespoke residence, positioned just off Savile Row, enjoys an enviable location between Regent Street and New Bond Street. Residents benefit from excellent transport links across the TFL network, with multiple access points in close proximity. Furthermore, a diverse array of world-class shopping and dining experiences are readily available in the immediate vicinity.

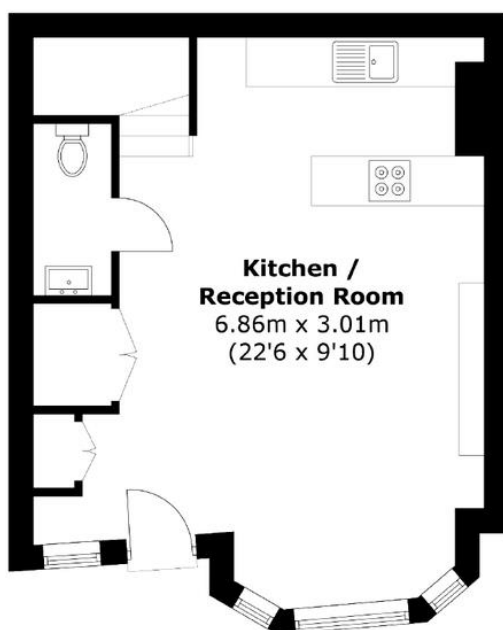
- Bespoke Mayfair house
- 2 / 3 Bedrooms
- 2 Bathrooms
- Refurbished throughout
- Flexible accommodation
- Luxury finishes throughout
- Secluded location in Mayfair
- Air conditioning
- Approx. 1123 sq ft / 104 sq m

Floorplan

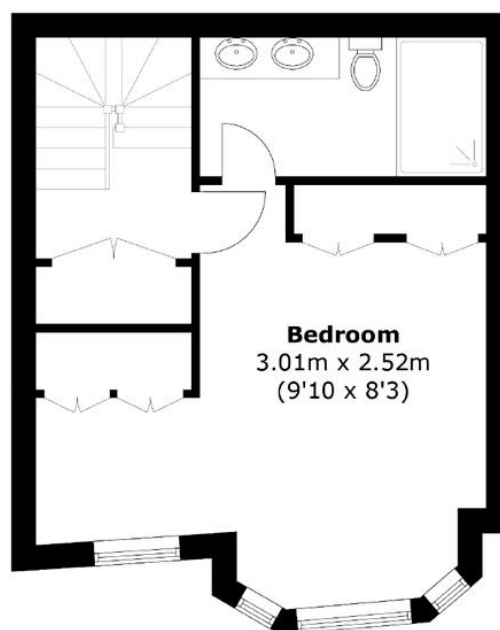
1,123 sq ft | 104 sq m



Second Floor



Ground Floor



First Floor

Total area (approx.): 104.4 sq. m (1,123.8 sq. ft)

Mayfair and Marylebone
St George Street,
London W1S 2FQ
+44 207 399 5550
mayfair@jll.com

Urban living, your way.

jll.co.uk/residential

© 2019 Jones Lang LaSalle IP, Inc. All rights reserved. All information contained herein is from sources deemed reliable; however, no representation or warranty is made to the accuracy thereof.

