



Cendal Crescent, London E1

Price £715 per week - Furnished







Description

JLL are delighted to present a brand new two bedroom apartment in the final phase of Silk District, E1, conveniently located for access to the City of London.

Offering great living space and boasting 765sq ft. Offered fully furnished, the apartment will comprise an open plan living room and integrated kitchen, two large double bedrooms, with large fitted wardrobes in the master bedroom, two bathrooms with porcelain finish, tiled flooring throughout good storage space.

The Silk District is a brand new development from Mount Anvil and offers residents fantastic amenities which include 24 hour concierge, on site gym, cinema room, rooftop gardens and resident's lounge. The development is within easy reach of the City of London and in the heart of the Whitechapel regeneration area, approximately 0.3 miles from Whitechapel Underground / Crossrail station.

Rent is payable on a monthly basis and you may be required to pay more than a month's rent in advance, depending on your circumstances. You will be required to pay a 1 week holding deposit following a successful offer. Utility bills, council tax, telephone line and broadband are not included in the rent. As well as paying the rent, you may also be required to make som

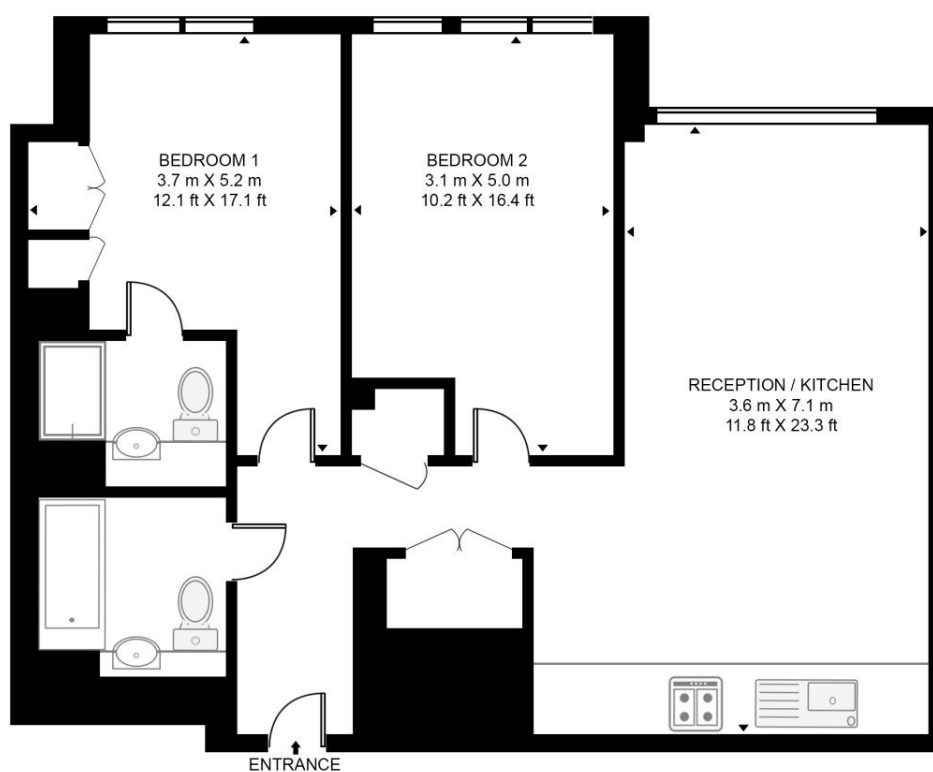
- 2 Bedrooms
- 2 Bathrooms
- Private Balcony
- On-site amenities including cinema, gym and resident's lounge
- 24 hour concierge
- 0.3 miles from Whitechapel Station
- Approx. 765 sq ft (71 sq m)
- Furnished
- EPC: B
- Council tax: Band F

Floorplan

765 sq ft | 71 sq m

THE BOUCHON

APPROXIMATE GROSS INTERNAL FLOOR AREA 765 SQ.FT (71.1 SQ.M)



FOURTH FLOOR



This floor plan has been defined by the RICS Code of Measurement. This floor plan and all others are for approximate representative purposes only and upon usage is agreed to as such by the client.

WWW: hdvirtualart.com | TEL: 0203.974.1567 | EMAIL: info@hdvirtualart.com

City
25 Walbrook The Walbrook
Building,
London EC4N 8AF
+4420 7337 4000

Urban living, your way.

jll.co.uk/residential

© 2019 Jones Lang LaSalle IP, Inc. All rights reserved. All information contained herein is from sources deemed reliable; however, no representation or warranty is made to the accuracy thereof.

