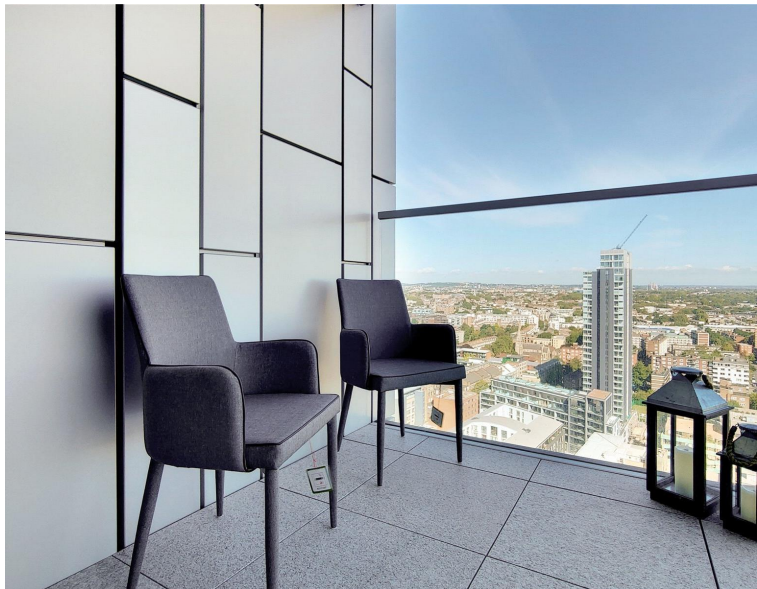
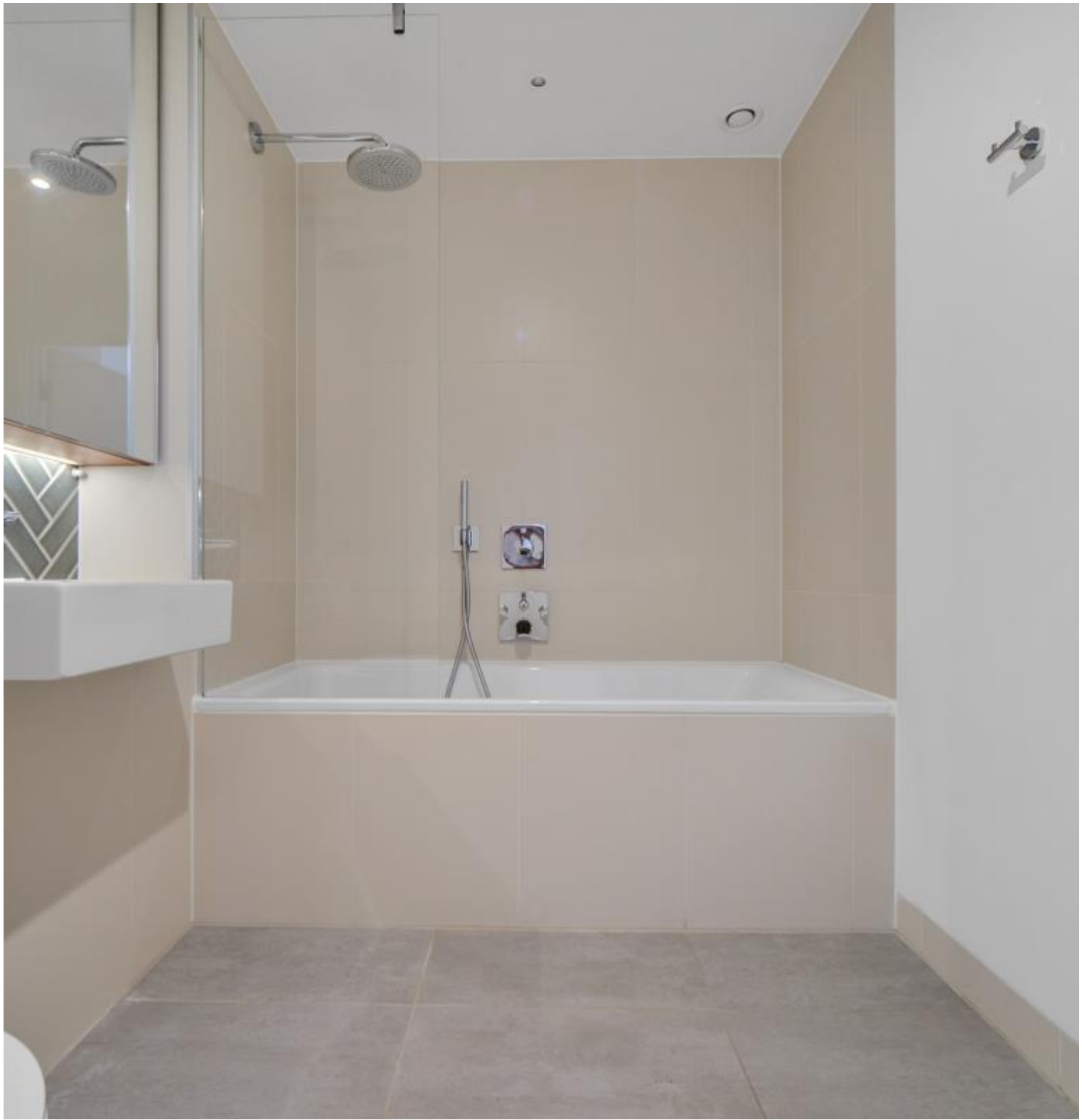


City Road, London EC1V

Price £765 per week - Furnished







Description

A stunning, fully furnished, 22nd floor 1 bedroom apartment in the Atlas Building, situated next to Old Street. EC1

This spacious 1 bedroom apartment is furnished to a high standard and offers approximately 585 sq. ft. of living space. The apartment comprises a large open plan reception with fully fitted kitchen, large West facing balcony with stunning views towards the City skyline, bedroom with large fitted wardrobe, luxury bathroom with Porcelain finish and solid wood flooring.

The Atlas Building is next to Old Street station (0.1 mile) and ideally situated for the City, Hoxton, Shoreditch and Angel. The development offers top of the range amenities which includes pool, spa, gymnasium, private cinema room, resident's only business lounge and 24 hour concierge.

We understand that cooling / heating is delivered via a communal system for which separate charges apply.

Rent is payable on a monthly basis and you may be required to pay more than a month's rent in advance, depending on your circumstances. You will be required to pay a 1 week holding deposit following a successful offer. Utility bills, council tax, telephone line and broadband are not included in the rent.

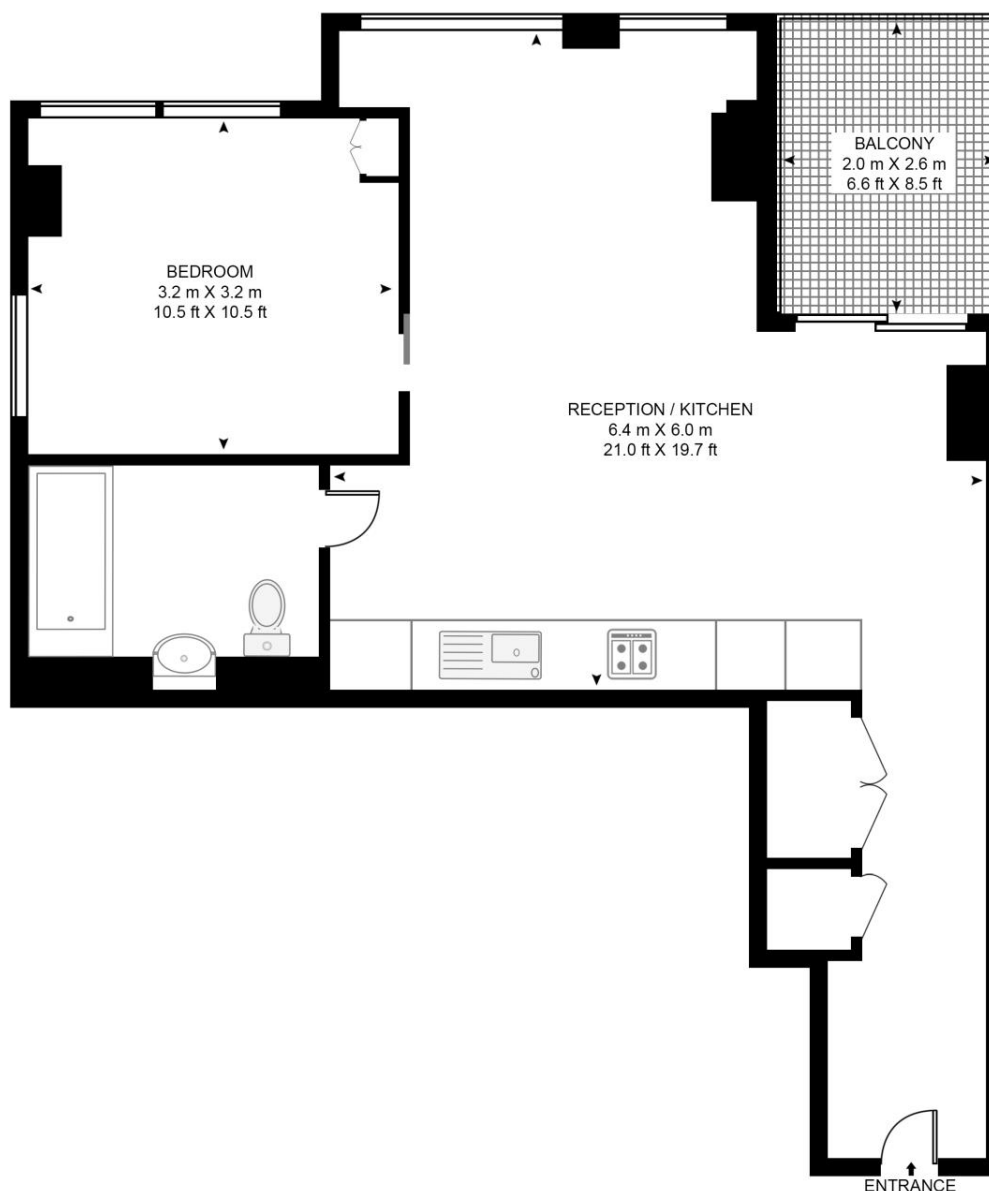
- 1 Bedroom
- 1 Bathroom
- 22nd floor
- Private balcony
- On-site leisure facilities including pool, spa and cinema
- 24 hour concierge
- 0.1 miles from Old Street Station
- Approx. 585 sq ft (54.4 sq m)
- Furnished
- EPC: B

Floorplan

585 sq ft | 54 sq m

ATLAS BUILDING

APPROXIMATE GROSS INTERNAL FLOOR AREA 585 SQ.FT (54.4 SQ.M)



TWENTY SECOND FLOOR



This floor plan has been defined by the RICS Code of Measurement. This floor plan and all others are for approximate representative purposes only and upon usage is agreed to as such by the client.

WWW: hdvirtualart.com | TEL: 0203.974.1567 | EMAIL: info@hdvirtualart.com

City
25 Walbrook The Walbrook
Building,
London EC4N 8AF
+4420 7337 4000

Urban living, your way.

jll.co.uk/residential

© 2019 Jones Lang LaSalle IP, Inc. All rights reserved. All information contained herein is from sources deemed reliable; however, no representation or warranty is made to the accuracy thereof.

