

Avantgarde Place, London E1

£600,000 Leasehold







Description

Set on the 15th floor, and extending to a well-proportioned 529 sq ft of living space, and separate balcony, this one-off apartment has flowing natural light throughout, and offers a bright aspect open plan style reception room with extensive views across this popular location.

The principal bedroom suite offers its own private balcony and built-in wardrobes. The family bathroom is located off a welcoming hallway.

Residents of this modern development benefit from 24-hour concierge, well-manicured communal grounds, gym facilities and residents lounge.

Based in the stylish hub of Shoreditch, Avantgarde Tower is in Zone 1, a short walk from both Spitalfields and the City of London.

Leasehold 984 years (exp. 31/12/3009)

Ground Rent: Approx. £150 pa

Service Charge: Approx. £5,500 pa

Council Tax Band: D

EPC Rating: C

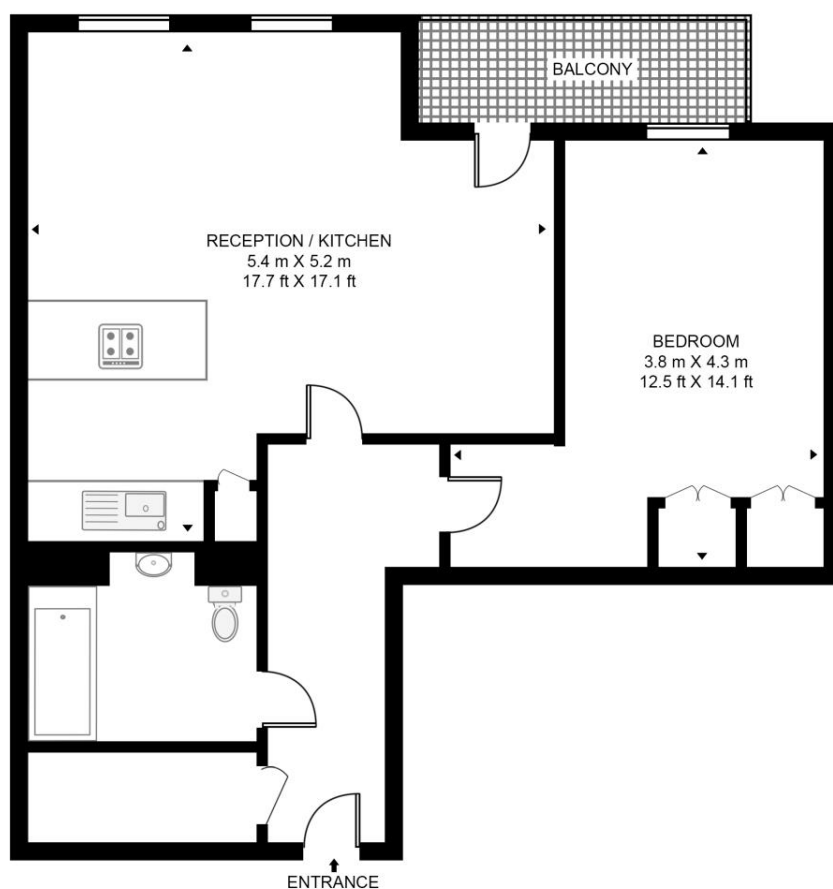
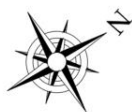
- 15th Floor with far reaching views
- 1 Bedroom
- 1 Bathroom
- Private balcony with panoramic views
- Well-proportioned throughout
- 24hr concierge
- Lift
- Residents Gym and Lounge
- Located in the heart of Shoreditch
- Approx. 529 sq ft / 49.2 sq m

Floorplan

529 sq ft | 49 sq m

AVANTGARDE TOWER, AVANTGARDE PLACE

APPROXIMATE GROSS INTERNAL FLOOR AREA 529 SQ.FT (49.2 SQ.M)



FIFTEENTH FLOOR



This floor plan has been defined by the RICS Code of Measurement. This floor plan and all others are for approximate representative purposes only and upon usage is agreed to as such by the client.
WWW: hdvirtualart.com | TEL: 0203.974.1567 | EMAIL: info@hdvirtualart.com

City
25 Walbrook The Walbrook
Building,
London EC4N 8AF
+4420 7337 4000

Urban living, your way.

jll.co.uk/residential

© 2019 Jones Lang LaSalle IP, Inc. All rights reserved. All information contained herein is from sources deemed reliable; however, no representation or warranty is made to the accuracy thereof.

