

Triptych Place, London SE1

Price £1,325 per week - Furnished







Description

Situated in the prestigious Eastern Building on South Bank, this sophisticated two-bedroom apartment offers an unparalleled lifestyle experience in one of London's most vibrant cultural quarters. The contemporary residence features expansive floor-to-ceiling windows that flood the open-plan living spaces with natural light, creating an atmosphere of modern elegance and comfort.

TWO WEEKS RENT FREE*

*Terms and conditions apply

The thoughtfully designed accommodation comprises a stylish reception room flowing seamlessly into a well-appointed kitchen with premium integrated appliances, complemented by two generous bedrooms and two sleek bathrooms. The highlight of this exceptional home is the large private balcony offering stunning views towards the iconic Tate Modern, providing a remarkable outdoor retreat where residents can enjoy the dynamic energy of this world-renowned arts district.

Residents benefit from an impressive array of amenities including twenty-four hour concierge service, a private cinema for entertainment, an elegant residents lounge perfect for socialising, and beautifully landscaped communal gardens that provide a tranquil escape from city life. These premium facilities create a true sense of community and luxury living.

The South Bank location places residents at the heart of London's cultural landscape, with the Tate Modern, Shakespeare's Globe Theatre, and the vibrant Thames Path all moments away. Borough Market offers an exceptional array of artisan food and produce, while the area's renowned restaurants and bars provide endless dining and entertainment options.

Excellent transport connections are provided by London Bridge and Borough stations, offering swift access throughout the capital and making this an ideal base for professionals seeking the perfect balance of cultural richness and urban convenience.

Council tax band: F. Rent is payable on a monthly basis and you may be required to pay more than a month's rent in advance, depending on your circumstances. You will be required to pay a 1 week holding deposit following a successful offer. Utility bills, council tax, telephone line and broadband are not included in the rent. As well as paying the rent, you may also be required to make some additional permitted payments. If your tenancy does not qualify as an AST, additional fees may apply. Please visit jll.co.uk/fees for details of fees that may be payable when renting a property. To check broadband and mobile phone coverage please visit Ofcom here ofcom.org.uk/phones-telecoms-and-internet/advice-for-consumers/advice/ofcom-checker

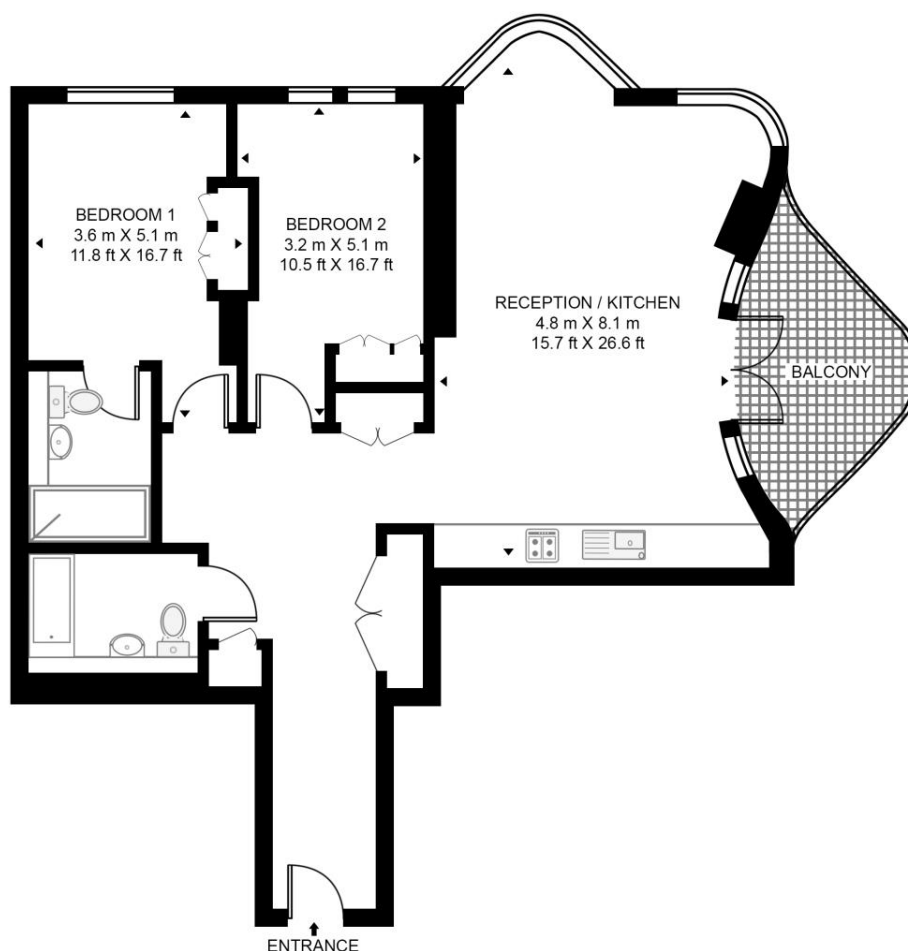
- 2 bedrooms
- 2 bathrooms (1 en-suite)
- 2nd floor
- Large fitted wardrobes
- Comfort cooling & underfloor heating
- 24-hour concierge
- Private residents garden, cinema, lounge and workspace
- 0.7 miles from London bridge station
- Approx 1,125 sq ft.
- Fully furnished

Floorplan

1,125 sq ft | 105 sq m

TRIPTYCH BUILDING, 185 PARK STREET

APPROXIMATE GROSS INTERNAL FLOOR AREA 1125 SQ.FT (104.5 SQ.M)



SECOND FLOOR



This floor plan has been defined by the RICS Code of Measurement. This floor plan and all others are for approximate representative purposes only and upon usage is agreed to as such by the client.
WWW: hdvirtualart.com | TEL: 0203.974.1567 | EMAIL: info@hdvirtualart.com

City
25 Walbrook The Walbrook
Building,
London EC4N 8AF
+4420 7337 4000

Urban living, your way.

jll.co.uk/residential

© 2019 Jones Lang LaSalle IP, Inc. All rights reserved. All information contained herein is from sources deemed reliable; however, no representation or warranty is made to the accuracy thereof.

