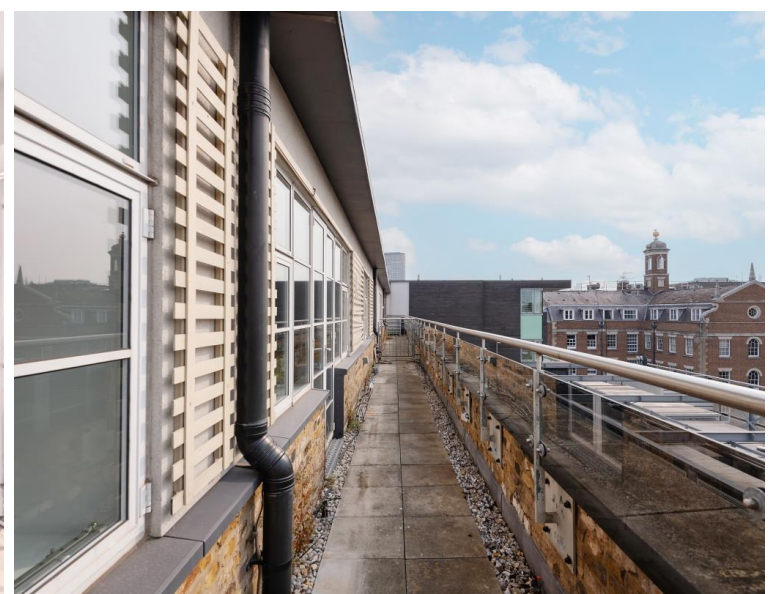




Marshall Street, London W1F
£1,950,000 Leasehold







Description

Bathed in natural light, this exceptional duplex penthouse showcases contemporary elegance throughout, with a refined open- reception room, kitchen and dining area, stylish bathrooms, and well-proportioned living spaces that perfectly balance modern sophistication with practical design. The thoughtfully planned layout spans over 1180 sqft, across two floors, featuring the living space, a principal bedroom suite and a further bedroom, complemented by integrated storage solutions and a private terrace.

Set in the dynamic Soho district with superb transportation options, coffee houses, retail establishments, and cultural attractions within easy reach, Marshall Street provides both convenience, luxury and leisure. Positioned in the heart of where Mayfair meets Soho, residents benefit from proximity to Oxford, Regent and Carnaby Streets' outstanding shopping venues, world-class dining, and entertainment options.

Leasehold 232 years (exp. 27/07/2258)
Ground Rent: Approx. £500 pa
Service Charge: Approx. £10,000 pa
Council Tax Band: G
EPC Rating: C

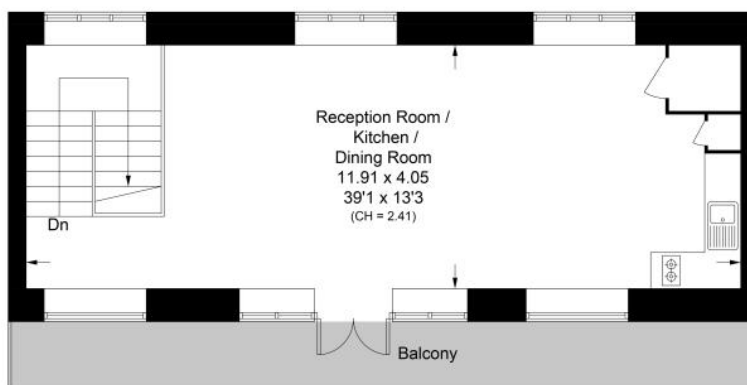
- Duplex apartment
- 2 Double bedrooms
- 2 Bathrooms
- Good-sized private terrace with roof top views
- Open-plan reception, kitchen and dining area with contemporary finishes
- Prime Soho location on Marshall Street in the heart of the West End
- Walking distance to Oxford Street, Regent Street and Carnaby Street shopping
- Surrounded by attractions including world-class restaurants, theatres and bars
- Approx. 1180 sqft / 109.6 sq m

Floorplan

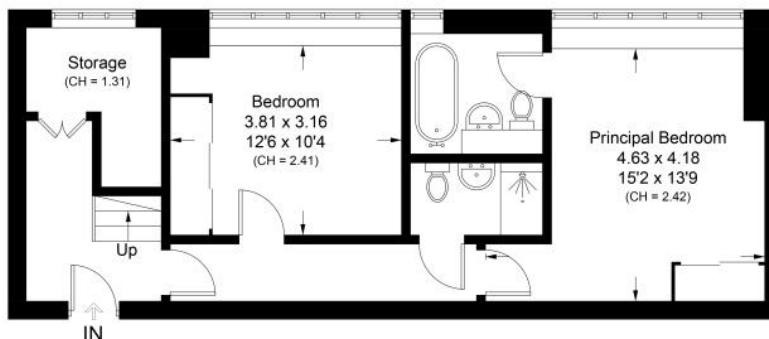
1,180 sq ft | 110 sq m

Marshall Street, W1F

Approximate Area = 109.6 sq m / 1180 sq ft
Including Limited Use Area (7.2 sq m / 77 sq ft)



Fourth Floor



Third Floor

Surveyed and drawn in accordance with the International property measurements standards (IPMS 2: Residential) Not drawn to scale unless stated.
Whilst every care is taken in the preparation of this plan, please check all dimensions, shapes and compass bearings before making any decisions reliant upon them.