

# Queen's Gate

LONDON SW7









A truly impressive flat situated on the ground and first floors of a Grade II. listed building which forms part of an imposing stucco fronted mid-Victorian terrace built on land purchased for the Great Exhibition In 1855. The flat occupies the principal levels of the original house and as such, has wonderfully voluminous rooms with high-ceilings, French windows and a balcony overlooking the boulevard. It is moments' walk to Hyde Park / Kensington Gardens and is blessed with all the shopping and transport facilities of Knightsbridge and Kensington being equidistant from them both.

### Accommodation

- Grade II listed period building
- 3 Double Bedrooms
- 3 Bathrooms (en-suites) plus guest WC
- Cloakroom
- Independent gas central heating and hot water
- Approx. 2155 sq ft / 200 sq m
- Hyde Park within 120 yards
- Royal Albert Hall within 360 yards
- South Kensington Station within 0.5 miles

### Terms

Price: £4,250,000

Leasehold – 979 years (exp. 6/11/3005)  
plus the Share in the Freehold

Ground Rent: Peppercorn

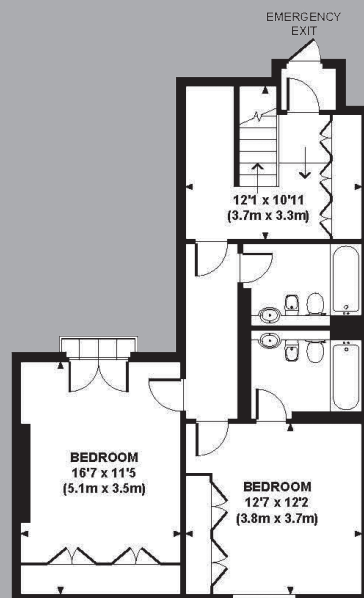
Service Charge: £4,743.14 for half year to 24/12/25

Council tax band H

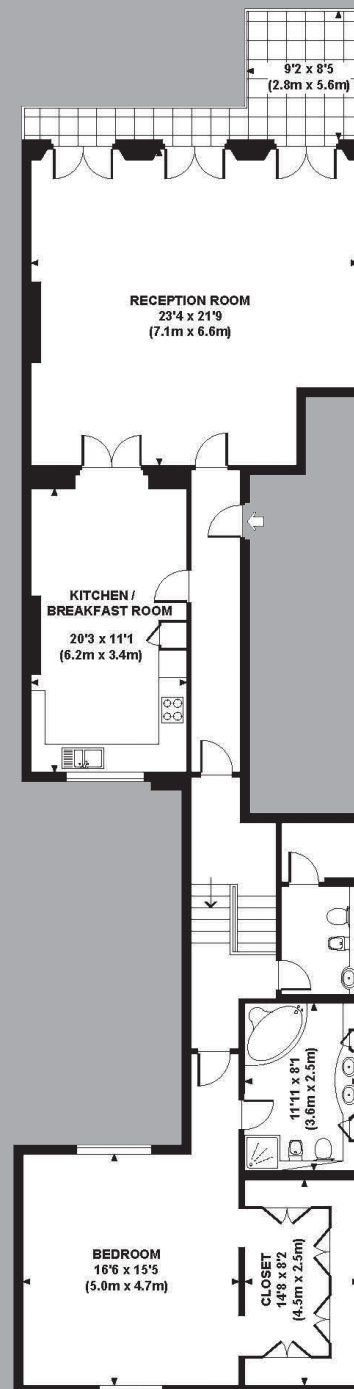
EPC: D



Gross Internal Area (Approx.)  
200 Sq M – 2,155 Sq Ft



Ground Floor



First Floor



JLL Chelsea & Knightsbridge

2 Cale Street,

London, SW3 3QU

020 7306 1610