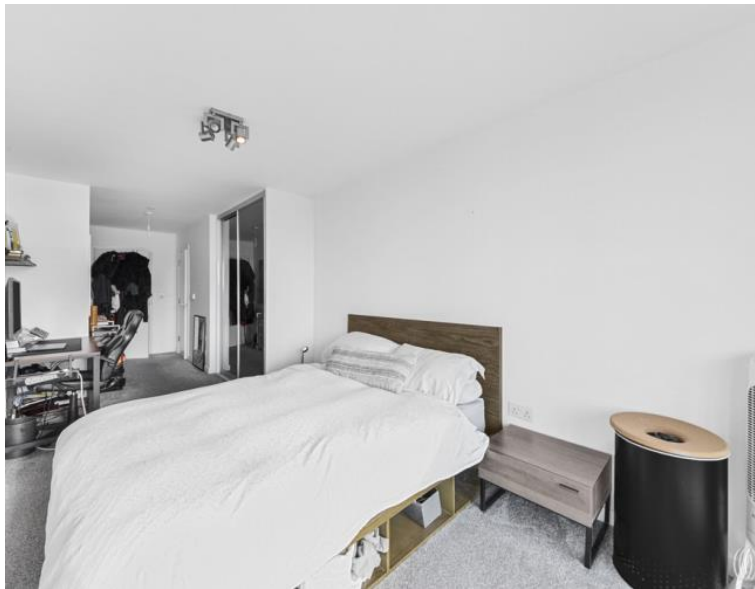


Station Street, London E15

£635,000 Leasehold







Description

Positioned within the distinguished Unex Tower, this exceptional two-bedroom apartment offers contemporary urban living at its finest in the heart of Stratford's dynamic regeneration. The development's impressive architecture and comprehensive amenities create an enviable residential environment for discerning buyers seeking both luxury and convenience.

This immaculately maintained apartment showcases ultra-modern design throughout, with abundant natural light flooding the spacious living areas. The generously proportioned accommodation comprises two double bedrooms, including a master suite with ensuite bathroom. The open-plan living area seamlessly integrates with a fully fitted kitchen featuring integrated appliances, creating an ideal entertaining space. Thoughtful design extends to ample storage solutions throughout the property.

The apartment's standout feature is its impressive winter garden, offering captivating views of Stratford City's ever-evolving skyline while providing a versatile space perfect for remote working or relaxation. The elevated position ensures abundant natural light and an inspiring outlook over this transformative urban landscape.

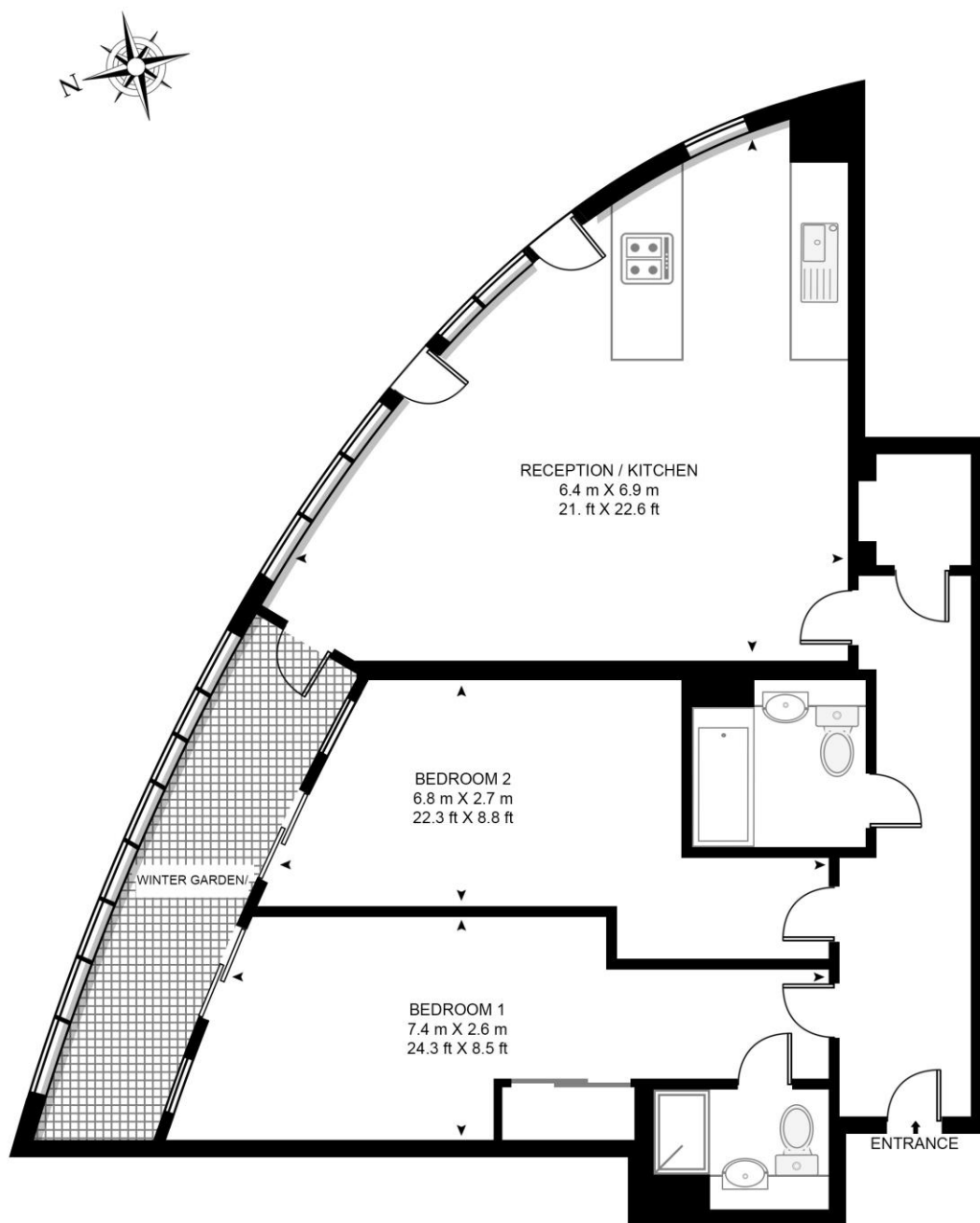
- Two bedrooms
- Two bathrooms (one en-suite)
- Lift access
- 19th floor
- 24h Concierge
- Communal roof terrace
- Winter garden
- Approx. 1059 sq. ft (98.4 sq. m)
- 0.1 mile from Stratford Station
- EPC Rating B

Floorplan

1,059 sq ft | 98 sq m

UNEX TOWER

APPROXIMATE GROSS INTERNAL FLOOR AREA 1059 SQ.FT (98.4 SQ.M)



This floor plan has been defined by the RICS Code of Measurement. This floor plan and all others are for approximate representative purposes only and upon usage is agreed to as such by the client.

WWW: hdvirtualart.com | TEL: 0203.974.1567 | EMAIL: info@hdvirtualart.com

Stratford
5 Station Street,
London E15 1DA
+4420 3147 1500
Lettingsstratford@eu.jll.com

Urban living, your way.

jll.co.uk/residential

© 2019 Jones Lang LaSalle IP, Inc. All rights reserved. All information contained herein is from sources deemed reliable; however, no representation or warranty is made to the accuracy thereof.

