



Inverness Terrace, London W2

£995,000 Share of Freehold







Description

Set on the 4th floor and extending to a well-proportioned 692 sq ft of thoughtfully refurbished living space, this picturesque apartment offers a bright West-facing open style reception room, good-sized bedroom with fitted wardrobes and impressive bathroom suite.

This prime property is situated on the southern end of Inverness Terrace, near Hyde Park's open spaces. The area boasts a variety of local amenities, including boutique shops, cafes, and restaurants in Westbourne Grove. Excellent transport links are available, with Bayswater and Queensway stations offering access to multiple Underground lines, and Paddington providing connections to the Heathrow Express and Elizabeth line. The ongoing redevelopment of Queensway is set to further enhance this desirable location.

Share of freehold 977 years (exp. 31/12/3002)
Service Charge: Approx. £4,100 pa
Council Tax Band: F
EPC Rating: C

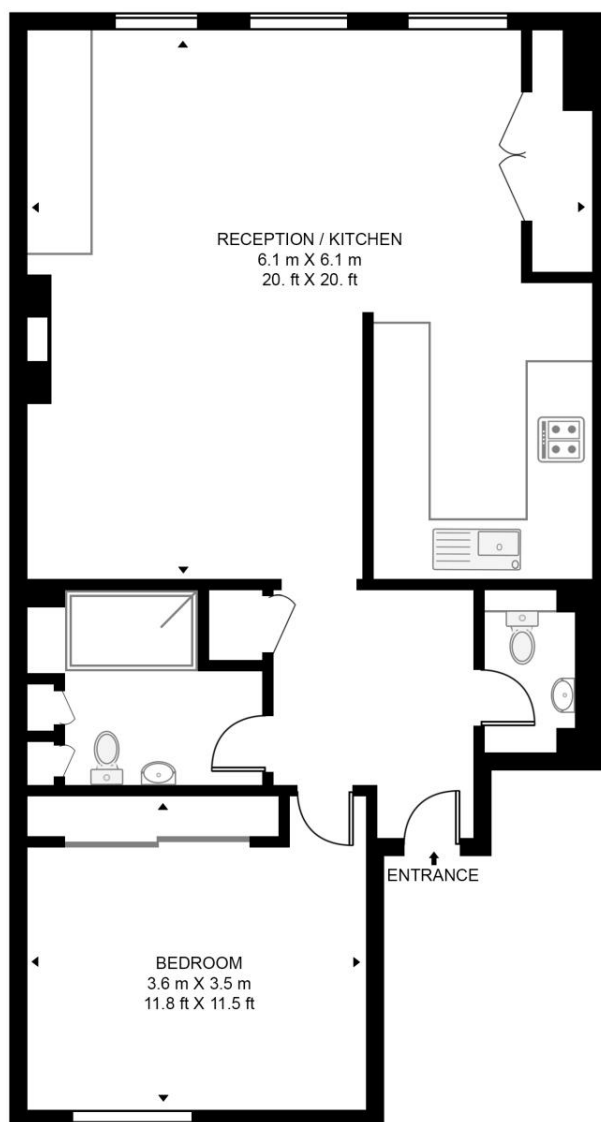
- 4th floor apartment
- 1 Double bedroom
- 1 Bathroom plus guest WC
- West-facing reception room
- Flowing natural light
- Wonderfully refurbished throughout
- Ideally located for Hyde Park (within 400 yards)
- Lift access
- Picturesque Grade II Listed Stucco fronted building
- Approx. 692 sq ft / 64.3 sq m

Floorplan

692 sq ft | 64 sq m

INVERNESS TERRACE

APPROXIMATE GROSS INTERNAL FLOOR AREA 692 SQ.FT (64.3 SQ.M)



FOURTH FLOOR



This floor plan has been defined by the RICS Code of Measurement. This floor plan and all others are for approximate representative purposes only and upon usage is agreed to as such by the client.
WWW: hdvirtualart.com | TEL: 0203.974.1567 | EMAIL: info@hdvirtualart.com

Mayfair and Marylebone
St George Street,
London W1S 2FQ
+44 207 399 5550
mayfair@jll.com

Urban living, your way.

jll.co.uk/residential

© 2019 Jones Lang LaSalle IP, Inc. All rights reserved. All information contained herein is from sources deemed reliable; however, no representation or warranty is made to the accuracy thereof.

