

Avantgarde Place, London E1

Price £815 per week - Furnished







Description

A stunning 2 bedroom apartment in the ever popular Avantgarde development, in the heart of Shoreditch.

Situated on the 11th floor and offering approximately 781 sq. ft. of living space, this rarely available 2 bedroom apartment comprises of a spacious open plan reception/dining area, kitchen with Siemens appliances, private balcony with stunning South Eastern views of the City skyline and towards Canary Wharf, master bedroom featuring access to a private balcony and fitted wardrobes and en suite shower room, second double bedroom with fitted wardrobes, contemporary Roca bathroom, wood veneer flooring and excellent storage.

The development benefits from onsite leisure facilities including a gym, residents lounge, rooftop courtyard and 24 hour concierge. Based in the stylish hub of Shoreditch, the development is located in Zone 1 and approximately 0.1 mile from Shoreditch station.

We understand that cooling / heating is delivered via a communal system for which separate charges apply.

Rent is payable on a monthly basis and you may be required to pay more than a month's rent in advance, depending on your circumstances. You will be required to pay a 1 week holding deposit following a successful offer. Utility bills, council tax, telephone line and broadband are not included in the rent. As well as paying the rent, you may also be required to make some additional permitted payments. If your tenancy does not qualify as an AST, additional fees may apply. Please visit jll.co.uk/fees for details of fees which may be payable when renting a property.

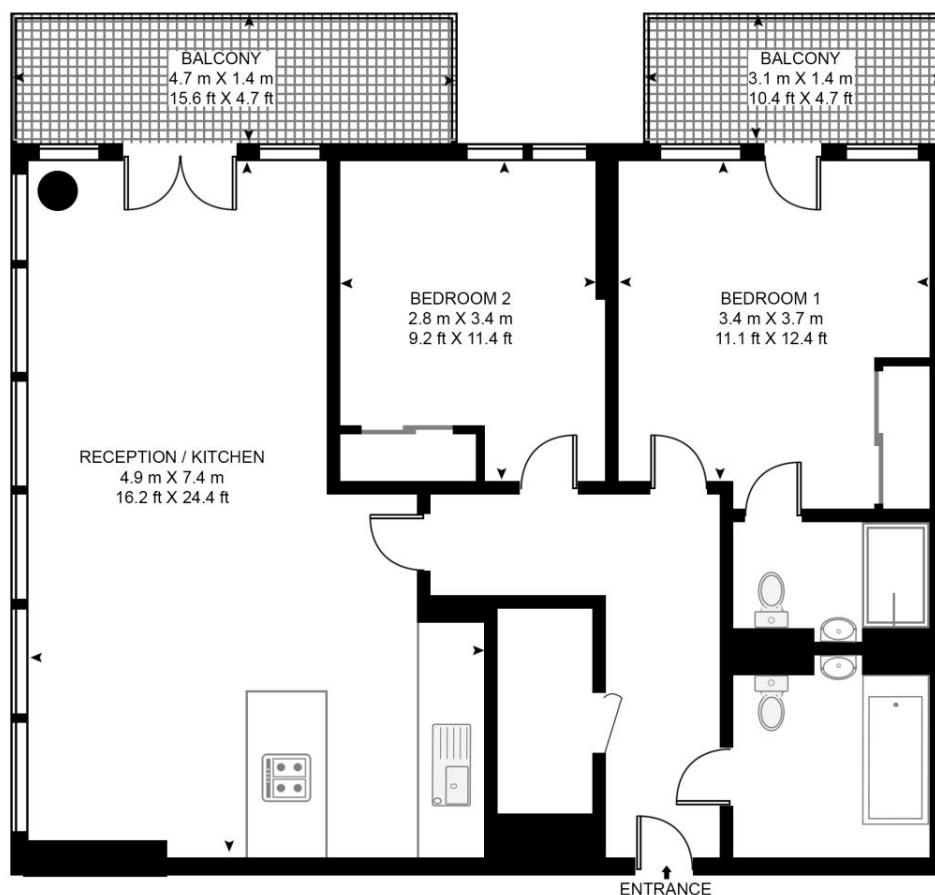
- 2 Bedrooms
- 2 Bathrooms
- 2 Private balconies
- On-site leisure facilities
- 24 hour concierge
- 0.1 miles from Shoreditch Station
- Approx. 772 sq ft (71.7 sq m)
- EPC: B
- Council tax: Band E
- Deposit amount: £4,075.00 (estimate) and an initial holding deposit of 1 week's rent is

Floorplan

772 sq ft | 72 sq m

AVANTGARDE TOWER, AVANTGARDE PLACE

APPROXIMATE GROSS INTERNAL FLOOR AREA 772 SQ.FT (71.7 SQ.M)



ELEVENTH FLOOR

HDVA

This floor plan has been defined by the RICS Code of Measurement. This floor plan and all others are for approximate representative purposes only and upon usage is agreed to as such by the client.

WWW: hdvirtualart.com | TEL: 0203.974.1567 | EMAIL: info@hdvirtualart.com

City
25 Walbrook The Walbrook
Building,
London EC4N 8AF
+4420 7337 4000

Urban living, your way.

jll.co.uk/residential

© 2019 Jones Lang LaSalle IP, Inc. All rights reserved. All information contained herein is from sources deemed reliable; however, no representation or warranty is made to the accuracy thereof.

