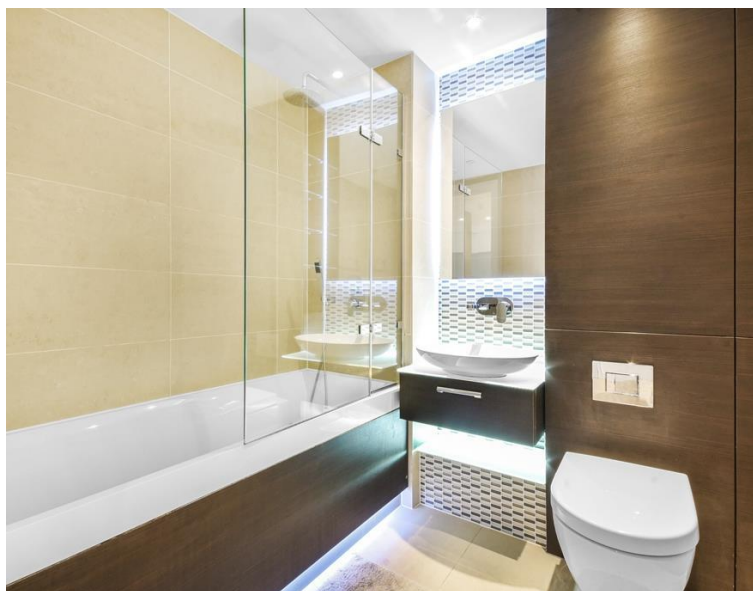
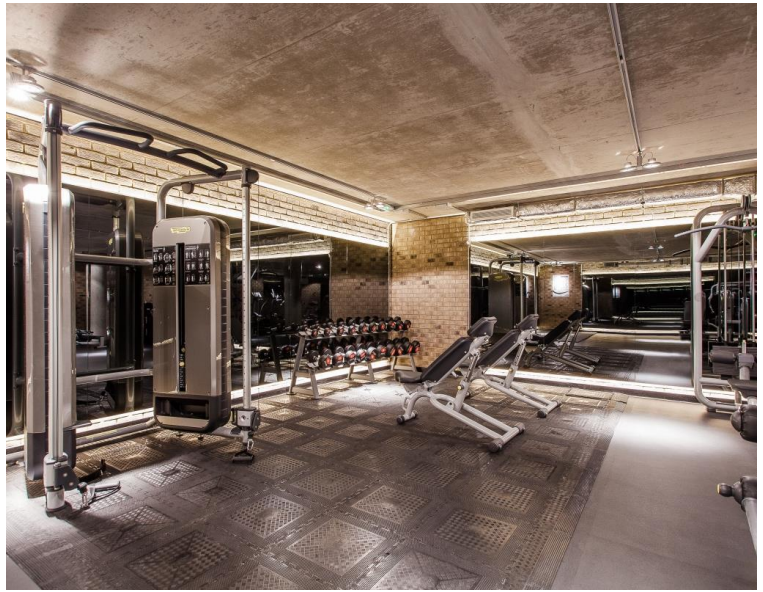




Commercial Street, London E1
£400,000 Leasehold







Description

A luxury studio apartment in the prestigious Cityscape development.

This exquisite sixth-floor studio apartment offers approximately 419 square feet of thoughtfully designed living space. The bright, open-plan living and sleeping area flows seamlessly onto a generous south-facing balcony, perfect for enjoying natural light throughout the day. The residence features sophisticated contemporary finishes, including a fully-fitted kitchen, elegant bathroom with premium porcelain and glass tiling, and beautiful wooden flooring. Floor-to-ceiling windows maximize both natural light and stunning views, while large fitted wardrobes and clever storage solutions ensure optimal functionality. Perfectly positioned just moments from the City of London in coveted Zone 1, the apartment sits merely 0.1 miles from Aldgate East station. Residents enjoy an elevated lifestyle with 24-hour concierge service and access to a fully-equipped on-site gym. Experience refined urban living where style meets convenience in one of London's most sought-after developments.

Leasehold 985 years (exp. 29/12/3010)
Ground Rent: Approx. £200 pa
Service Charge: Approx. £3,311 pa
Council Tax Band: D

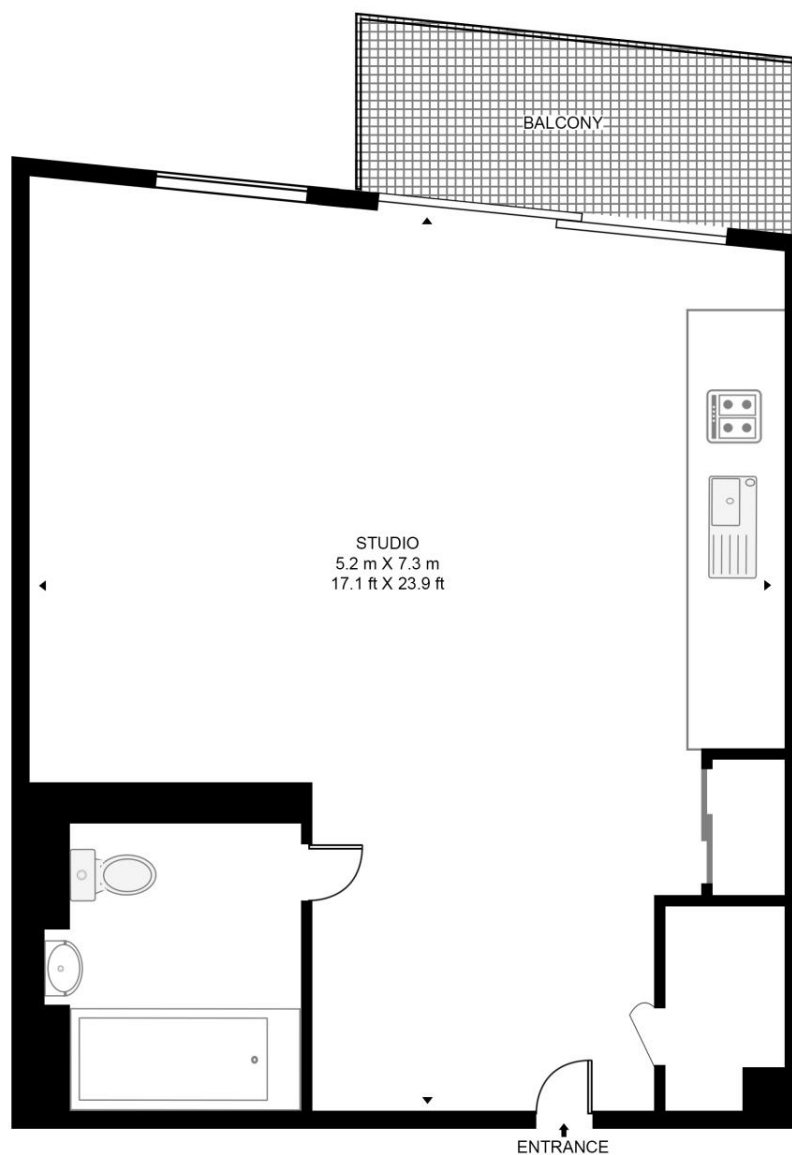
- Elegant Studio Apartment
- Modern Bathroom
- 6th floor
- South-Facing Balcony
- State of the art Gymnasium
- 24 Hour concierge
- 0.1 mile from Aldgate East station
- Approx. 419 sq ft / 38.9 sq m

Floorplan

419 sq ft | 39 sq m

KENSINGTON APARTMENTS

APPROXIMATE GROSS INTERNAL FLOOR AREA 419 SQ.FT (38.9 SQ.M)



SIXTH FLOOR



This floor plan has been defined by the RICS Code of Measurement. This floor plan and all others are for approximate representative purposes only and upon usage is agreed to as such by the client.

WWW: hdvirtualart.com | TEL: 0203.974.1567 | EMAIL: info@hdvirtualart.com

City
25 Walbrook The Walbrook
Building,
London EC4N 8AF
+4420 7337 4000

Urban living, your way.

jll.co.uk/residential

© 2019 Jones Lang LaSalle IP, Inc. All rights reserved. All information contained herein is from sources deemed reliable; however, no representation or warranty is made to the accuracy thereof.

