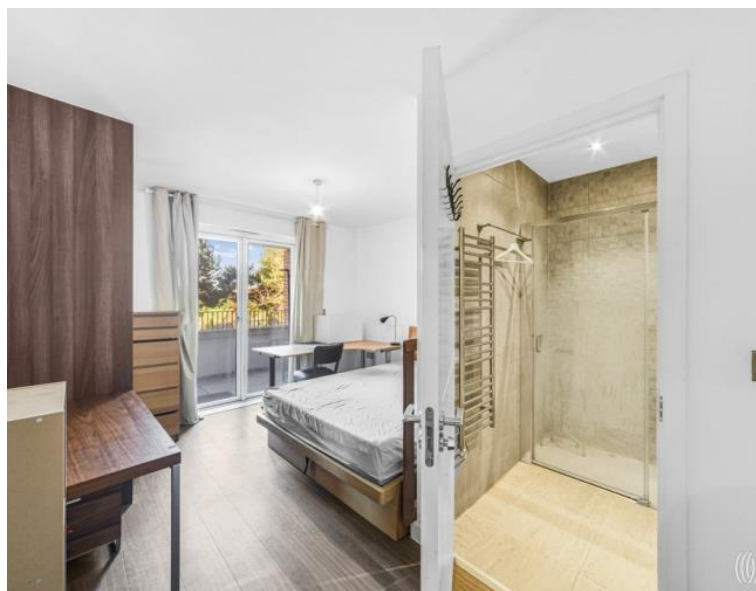


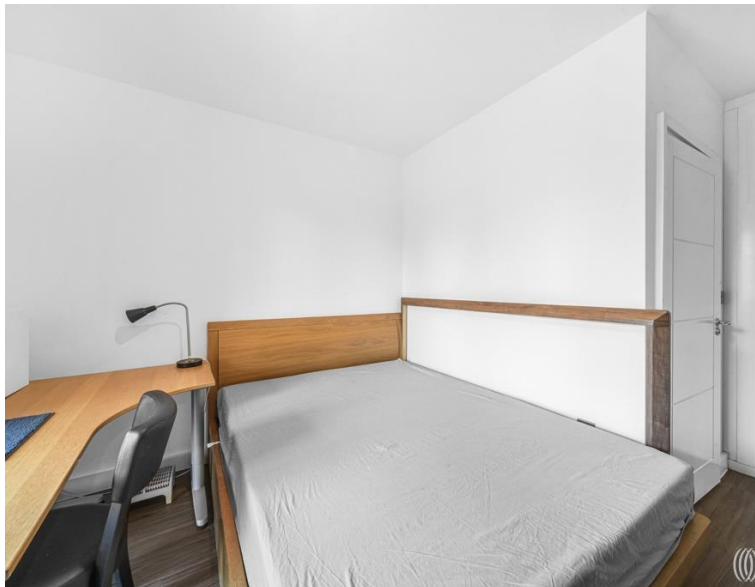


Olympic Park Avenue, London E20

£925,000 Leasehold







Description

Situated within the prestigious Chobham Manor development, this exceptional split-level apartment offers a rare opportunity to acquire a sophisticated family home directly opposite the world-renowned Queen Elizabeth Olympic Park. The development's exclusive position provides residents with an unparalleled lifestyle, combining the tranquility of parkland views with the vibrancy of one of London's most dynamic regeneration areas.

This stunning three double bedroom apartment spans close to 1,600 square feet across two thoughtfully designed floors. The ground floor welcomes you through a spacious entrance hall with generous storage solutions and guest cloakroom, flowing seamlessly into a separate kitchen and dining area. The ultra-modern kitchen features premium integrated appliances and contemporary finishes, creating an ideal space for both everyday living and entertaining. The first floor houses three double bedrooms, each benefiting from abundant natural light, with the master bedroom featuring its own ensuite facility. Two of the bedrooms enjoy private balconies with captivating views across the Olympic Park, while the family bathroom provides a luxurious retreat with full tiling throughout.

- Three double bedrooms
- Three bathrooms
- Split-level apartment design
- Two Olympic Park facing balconies
- South-facing private terrace
- Exclusive Chobham Manor
- Westfield and Stratford station walking distance
- Approx. 1540 sq. ft (143.1 sq. m)
- EPC Rating B

Floorplan

1,540 sq ft | 143 sq m

PARK VIEW MANSIONS

APPROXIMATE GROSS INTERNAL FLOOR AREA 1540 SQ.FT (143.1 SQ.M)



GROUND FLOOR

FIRST FLOOR



This floor plan has been defined by the RICS Code of Measurement. This floor plan and all others are for approximate representative purposes only and upon usage is agreed to as such by the client.

WWW: hdvirtualart.com | TEL: 0203.974.1567 | EMAIL: info@hdvirtualart.com

Stratford
5 Station Street,
London E15 1DA
+4420 3147 1500
Lettingsstratford@eu.jll.com

Urban living, your way.

jll.co.uk/residential

© 2019 Jones Lang LaSalle IP, Inc. All rights reserved. All information contained herein is from sources deemed reliable; however, no representation or warranty is made to the accuracy thereof.

