



## Michael Road, London SW6

Price £675 per week - Unfurnished









## Description

Nestled in the heart of Fulham, this sophisticated one-bedroom apartment forms part of Hampton House, an exceptional residential development that redefines luxury living in SW6. The property benefits from a private balcony and enjoys access to some of London's finest resident-only facilities, creating an unparalleled lifestyle experience. Set within six acres of meticulously maintained landscaping that includes beautiful residents' gardens and public parkland, the development offers a tranquil retreat while maintaining excellent connectivity to central London.

The apartment provides contemporary living space designed for modern lifestyles, with the private balcony offering a perfect outdoor sanctuary. Residents enjoy exclusive access to world-class amenities including a swimming pool, fully equipped gymnasium, and dual cinema rooms for entertainment. The development's impressive facilities extend to a private kitchen area, games room, and capacious residents' lounge, all complemented by 24-hour concierge service ensuring security and convenience at all times.

Fulham's vibrant character surrounds this prestigious address, with the leafy streets and Victorian architecture creating an established neighbourhood atmosphere. The proximity to the River Thames and Bishop's Park provides additional green space and riverside walks, while the famous King's Road shopping district offers an array of boutiques, restaurants, and cultural attractions. The area strikes an ideal balance between residential tranquillity and urban sophistication.

Transport connections are excellent, with Parsons Green and Fulham Broadway stations providing swift access to central London and beyond. The location offers seamless connectivity for both business and leisure travel, while local bus routes enhance the comprehensive transport network. The neighbourhood's tree-lined streets and period properties create an attractive residential environment that appeals to discerning tenants seeking quality and convenience.

This exceptional apartment presents an ideal opportunity for those seeking flexible rental accommodation in one of London's most desirable postcodes, combining luxury amenities with the convenience of professional property management and the lifestyle benefits of premium Fulham living.

Council tax band: E. Rent is payable on a monthly basis and you may be required to pay more than a month's rent in advance, depending on your circumstances. You will be required to pay a 1 week holding deposit following a successful offer. Tenancies with annual rents up to £50,000 will require a 5 weeks' security deposit, while those exceeding this threshold will require a 6 weeks' deposit. Utility bills, council tax, telephone line and broadband are not included in the rent. As well as paying the rent, you may also be required to make some additional permitted payments. If your tenancy does not qualify as an AST, additional fees may apply. Please visit [jll.co.uk/fees](http://jll.co.uk/fees) for details of fees that may be payable when renting a property. To check broadband and mobile phone coverage please visit Ofcom here [ofcom.org.uk/phones-telecoms-and-internet/advice-for-consumers/advice/ofcom-checker](http://ofcom.org.uk/phones-telecoms-and-internet/advice-for-consumers/advice/ofcom-checker)

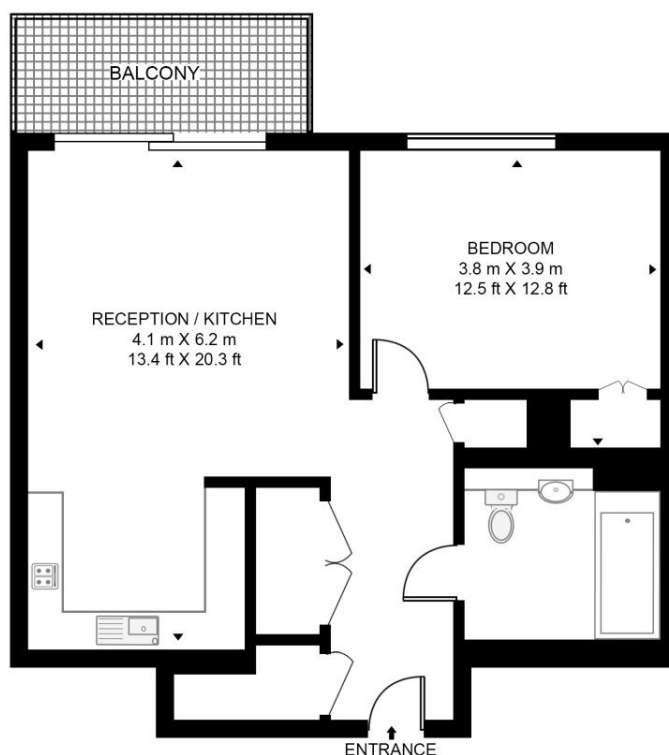
- Luxury one-bedroom apartment
- Private balcony space
- 24-hour concierge service
- Swimming pool access
- Gymnasium facilities
- Dual cinema rooms
- Residents' lounge available
- Six acres landscaping
- Games room included
- Golf simulator

# Floorplan

554 sq ft | 52 sq m

## HAMPTON HOUSE, 2 MICHAEL ROAD

APPROXIMATE GROSS INTERNAL FLOOR AREA 554 SQ.FT (51.5 SQ.M)



### SECOND FLOOR



This floor plan has been defined by the RICS Code of Measurement. This floor plan and all others are for approximate representative purposes only and upon usage is agreed to as such by the client.

WWW: [hdvirtualart.com](http://hdvirtualart.com) | TEL: 0203.974.1567 | EMAIL: [info@hdvirtualart.com](mailto:info@hdvirtualart.com)

Chelsea  
2 Cale Street,  
London SW3 3QU  
+4420 7399 5010  
[saleschelsea@jll.com](mailto:saleschelsea@jll.com)

*Urban living, your way.*

[jll.co.uk/residential](http://jll.co.uk/residential)

© 2019 Jones Lang LaSalle IP, Inc. All rights reserved. All information contained herein is from sources deemed reliable; however, no representation or warranty is made to the accuracy thereof.

