

Highland Street, London E15

£382,500 Leasehold







Description

Positioned within the sought-after Legacy Wharf development in Stratford, this contemporary one-bedroom apartment offers an exceptional blend of modern living and convenience. The development's architectural elegance is complemented by premium resident amenities including 24-hour concierge service, a well-equipped gymnasium, and beautifully maintained landscaped gardens that create a tranquil retreat from city life.

The apartment itself showcases thoughtful design with a spacious entrance hall featuring practical storage solutions, leading to well-proportioned living spaces. The large double bedroom benefits from built-in storage, maximising space efficiency, while the modern bathroom suite features quality tiling throughout. The heart of the home combines a fully fitted kitchen with integrated appliances and a bright living area that flows seamlessly onto a generous south-facing balcony, offering delightful canal views and abundant natural light throughout the day.

Stratford has transformed into one of East London's most dynamic neighbourhoods, perfectly balancing urban energy with green spaces.

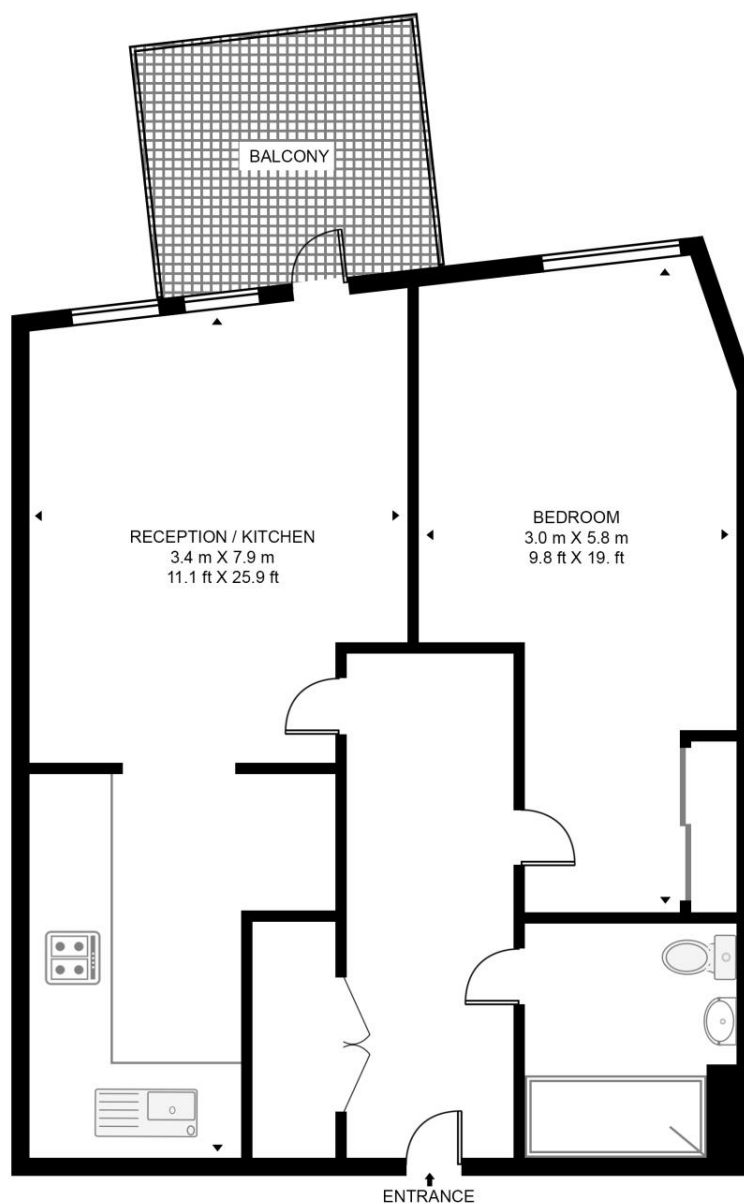
- One bedroom apartment
- Ultra modern throughout
- 4th Floor
- Balcony
- Canal views
- Approx. 548 sq. ft (50.9 sq. m)
- Residents' gym
- Landscaped gardens
- Concierge service
- EPC Rating B

Floorplan

548 sq ft | 51 sq m

SOUTHMERE HOUSE, HIGHLAND STREET

APPROXIMATE GROSS INTERNAL FLOOR AREA 548 SQ.FT (50.9 SQ.M)



FOURTH FLOOR



This floor plan has been defined by the RICS Code of Measurement. This floor plan and all others are for approximate representative purposes only and upon usage is agreed to as such by the client.

WWW: hdvirtualart.com | TEL: 0203.974.1567 | EMAIL: info@hdvirtualart.com

Stratford
5 Station Street,
London E15 1DA
+4420 3147 1500
Lettingsstratford@eu.jll.com

Urban living, your way.

jll.co.uk/residential

© 2019 Jones Lang LaSalle IP, Inc. All rights reserved. All information contained herein is from sources deemed reliable; however, no representation or warranty is made to the accuracy thereof.

