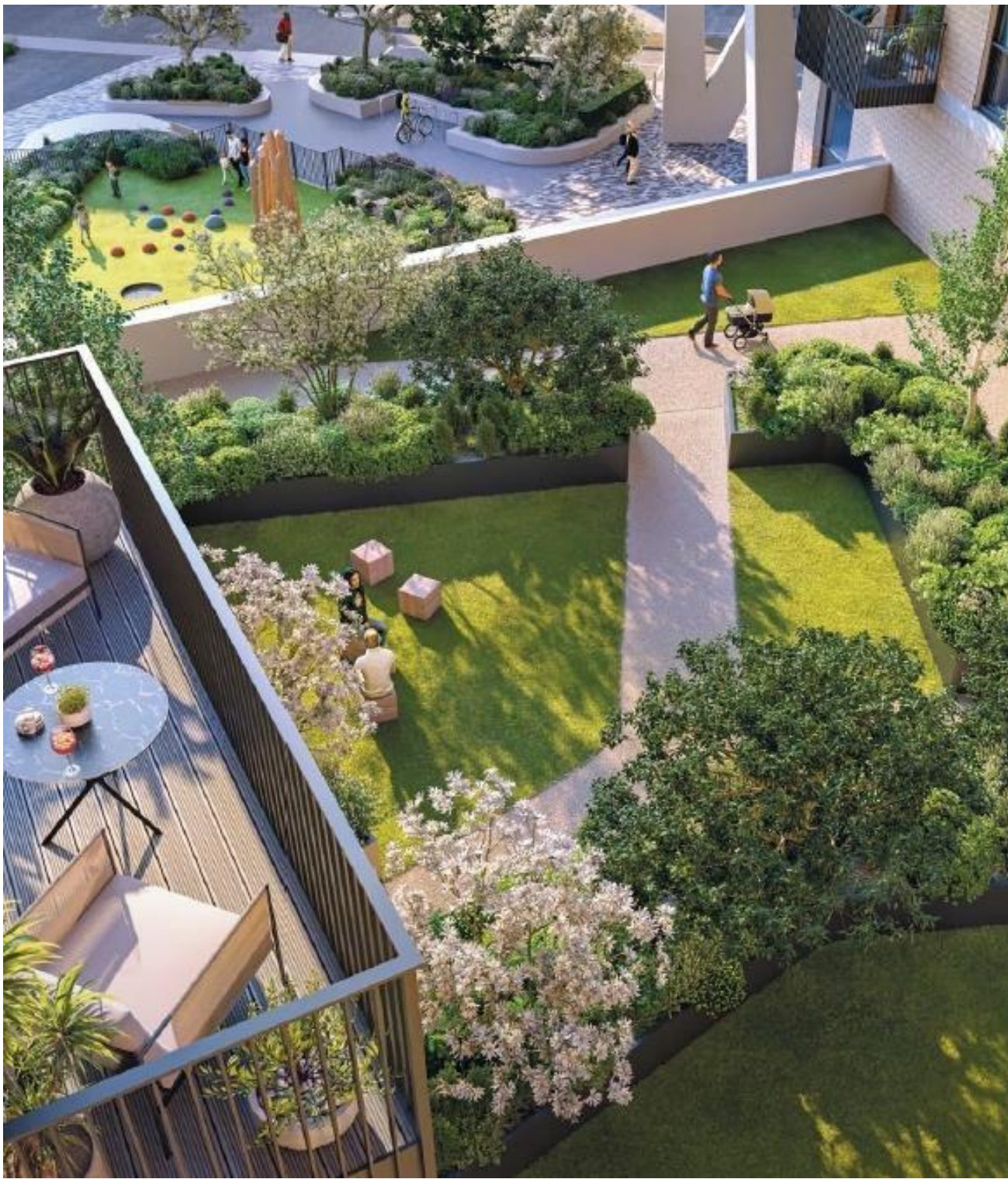




Pavana Square, Brentford TW8

Price £2,100 per month - Unfurnished





Description

This spacious one-bedroom apartment features an open-plan kitchen, dining, and living area that flows onto your private balcony—perfect for enjoying those stunning views across Kew Bridge and Chiswick.

Enjoy cooking? You'll love the contemporary kitchen with integrated appliances and sleek matt-finish units. The bedroom is a bright and airy retreat, complete with full-height windows leading to the balcony and a fitted wardrobe for easy storage.

The modern bathroom blends style and comfort with sleek white fixtures, matte black accents, and large format tiles. The full-size bath with a glass screen and overhead shower offers a relaxing retreat. A feature mirror cabinet with LED lighting and a heated towel rail add both functionality and luxury.

But it's not just the apartment that shines. Step outside and you're just a two-minute stroll from Kew Bridge Station, a quick 10-minute walk to Gunnersbury, and only moments away from the River Thames. Need more? The building offers a private state-of-the-art gym, innovative co-working spaces, meeting rooms, and an exclusive concierge service.

*Images are CGI and are for indicative purposes only.



- Open-plan kitchen/living/dining
- Private balcony with stunning views
- Fully integrated kitchen appliances
- Bedroom with fitted wardrobe
- Concierge services

Two minutes' walk to Kew Bridge Station

Private state of the art residents' gym

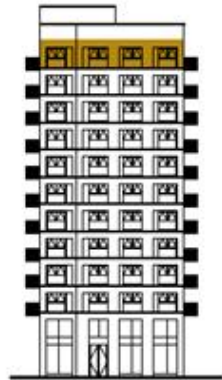
EPC: C

Council tax band: C

Floorplan

544 sq ft | 51 sq m

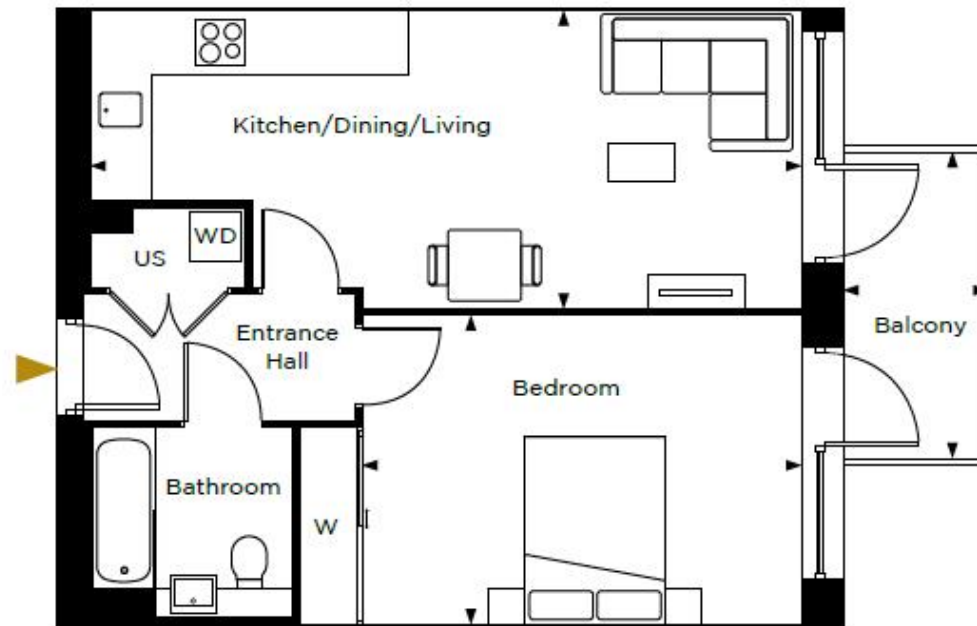
Floor 11



1 BEDROOM APARTMENT

Kitchen / Dining / Living	7.75m x 3.20m	25'5" x 10'7"
Bedroom	4.90m x 3.25m	16'0" x 10'7"
Balcony	1.55m x 3.30m	5'1" x 10'9"

Total size 544 sq ft



Views towards
River Thames

Kew Bridge
12 Capital Interchange Way,
London TW8 0SP
020 3147 1880
lettingskewbridge@jll.com

Urban living, your way.

jll.co.uk/residential

© 2019 Jones Lang LaSalle IP, Inc. All rights reserved. All information contained herein is from sources deemed reliable; however, no representation or warranty is made to the accuracy thereof.

