



Eastney Street, Greenwich, London, SE10 9NR



Eastney Street, Greenwich SE10

Freehold

Charming period cottage in the heart of Royal Greenwich, offering authentic character living with a private courtyard garden. Perfectly positioned for Greenwich Park, maritime heritage sites, and exceptional transport links into central London.

Key Features

- 2 Bedrooms, 1 Bathroom
 - Period cottage
 - In need for cosmetic updating
 - Council Tax: **D**
 - Excellent transport links
 - No onward chain
 - Private courtyard garden
 - EPC: **D**
-

This characterful two-bedroom cottage retains authentic period features that speak to its rich history, while offering comfortable living across well-proportioned rooms filled with natural light. The thoughtful layout maximizes the 708 square feet of space, creating a cozy yet practical home that celebrates both heritage and contemporary lifestyle needs.

The private rear courtyard garden provides a wonderful outdoor retreat, featuring a combination of paving and decking that creates distinct zones for relaxation and entertainment. This secluded space offers the perfect sanctuary for morning coffee or evening drinks, providing a rare luxury in such a central Greenwich location.

Transport connections are exemplary, with Cutty Sark DLR station and Greenwich railway station providing swift access to Canary Wharf, the City, and central London. The Thames Clipper service adds a scenic commuting option along the river, while major road networks ensure excellent connectivity across the capital



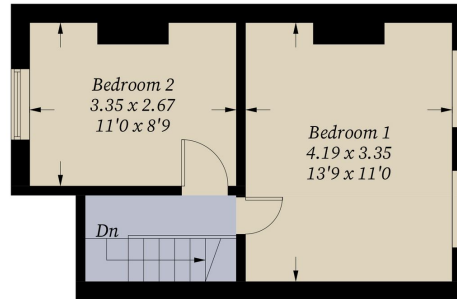






Eastney Street, SE10

Approximate Gross Internal Area = 65.8 sq m / 708 sq ft



First Floor



Ground Floor

Illustration for identification purposes only, measurements are approximate, not to scale. Fourlabs.co © (ID1266877)