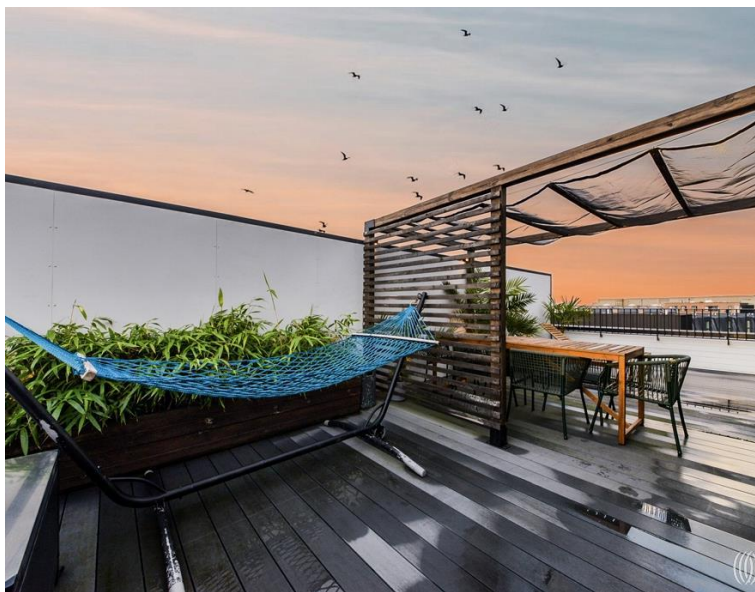
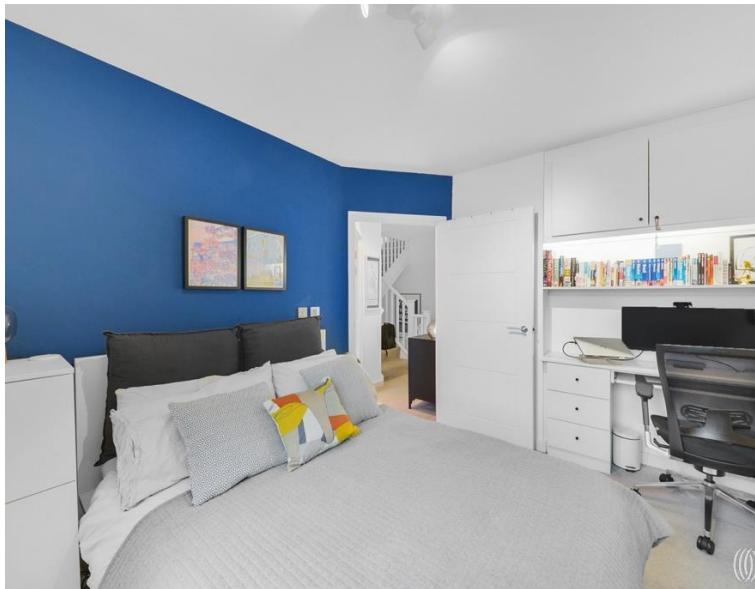


Derny Avenue, London E20
£900,000 Leasehold







Description

Situated in the vibrant heart of Stratford, this exceptional three-bedroom duplex apartment offers a sophisticated blend of contemporary living and outdoor luxury. The property benefits from a thoughtfully designed layout across two levels, creating distinct living and sleeping zones that maximize both space and privacy.

The standout feature of this home is undoubtedly the private roof terrace, offering panoramic views across the London skyline. This generous outdoor space provides the perfect setting for entertaining or quiet relaxation, a rare commodity in urban living that transforms the property into a true sanctuary above the bustling city below. The terrace extends the living space seamlessly, creating an indoor-outdoor lifestyle that defines modern metropolitan living.

Inside, the property showcases contemporary finishes throughout, with well-proportioned rooms that benefit from excellent natural light. The duplex arrangement ensures optimal separation between the social areas and private bedrooms, while the inclusion of two and a half bathrooms adds practical convenience for family living or entertaining guests.

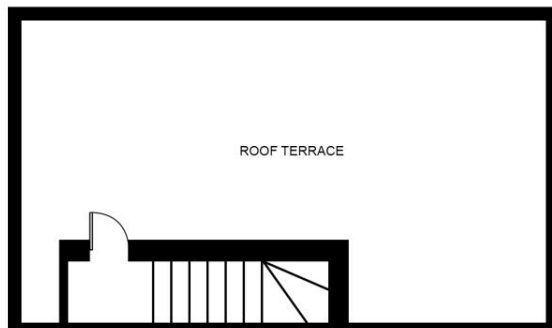
- Spacious three bedroom duplex
- Private roof terrace
- Panoramic city views
- Modern development
- Olympic Park proximity
- Excellent transport links
- Contemporary finishes
- Duplex living arrangement
- Investment opportunity

Floorplan

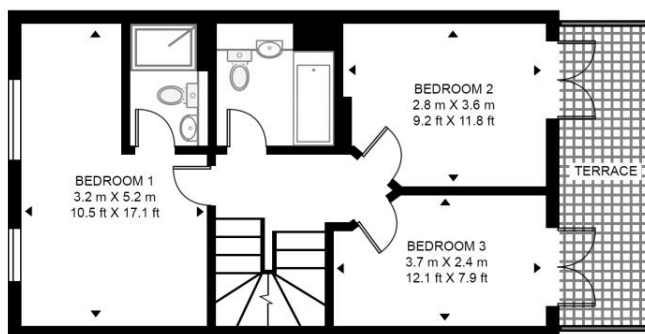
1,087 sq ft | 101 sq m

DERNY AVENUE

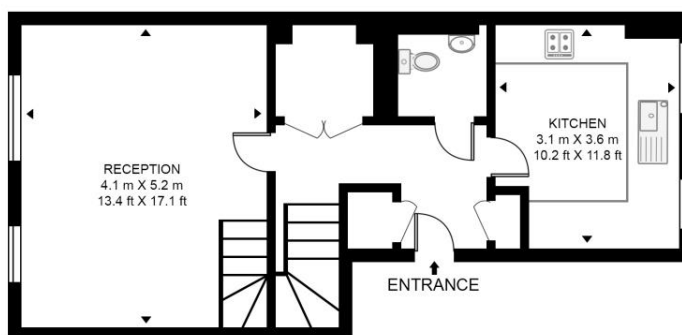
APPROXIMATE GROSS INTERNAL FLOOR AREA 1087 SQ.FT (101 SQ.M)



FOURTH FLOOR



THIRD FLOOR



SECOND FLOOR



HDVA

This floor plan has been defined by the RICS Code of Measurement. This floor plan and all others are for approximate representative purposes only and upon usage is agreed to as such by the client.

WWW: hdvirtualart.com | TEL: 0203.974.1567 | EMAIL: info@hdvirtualart.com

Stratford

5 Station Street,
London E15 1DA
+4420 3147 1500

Lettingsstratford@eu.jll.com

Urban living, your way.

jll.co.uk/residential

© 2019 Jones Lang LaSalle IP, Inc. All rights reserved. All information contained herein is from sources deemed reliable; however, no representation or warranty is made to the accuracy thereof.

