

## Swallow Street, London W1B

Price £1,350 per week - Furnished









# Description

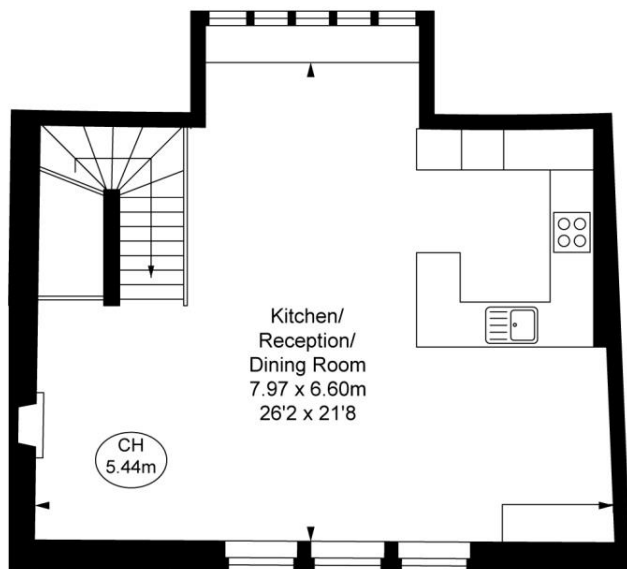
A stunning duplex apartment arranged over the fifth and sixth floor of this grade II listed building in Piccadilly Circus. The property consists of a master bedroom with en suite bathroom, one further bedroom, family bathroom, reception room and fully fitted open plan kitchen. Swallow street is in the heart of Piccadilly Circus and therefore benefits from all the shopping and transport facilities of this vibrant area.

Council tax band: H. Rent is payable on a monthly basis and you may be required to pay more than a month's rent in advance, depending on your circumstances. You will be required to pay a 1 week holding deposit following a successful offer. Tenancies with annual rents up to £50,000 will require a 5 weeks' security deposit, while those exceeding this threshold will require a 6 weeks' deposit. Utility bills, council tax, telephone line and broadband are not included in the rent. As well as paying the rent, you may also be required to make some additional permitted payments. If your tenancy does not qualify as an AST, additional fees may apply. Please visit [jll.co.uk/fees](http://jll.co.uk/fees) for details of fees that may be payable when renting a property. To check broadband and mobile phone coverage please visit Ofcom here [ofcom.org.uk/phones-telecoms-and-internet/advice-for-consumers/advice/ofcom-checker](http://ofcom.org.uk/phones-telecoms-and-internet/advice-for-consumers/advice/ofcom-checker)

- Duplex apartment
- Master bedroom with en suite bathroom
- One further bedroom
- Family bathroom
- Reception room
- Open plan kitchen
- Furnished

# Floorplan

1,159 sq ft | 108 sq m

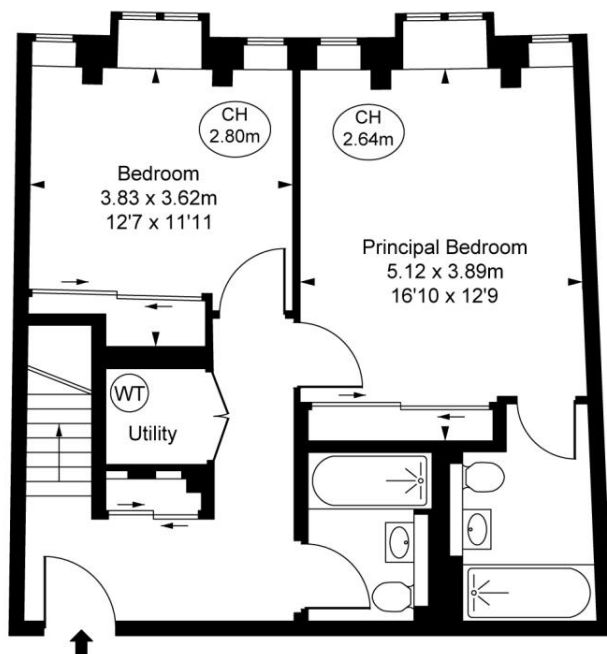


Swallow Street, W1B  
Approximate Gross Internal Area  
107.65 sq m / 1,159 sq ft

( CH = Ceiling Heights )



Sixth Floor  
Approximate Gross Internal Area  
49.16 sq m / 529 sq ft



Fifth Floor  
Approximate Gross Internal Area  
58.49 sq m / 630 sq ft

This plan is not to scale. It is for guidance and not for valuation purposes.  
All measurements and areas are approximate only, and have been prepared in accordance with the current edition of the RICS Code of Measuring Practice.  
© Fulham Performance

Mayfair and Marylebone  
St George Street,  
London W1S 2FQ  
+44 207 399 5550  
mayfair@jll.com

*Urban living, your way.*

[jll.co.uk/residential](http://jll.co.uk/residential)

© 2019 Jones Lang LaSalle IP, Inc. All rights reserved. All information contained herein is from sources deemed reliable; however, no representation or warranty is made to the accuracy thereof.

