



Homerton Road, London E9
£335,000 Leasehold







Description

Situated along the picturesque Regent's Canal in the heart of Hackney, this impressive apartment forms part of Matchmakers Wharf, a distinguished waterside development that has become synonymous with contemporary canal-side living. The building's modern architecture complements the historic industrial heritage of the area, creating a striking presence along this much-coveted stretch of the canal network.

This thoughtfully designed one-bedroom apartment maximises both space and natural light, with elevated positioning ensuring abundant sunshine throughout the day. The entrance hall features generous storage solutions, while the double bedroom benefits from built-in wardrobes that maintain the clean, uncluttered aesthetic. The family bathroom suite provides contemporary fixtures and fittings that reflect the development's quality standards.

The heart of the home lies in the impressive open-plan living area, where the fully integrated kitchen seamlessly flows into the spacious reception room. This sociable layout extends onto the south-easterly facing balcony, where residents can enjoy sweeping panoramic views over the Regent's Canal and the expansive green spaces of Hackney Marshes beyond.

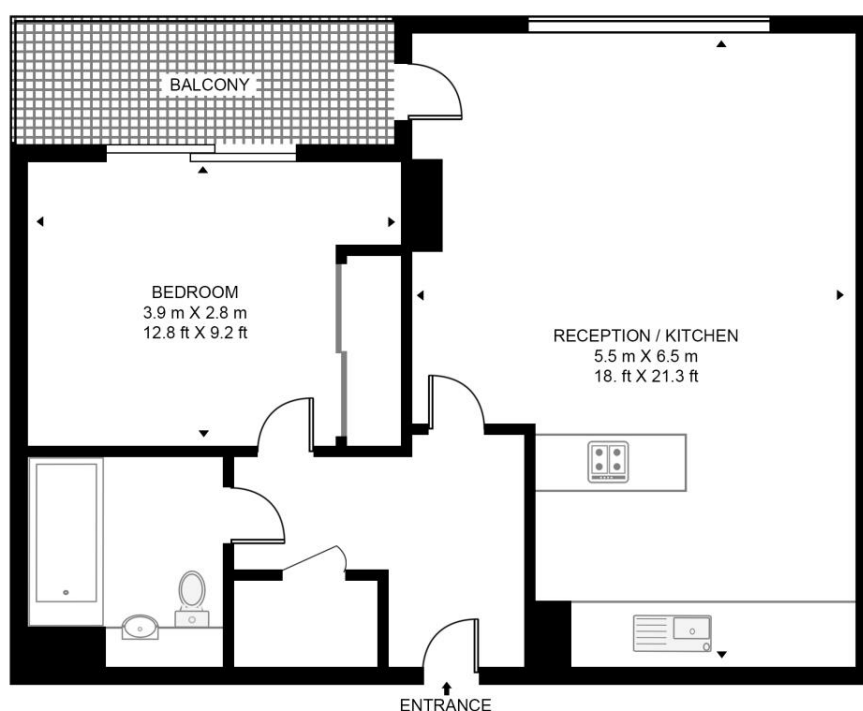
- One bedroom apartment
- Canalside development
- 10th Floor
- South-Easterly views
- Large balcony with panoramic views
- Approx. 582 sq. ft (54.1 sq. m)
- Residents' Gym
- Communal roof terrace
- Concierge
- EPC Rating B

Floorplan

582 sq ft | 54 sq m

SKY APARTMENTS, HOMERTON ROAD

APPROXIMATE GROSS INTERNAL FLOOR AREA 582 SQ.FT (54.1 SQ.M)



TENTH FLOOR



This floor plan has been defined by the RICS Code of Measurement. This floor plan and all others are for approximate representative purposes only and upon usage is agreed to as such by the client.
WWW: hdvirtualart.com | TEL: 0203.974.1567 | EMAIL: info@hdvirtualart.com

Stratford
5 Station Street,
London E15 1DA
+4420 3147 1500
Lettingsstratford@eu.jll.com

Urban living, your way.

jll.co.uk/residential

© 2019 Jones Lang LaSalle IP, Inc. All rights reserved. All information contained herein is from sources deemed reliable; however, no representation or warranty is made to the accuracy thereof.

