



Forrester Way, London E15
£850,000 Leasehold







Description

Set within the prestigious New Garden Quarter development in Stratford, this exceptional three-bedroom apartment exemplifies contemporary London living at its finest. The development's thoughtful design and comprehensive amenities create a sophisticated residential community that seamlessly blends luxury with everyday convenience.

This impressive split-level apartment spans 1,164 square feet of beautifully appointed internal space, crowned by a remarkable 728 square foot south-facing private terrace that transforms outdoor living into a daily pleasure. The generous proportions and intelligent layout create an immediate sense of space and light throughout, while integrated air conditioning ensures year-round comfort regardless of the season.

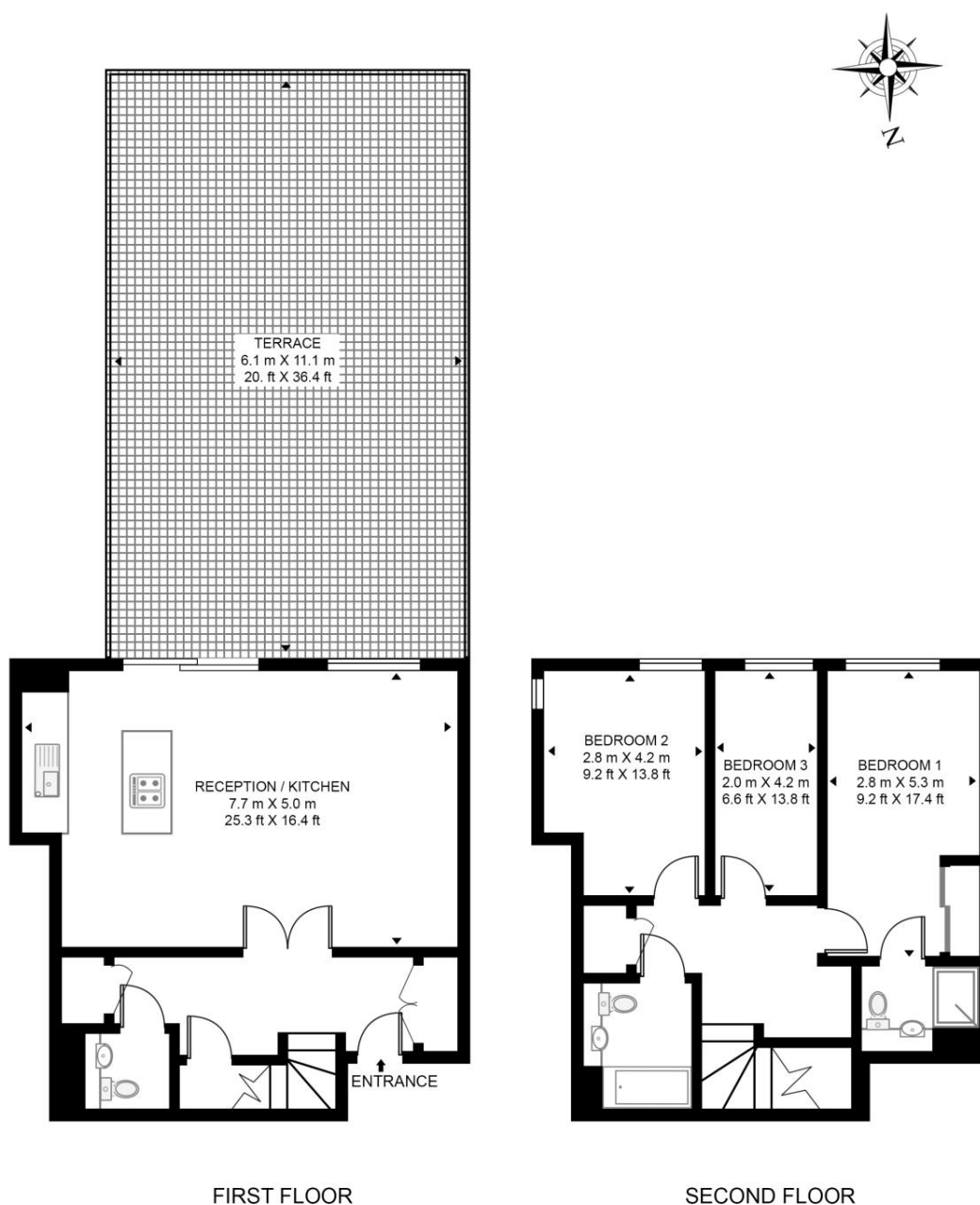
The ground floor welcomes you through a spacious entrance hall featuring convenient guest facilities and thoughtfully integrated storage solutions. The heart of the home reveals itself in a magnificent 25-foot living space where contemporary design meets functional elegance. The fully integrated kitchen showcases premium appliances and modern finishes, creating a natural gathering point that flows seamlessly onto the stunning private terrace.

- Three bedrooms
- Two bathrooms (one en-suite) + Guest WC
- South facing private terrace
- Air conditioning
- Residents' gym
- 24hr Concierge service
- Private underground parking
- Landscaped gardens
- Approx. 1164 sq. ft (108. 2 sq. m)

Floorplan

1,164 sq ft | 108 sq m

LANGHAM HOUSE, NEW GARDEN QUARTER APPROXIMATE GROSS INTERNAL FLOOR AREA 1164 SQ.FT (108.2 SQ.M)



This floor plan has been defined by the RICS Code of Measurement. This floor plan and all others are for approximate representative purposes only and upon usage is agreed to as such by the client.

WWW: hdvirtualart.com | TEL: 0203.974.1567 | EMAIL: info@hdvirtualart.com

Stratford
5 Station Street,
London E15 1DA
+4420 3147 1500
Lettingsstratford@eu.jll.com

Urban living, your way.

jll.co.uk/residential

© 2019 Jones Lang LaSalle IP, Inc. All rights reserved. All information contained herein is from sources deemed reliable; however, no representation or warranty is made to the accuracy thereof.

