



Casson Square, London SE1

Price £895 per week - Furnished







Description

A 23rd floor 1 bedroom apartment in the stunning 8 Casson Square, a luxury development moments from Waterloo Station, SE1.

Offered fully furnished, this luxury 1 bedroom apartment is situated on the 23rd floor and comprises large double bedroom with fully fitted wardrobes, spacious living area with a fully fitted open plan kitchen to include Miele and Siemens appliances, winter garden with spectacular views towards The Shard, contemporary bathroom, wood flooring and excellent storage space. The property has a high specification throughout featuring comfort cooling, underfloor heating and smart home technology.

The development benefits from top of the range amenities which include an on-site gym, swimming pool with spa, exclusive resident's lounge and 24-hour concierge. 8 Casson Square is in the heart of Southbank and on the doorstep of Waterloo Station (0.2 miles) and moments from the iconic London Eye. The City of London is within easy reach as is London's famous West End.

Nestled within a characterful mews in the heart of Marylebone, this three-bedroom house offers a rare opportunity to experience London living at its most distinguished. The cobbled street setting provides a peaceful residential sanctuary while remaining perfectly positioned between the cultural richness of Fitzrovia and the elegance of Marylebone Village.

This substantial property combines the charm of its mews heritage with practical modern living across well-proportioned accommodation. The three bedrooms are complemented by two bathrooms, while generous storage throughout ensures the home remains uncluttered and serene. The mews setting naturally provides an intimate sense of community while maintaining privacy and tranquillity.

The location epitomises central London convenience, with Bond Street and Oxford Circus stations providing exceptional transport links across the capital. The world-renowned shopping of Oxford Street lies moments away, while the green expanses of Regent's Park offer immediate escape from urban intensity. The proximity to Harley Street adds to the area's prestigious character, while Marylebone High Street provides boutique shopping and distinguished dining options.

This mews house perfectly suits tenants seeking flexible London living with character and distinction. The combination of historic charm, practical accommodation, and unrivalled location creates an ideal base for experiencing the best of central London life.

Council tax band: H. Rent is payable on a monthly basis and you may be required to pay more than a month's rent in advance, depending on your circumstances. You will be required to pay a 1 week holding deposit following a successful offer. Tenancies with annual rents up to £50,000 will require a 5 weeks' security deposit, while those exceeding this threshold will require a 6 weeks' deposit. Utility bills, council tax, telephone line and broadband are not included in the rent. As well as paying the rent, you may also be required to make some additional permitted payments. If your tenancy does not qualify as an AST, additional fees may apply. PI

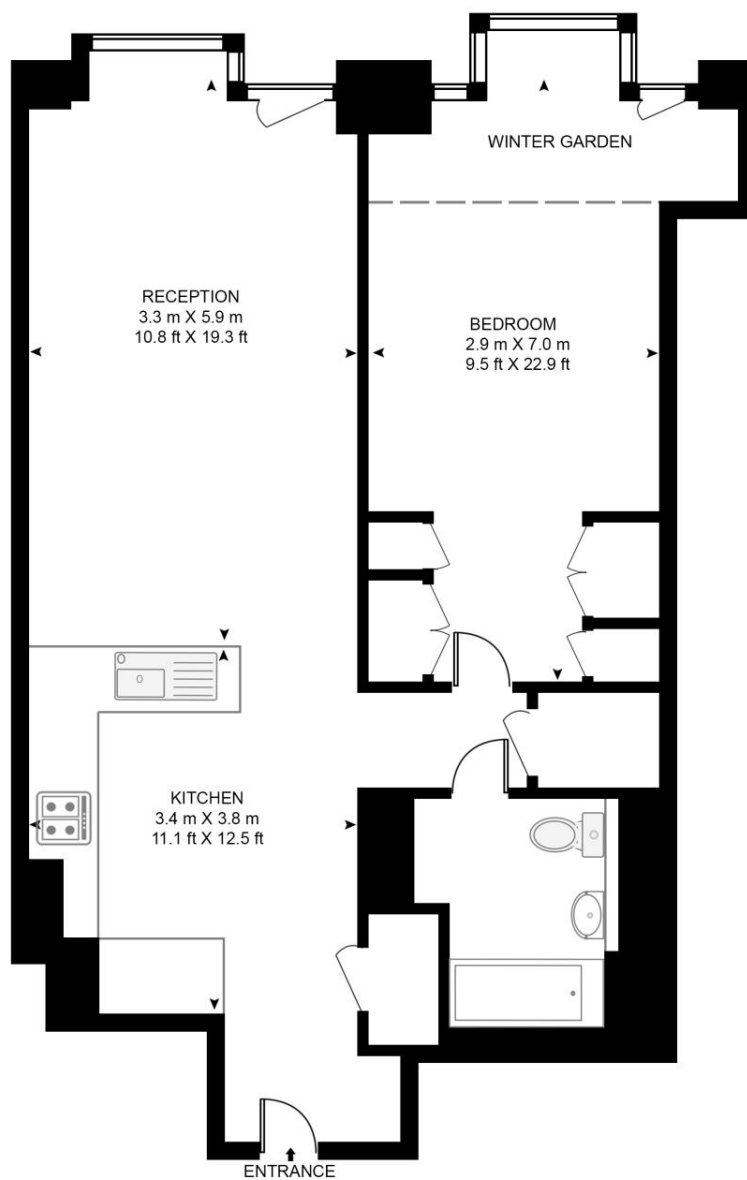
- 1 Bedroom
- 1 Bathroom
- 23rd Floor
- Winter Garden
- Luxury fitted kitchen with Miele appliances
- 24 hour concierge
- Approx. 711 sq ft (66.1 sq m)
- 0.2 mile from Waterloo Station
- Luxury residents facilities
- Furnished

Floorplan

711 sq ft | 66 sq m

CASSON SQUARE

APPROXIMATE GROSS INTERNAL FLOOR AREA 711 SQ.FT (66.1 SQ.M)



TWENTY THIRD FLOOR

HDVA

This floor plan has been defined by the RICS Code of Measurement. This floor plan and all others are for approximate representative purposes only and upon usage is agreed to as such by the client.

WWW: hdvirtualart.com | TEL: 0203.974.1567 | EMAIL: info@hdvirtualart.com

City
25 Walbrook The Walbrook
Building,
London EC4N 8AF
+4420 7337 4000

Urban living, your way.

jll.co.uk/residential

© 2019 Jones Lang LaSalle IP, Inc. All rights reserved. All information contained herein is from sources deemed reliable; however, no representation or warranty is made to the accuracy thereof.

