



Wyndham Apartments, 65 River Gardens Walk, Greenwich SE10 0TZ

Wyndham Apartments, Greenwich SE10

Leasehold (983 years remaining)

This truly stunning apartment has views reaching across to the river Thames and Canary Wharf. The property is just a short river walk to the Cutty Sark DLR and local shops, restaurants, bars and historical Royal Greenwich park.

Key Features

- 2 Double bedrooms, 2 Bathrooms
- Light and spacious
- Private balcony
- Council Tax: **E**
- Service Charge: **£5,000 P/A**
- Ground Rent: **£400 P/A**
- Chain Free
- EPC: **B**

Boasting a generous 893 sq. ft. of internal living space, this spacious 3rd floor apartment is perfect for first time buyers and downsizers alike. Benefitting from a secure underground parking space and a storage cage, together with the added bonus of a 24-hour concierge, as well as access to a residents only gym, swimming pool and tennis courts.

The accommodation comprises; a welcoming entrance hallway with two storage cupboards and doors leading to all rooms. The reception room is a generous size at 21'6 x 13'1 and has been tastefully decorated in neutral tones. The kitchen has been thoughtfully arranged with an array of eye and base level units, integrated appliances and finished with high-quality, stone worksurfaces. The main bedroom has a built-in wardrobe and leads to a four-piece en-suite complete with toilet, hand basin, separate shower cubicle and bathtub. The second bedroom is also a good sized double room. Completing the flat is the family shower room laid out with toilet, hand basin and large walk-in shower. The balcony is accessed from the reception room, offering fantastic views over the river and Canary Wharf.









Wyndham Apartments

Approximate Gross Internal Area = 83.0 sq m / 893 sq ft

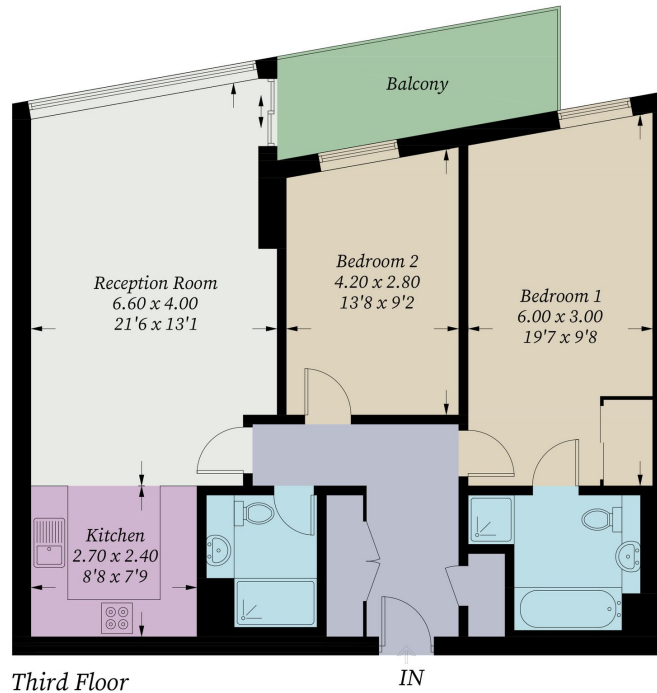


Illustration for identification purposes only, measurements are approximate,
not to scale. Fourlabs.co © (ID1269074)