

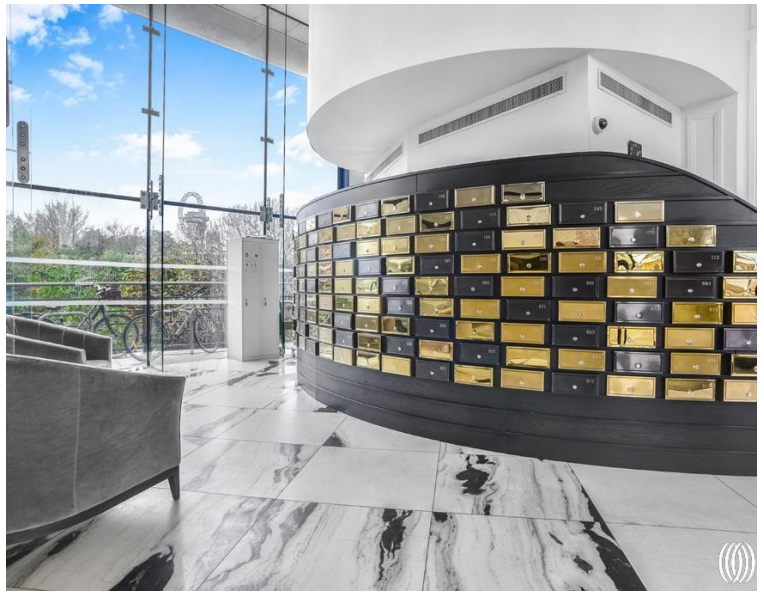
# High Street, London E15

£345,000 Leasehold









## Description

Situated in the heart of Stratford's dynamic regeneration zone, this sophisticated one-bedroom apartment occupies a prime position within the sought-after River Heights development. The contemporary building exemplifies modern urban living, offering residents an elevated lifestyle enhanced by premium amenities and stunning vistas towards London's financial district.

The thoughtfully designed interior showcases contemporary finishes throughout, beginning with a welcoming entrance hall featuring generous built-in storage solutions. The principal accommodation flows seamlessly from a sleek, fully integrated kitchen into an expansive living area, creating an ideal space for both relaxation and entertaining. Floor-to-ceiling windows flood the apartment with natural light while providing direct access to the private balcony, where residents can enjoy uninterrupted south-easterly views stretching towards the iconic Canary Wharf skyline.

The well-proportioned double bedroom features practical built-in storage, maximising the efficient use of space, while the contemporary bathroom suite completes the accommodation with modern fixtures and quality tiling.

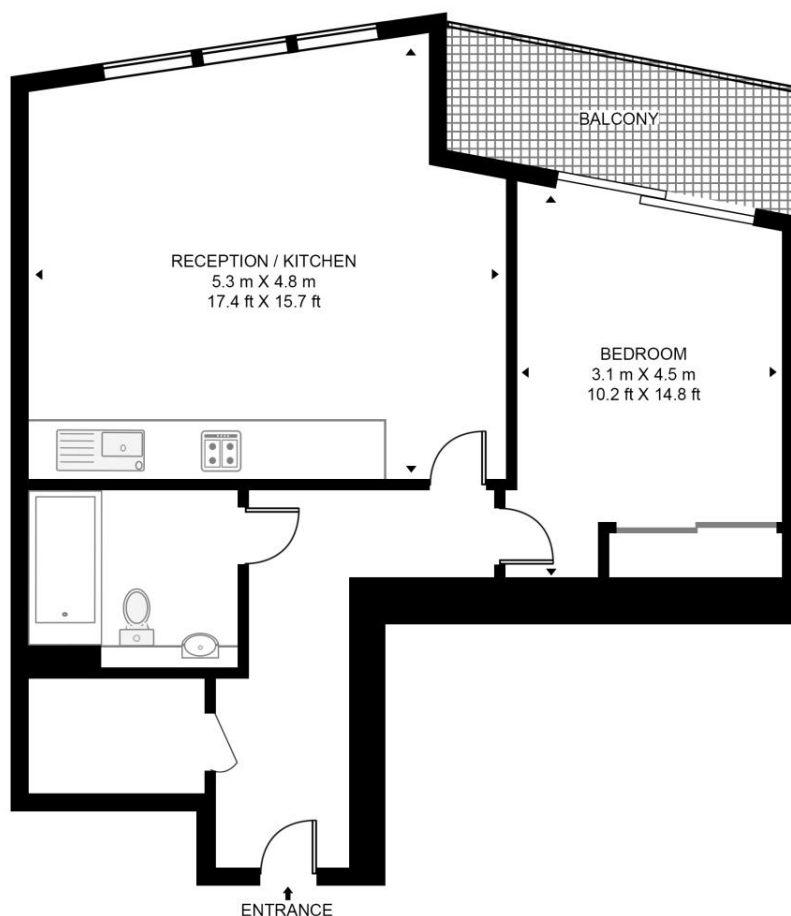
- One bedroom apartment
- Private balcony
- Residents' gym
- 24hr Concierge
- 10th Floor
- Approx. 549 sq. ft (51 sq. m)
- EPC Rating B

# Floorplan

549 sq ft | 51 sq m

## RIVER HEIGHTS, HIGH STREET

APPROXIMATE GROSS INTERNAL FLOOR AREA 549 SQ.FT (51 SQ.M)



TENTH FLOOR



This floor plan has been defined by the RICS Code of Measurement. This floor plan and all others are for approximate representative purposes only and upon usage is agreed to as such by the client.

WWW: [hdvirtualart.com](http://hdvirtualart.com) | TEL: 0203.974.1567 | EMAIL: [info@hdvirtualart.com](mailto:info@hdvirtualart.com)

Stratford  
5 Station Street,  
London E15 1DA  
+4420 3147 1500  
[Lettingsstratford@eu.jll.com](mailto:Lettingsstratford@eu.jll.com)

*Urban living, your way.*

[jll.co.uk/residential](http://jll.co.uk/residential)

© 2019 Jones Lang LaSalle IP, Inc. All rights reserved. All information contained herein is from sources deemed reliable; however, no representation or warranty is made to the accuracy thereof.

