



Ossel Court, 13 Telegraph Avenue, Greenwich SE10 0TE



# Ossel Court, Greenwich SE10

Leasehold (988 years remaining)

This exceptional apartment offers a rare opportunity to acquire a beautifully maintained home in the prestigious riverside development of Enderby Wharf, Greenwich. with residents gym and 24-hour concierge services.

## Key Features

- One Bedroom, One Bathroom
- Large private patio garden
- Light and spacious
- Council Tax: **B**
- Service Charge: **£2,497.75**
- Ground Rent: **£460.46**
- Excellent transport links
- EPC: **B**

Positioned within a secure, quiet residential setting with the waterfront quite literally on your doorstep, the development combines tranquillity with outstanding convenience. Residents benefit from a friendly 24-hour concierge service, professionally equipped gym, and an RTM (Right to Manage) structure, contributing to notably competitive service charges. Enderby Wharf is uniquely positioned in Greenwich, with two supermarkets moments away, and within a short walk of Greenwich Park, Cutty Sark, Odeon cinema, and IKEA.

Connectivity is a key strength of this location, with excellent transport links providing direct access to London Bridge in approximately 12 minutes, Canary Wharf in around 15 minutes, and Bank and Charing Cross within 30 minutes, making it ideal for City and Canary Wharf professionals.

Internally, the flat offers a bright, thoughtfully designed living space finished to a high standard, complemented by one of the largest terraces available. This generous private outdoor space provides an excellent setting for relaxing and entertaining.













## Ossel Court, SE10

Approximate Gross Internal Area = 49.8 sq m / 536 sq ft

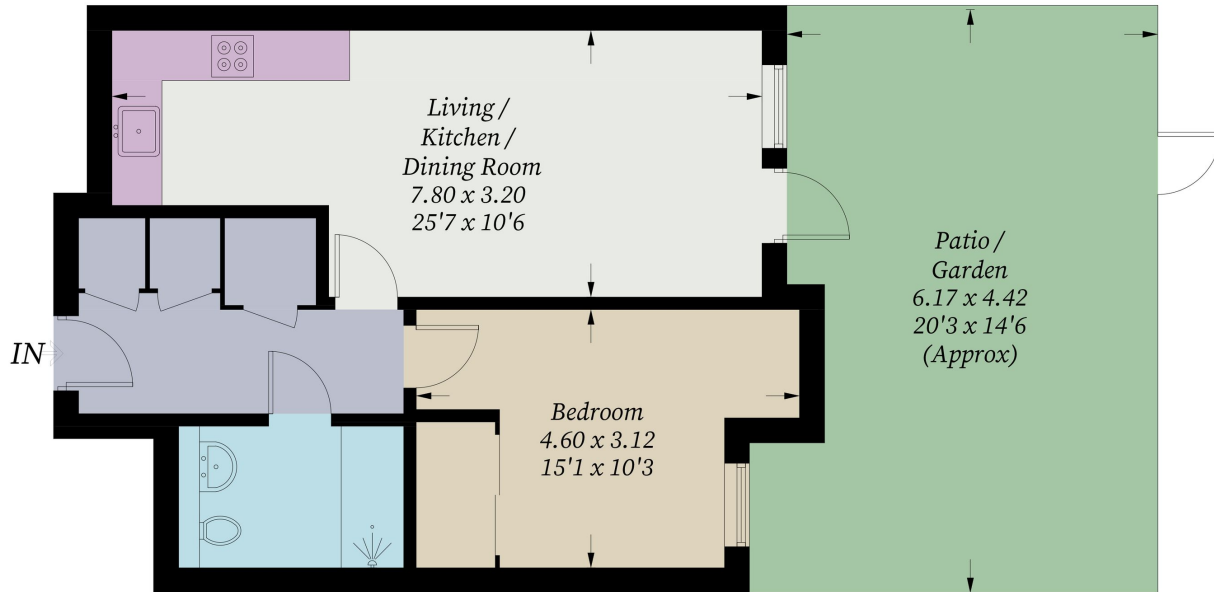


Illustration for identification purposes only, measurements are approximate, not to scale. Fourlabs.co © (ID1273043)